

**AD DEADLINE:**  
Noon  
Wednesday, January 19th

MAILING ADDRESS:  
232 E JOHNSON ST.  
WOLF POINT, MT 59201

CALL: 406-653-3344  
FAX: 888-624-1925  
EMAIL:  
freetrader@nemont.net



# TRADER

Connecting Buyers & Sellers

NOW ONLINE Go to [freetradermt.com](http://freetradermt.com)

PSRT STD  
U.S. POSTAGE PAID  
BOZEMAN, MT  
PERMIT NO. 120  
ECRWSS

**POSTAL  
CUSTOMER  
LOCAL**

The **FREE TRADER** Published Bi-Monthly Is Mailed & Distributed **FREE** from  
Malta to Bainville and the Canadian Line to Circle, Montana

Vol. 35 No. 1

Connecting Buyers & Sellers For Over 35 Years

January 12th, 2022

## FOR SALE!

### GREAT BUSINESS WOLF POINT LIQUOR MARKET LLC

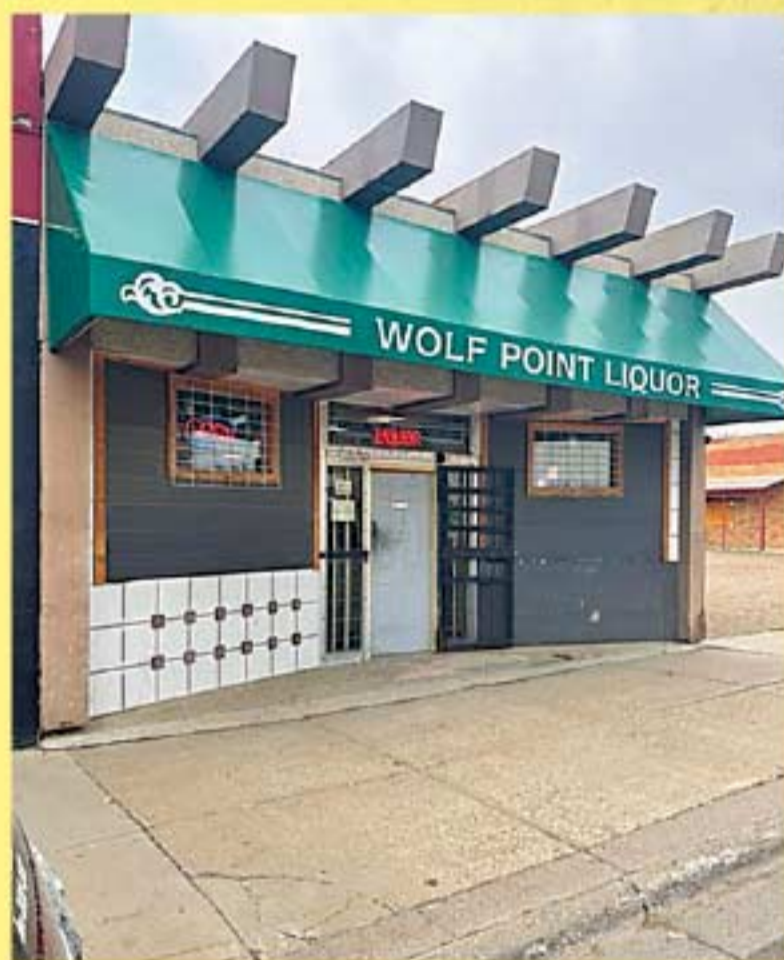
This is a great business opportunity located in Downtown Wolf Point. They have a large clientele and the business has an impressive annual revenue.

**223 MAIN ST. WOLF POINT, MT**

- Built 1949
- 1875 Sq. Ft
- Forced air heating with central air
- Brick, metal, and hardboard siding
- Commercial roof
- Sale includes building and fixtures
- Includes contract with Montana State Liquor Board as an approved buyer

**\$990,000**

CALL JAMES 406-650-7840



## WANTED

**NOW IS THE TIME OF YEAR  
FOR REAL ESTATE OPPORTUNITIES.**

- RESIDENTIAL LISTINGS
- RECREATIONAL LISTINGS
- FARM & RANCH LISTINGS

**WE ARE IN CONTACT WITH PROSPECTIVE BUYERS!**

**CALL US TODAY!**



## AGLAND REALTY

406-653-1377

## Northern Prairie Auto Sales

CHRYSLER DODGE Jeep RAM

HAPPY  
*new year*

START SOMETHING NEW  
SALES EVENT



### 2022 JEEP WAGONEER

Elevating every aspect of the family road trip, offering an incredible combination of versatile space, inviting comfort, legendary capability and confident towing. Plus, a suite of standard and available advanced safety and security features and an outstanding towing capacity help give you maximum confidence.

*Time for a new vehicle?*  
**Your Vehicle YOUR WAY!**

Order the exact features and options that you want. Pre-orders are being built right now! Call or come see us today!



**CERTIFIED PRE-OWNED**



CASH NO TRADE PRICE REFLECTED ON CPOV INVENTORY

### 2020 RAM 1500 REBEL



DRIVE AWAY  
PRICE  
\$56,800

Remote, nav, brake control, Allow wheels

### 2019 RAM 1500 LARAMIE



DRIVE AWAY  
PRICE  
\$51,250

Remote, heated/vented bucket seats, 65K

2020 RAM 1500 Rebel, remote, nav, brake control, Allow wheels.....\$56,800  
2020 Chrysler Pacifica Touring, heated leather, remote, blind spot, 64K..\$29,700  
2019 RAM 1500 Laramie, remote, heated/vented bucket seats, 65K.....\$51,250  
2018 Jeep Compass Trailhawk, power doors, leather, back up, 60K.....SOLD  
2018 Jeep Grand Cherokee Limited, full glass top, nav, remote, 40K....\$39,500  
2017 RAM 1500 Bighorn, heated seats & steering, nav, remote, 63K.....\$37,500

\*Drive Away Price reflects applicable manufacturer Capital/trade/rebates. Listed prices are subject to change without notification. Drive Away Price includes customer cash for qualifying buyers only. Not all vehicles equipped the same. Rebates depend on model and approved credit. See dealer for details. Call for special rebate/APR Combos, not all apply. Incentives expire 01/31/2022. See dealer for new incentives effective 02/01/2022.

Call Jack, Jason or Erin today!

**[www.northernprairieauto.com](http://www.northernprairieauto.com)**

100 Hwy 2 East, Wolf Point, MT 59201 • (406)653-1160  
Monday through Friday 8am-5pm • Saturday 8am-12pm

LOOK FOR YOUR NEXT **FREE TRADER** **January 26th, 2022**  
Connecting Buyers & Sellers



**MERIDIAN AUGER MOVERS** are built strong, stable and versatile. Designed for conventional augers, our four-wheel movers have been engineered to fit between most above-ground hopper legs. With no undercarriage that connects the walking beams to the auger axle, the operator is allowed unrestricted movement around and underneath the auger. In addition, the mover wheels are

set on independent walking beams for increased stability as high-quality gear pumps, attached to a universal mounting bracket, supply hydraulic power to the system. Our unique design helps the operator because, no matter how high or low the auger is, the controls are always at waist level, right in front of you.

**INVENTORY ON ORDER!**  
**Expected to arrive Mid-February!**

**8' x 39' MERIDIAN AUGERS** with 26.5 HP EFI Kohler engine, cold weather muffler, Meridian Mover, electric clutch, reversing gear box, light package, shovel kit, spring belt tensioner .....**Retail \$25,345 NTP \$19,000**

**8' x 46' MERIDIAN AUGERS** with 26.5 HP EFI Kohler engine, cold weather muffler, Meridian Mover, electric clutch, reversing gear box, light package, shovel kit, spring belt tensioner .....**TEMPORARILY OUT OF STOCK**

**10' x 39' MERIDIAN AUGERS** with 38 HP EFI Kohler engine, cold weather muffler, Meridian Mover, electric clutch, reversing gear box, light package, shovel kit, spring belt tensioner .....**Retail \$28,925 NTP \$21,700**

**10' x 46' MERIDIAN AUGERS** with 38 HP EFI Kohler engine, cold weather muffler, Meridian Mover, electric clutch, reversing gear box, light package, shovel kit, spring belt tensioner .....**TEMPORARILY OUT OF STOCK**

**Optional Bin Sweep Plumbing Kit** to above augers, c/w motor, flow control valve, hose, swivel bracket, weld in spider and mounting peg installed..... **add \$1,200**

**HARVEST**   
by **MERIDIAN**

**FC1545 Conveyors**



**ONLY 2 LEFT IN STOCK**  
**with movers & 26.5 hp**  
**EFI Kohler Engines**

**Cash, No Trade Price \$25,000 - While They Last**

**UPDATED Website - Continuously adding**  
**New and Used In Stock Inventory.**  
**Check it out today!**



Anything To Do With Grain,  
We Handle It

**406-487-2216**  
email: sales@shortlineag.com  
website: www.shortlineag.com  
Box 1177 • Scobey, Montana 59263



**MERIDIAN**  
Authorized Dealer



**Being  
there  
is why  
I'm here.**

**Nathan M Lee, Agent**  
98 US Hwy 2 East  
Glasgow, MT 59230  
406-228-4329  
nathan.lee.tfti@statefarm.com

Whether you need a question answered, a problem solved, or a claim reported, my job is to make it happen.

**Like a good neighbor,  
State Farm is there.®**

CALL ME TODAY.

 **State Farm™**

State Farm, Home Office, Bloomington, IL  
P097193.1

**LOOKING FOR:** 1070 Case Tractor; **FOR SALE:** 23.1 x 30 – Brand new Titan Tires & Tube. Call 406-786-7543. 1o

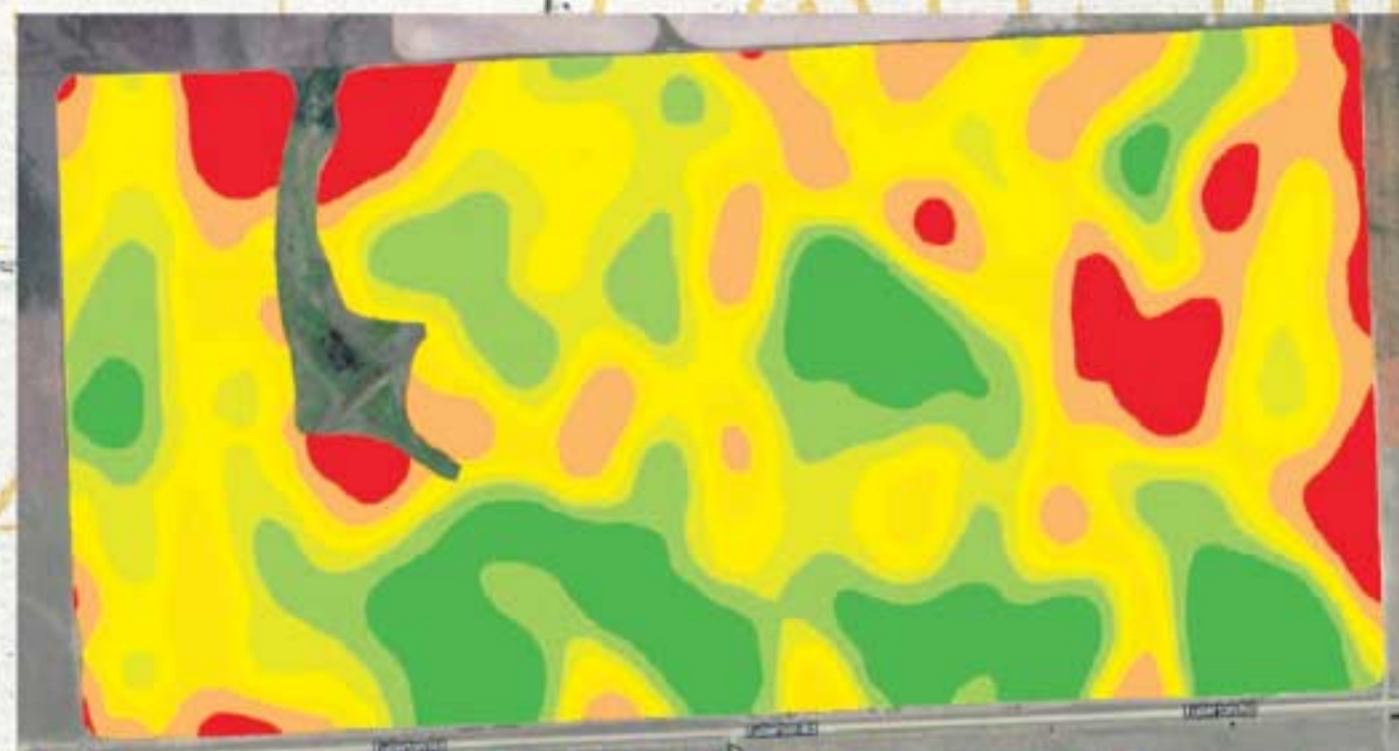
**Prayer to St. Jude** Precious St. Jude, precious Mother, and Sacred Heart of Jesus be praised, adored and glorified throughout the world forever. Amen. Say three times a day for nine days and promise publication and your prayers will be answered, no matter how impossible, before the ninth day. Thank you, St. Jude, for prayers answered.



**Agricultural Data  
Analysis & Precision  
Ag Services**

Years of yield data just sitting in your combine...

Put that data to work with Variable Rate Application Maps to manage all your inputs.



At Dragonfly Precision, we combine your knowledge with precision ag technology to get the most out every acre.

Tieg Tarum  
Ph: (406) 551 - 4679  
info@dragonflyprecision.com



We will be closed in observance of

**Martin Luther King, Jr. Day**

**Monday,  
January 17th** **I HAVE A  
Dream**

**ATM LOCATION**

Credit Union Lobby • Open 24 hrs, 7 days a week

**LET'S GET YOU MOVING IN YOUR  
NEW CAR, TRUCK OR ATV.**



217 - 3rd Ave.S.,  
Wolf Point, MT  
406-653-2880



**Call us today!**



# HIGH PLAINS MOTORS

WOLF POINT, MONTANA

**JAMES SAYS,**  
**"2022 IS HERE! STOP IN & GET**  
**YOUR NEW OR PRE-OWNED RIDE**  
**FROM HIGH PLAINS MOTORS.**  
**HAVE A GREAT 2022!"**



**JAMES JOHNSON**

**NEW INVENTORY • NEW INVENTORY • NEW INVENTORY • NEW INVENTORY • NEW INVENTORY • NEW INVENTORY**



**2022 CHEVY CAMARO**

VIVID ORANGE, 2SS, 6.8L, MAGNETIC RIDE CONTROL, CARBON FLASH WHEELS, #103850  
**IN STOCK NOW!**



**2021 GMC K1500**

CARDINAL RED, AT4, CREW, 5.3L, DURATRAC WITH 18" WHEELS. #467877  
**STOP IN & SEE TIM!**



**2022 CHEVY K1500**

SATIN STEEL, CREW, LTZ, 3.0L, DURAMAX, TECH PKG., Z71. #134926  
**JUST IN!**



**2022 CHEVY K1500 LIMITED**

IRIDESCENT PEARL, STANDARD BOX, LTZ, SUNROOF, Z71, 5.3L. #162638  
**ARRIVING SOON! CALL DUSTIN**



**2022 CHEVY BLAZER**

BLACK, LT, AWD, BLACK WHEELS, BLACK OUT, 2.0L TURBO. #112432  
**HERE! CALL TIM.**



**2022 CHEVY COLORADO**

SATIN STEEL, CREW, LONG BOX, Z71, 4X4, 3.6 V6, LEATHER. #133678  
**ARRIVING SOON!**



**2021 CHEVY K1500**

SILVER ICE, CREW, LTZ, 6.2L, SHORT BOX, Z71, SUNROOF. #458141  
**CALL DUSTIN OR STOP IN.**



**2021 GMC K1500 LIMITED**

SATIN STEEL, AT4, DURAMAX, STANDARD BOX, 18" WHEELS. #458979  
**ARRIVING SOON! CALL TIM TO RESERVE IT!**

**NEW INVENTORY • NEW INVENTORY • NEW INVENTORY • NEW INVENTORY • NEW INVENTORY • NEW INVENTORY**



**2019 GMC 3500 HD**

SUMMIT WHITE, SLT, CREW, LONG BOX, DURAMAX, 45,500 MILES. #261877  
**GMC CERTIFIED PRICE \$66,999**



**2019 K3500 DRW**

DEEP OCEAN BLUE, HIGH COUNTRY, DURAMAX, 4X4. #105219  
**HPM PRICE \$64,500**



**2015 CHEVY 3500HD**

DEEP OCEAN BLUE, CREW, DURAMAX, HIGH COUNTRY, LONG BOX. #637834  
**NADA \$53,975 HPM \$50,000**



**2015 GMC K2500**

SONOMA RED, CREW, SLT, 6.0L, 4X4. #105058  
**FRESH TRADE \$37,500**



**2013 CHEVY K1500**

BLACK, LT, CREW, SHORT BOX, 5.3L, 4X4. #160116  
**NADA \$25,575 HPM PRICE \$23,900**



**2018 CHEVY K1500**

CENTENNIAL BLUE, LTZ, 6.7L, CREW, CENTENNIAL EDITION, SHORT BOX, LIMITED EDITION. #285356  
**CERTIFIED PRICE \$46,699**



**2017 CHEVY K1500**

SILVER ICE, CREW, LTZ, 5.3L, STANDARD BOX. #355884  
**NADA \$39,700 HPM PRICE \$28,800**



**2015 CHEVY K1500**

RAINFORREST GREEN, LT, STANDARD BOX, 5.3L, 4X4. #123577  
**NADA \$34,600 HPM PRICE \$32,000**



**2019 DODGE GRAND CARAVAN**

GRAY, SE, 3.6L V6, FWD, 3RD ROW SEATING. #789676  
**NADA \$24,650 HPM PRICE \$23,500**



**2011 FORD F-150**

MAROON/SILVER, SUPERCAB, 4X4, XLT, 3.5 ECO BOOST. #D35448  
**HPM PRICE \$14,500**



**2019 GMC K1500**

QUICKSILVER, DOUBLE CAB, 4X4, 5.3L, SLE. #217382  
**CERTIFIED PRICE \$34,699**



**2020 FORD EXPLORER**

MAROON, XLT, 4WD, LEATHER, 2.3L. #C08170  
**NADA \$44,000 HPM PRICE \$41,900**



**2019 GMC YUKON XL**

SUMMIT WHITE, STL, 5.3L, MIDROW BUCKETS, 66,000 MILES. #261934  
**GMC CERTIFIED PRICE \$53,999**



**2017 FORD EXPEDITION EL**

WHITE, XLT, LEATHER HEATED, 88,500 MILES. #A70832  
**HPM PRICE \$30,900**



**2014 FORD EXPEDITION EL**

GREEN/TAN, KING RANCH, 5.4L, 4WD, MIDROW BUCKETS. #F44444  
**HPM PRICE \$16,000**

**CALL DUSTIN OR TIM TODAY**  
**FOR ANY PRE-OWNED**  
**VEHICLE QUESTIONS**  
**OR NEEDS!**

**CALL JAMES, DUSTIN OR TIM at 653-1310 or 1-800-733-1310**  
**CALL FAST EDDY at 650-8143**  
**ON THE WEB – HIGHPLAINSMOTORS.COM**

**SWAP SHOP**  
Antique & Vintage / Pawn, Buy & Consign

**LARGE ASSORTMENT**  
NEW & USED

**IN STOCK**  
AMMO IN STOCK

**GREAT SELECTION OF STAR QUILTS**

**BUY • SELL • CONSIGN • PAWN**  
Store Hours: Monday-Saturday • 9:00AM-5:30PM

**Main Street • Wolf Point**  
Call 653-1410

**NOW CARRYING A SELECTION OF NEW TVS, DVD PLAYERS, TABLETS, AND VIDEO GAMING ACCESSORIES FOR ALL PLATFORMS!**

**LARGE SELECTION OF LAPTOPS**

Enjoy Billings. And getting there, too.

Hop on a fast flight to Billings and enjoy all the city has to offer. Free parking, too.

Billings Logan International Airport

**\$29\*** each way

Havre Glasgow Wolf Point Sidney Glendive Billings

**Cape Air**  
Enjoy the ride.

capeair.com 800-CAPE-AIR

\*Including all taxes and fees. Fares are subject to availability and other conditions. Fares may change without notice, and are not guaranteed until ticketed.

**WANTED! FARM/RANCH PROPERTY**

We have buyers for farm and ranch properties from 160 acres and up.

**LONE PINE RANCH**

Located in McCone County, West of Vida, MT  
+/- 9300 total acres, all contiguous  
+/- 8380 acres deeded with about 486<sup>±</sup> and 11able and  
+/- 600 acres BLM  
Good water and fences  
Please call Jason for more details.  
★\$5,400,000★

The information provided herein was gathered from sources deemed reliable but is not guaranteed by the sellers or their agents. Prospective Buyers should verify information and inspect the property to their full satisfaction before making any offers to purchase said property.

**CALL US TODAY TO SEE HOW WE CAN HELP YOU WITH YOUR NEXT PROPERTY SALE!**

FOR MORE INFORMATION OR TO MAKE A PHYSICAL INSPECTION OF THE PROPERTY, CONTACT:  
Jason Dunham, Broker  
406-366-5588  
Kurt Guldberg, Agent  
406-647-4836  
montanalandauctions.com

**Montana**  
Land Brokers Co.

**FOR SALE:** 2014 Ford F-250 XLT, 6.2L, cloth seats, cab length bed steps, 72K miles, one owner! Call Jason 406-653-1160 c/o

**FOR SALE:** Yard Machine snow blower, 5 HP, 24", Electric Start, 6 forward, 2 reverse speeds. \$375; Like new light tire chains, 3 sided cab. Call 406-762-3277 1p

**FOR SALE:** Bred Hfirs Blk AI'd to Right Answer Red Hfirs AI'd to Conqueror to calve March 15th. Also Bull bred to start April 5. Call 406-650-8448 4p

**A WHOLE NEW YEAR IS HERE! HAPPY 2022!**

Markle's Warehouse has everything you need to make your house.....

HOME  
*sweet*  
HOME

**Open Monday - Friday 8:00 a.m. - 5:30 p.m.**

**MARKLE'S WAREHOUSE**  
FURNITURE • TELEVISIONS • APPLIANCES

1 BLOCK WEST of the UNDERPASS - GLASGOW, MT • (406) 228-4012  
Monday-Friday 8 a.m. - 5:30 p.m.

**WITTKOPP ANGUS**

**Thursday February 10, 2022**  
1:00 pm • Glasgow Stockyards • Glasgow, MT

**80 Registered Yearling Angus Bulls**  
Bulls wintered free until May 1st

**40 Commercial Yearling Angus Heifers**

**Reference Sires Include —**  
KB-Full Measure C40 • Barstow Bankroll B73  
Spring Cove Crossbow • MAR Innovation 251 • GAS Ashland  
Connealy Legendary 644L • Sitz Barricade 632F

**WIP-Ashland-1060**  
Birth Wt. 127 Wt. 85 815  
CED BW WW YW MILK SW SB +6 +1.5 +88 +159 +27 +88 +171

**WIP-Legendary-1084**  
Birth Wt. 127 Wt. 77 765  
CED BW WW YW MILK SW SB +11 -0.7 +75 +130 +22 +76 +155

**WIP-Epic-1168**  
Birth Wt. 127 Wt. 87 745  
CED BW WW YW MILK SW SB -2 +1.8 +87 +150 +31 +97 +143

**WIP-Bankroll-1276**  
Birth Wt. 127 Wt. 87 745  
CED BW WW YW MILK SW SB +7 +0.7 +70 +141 +23 +60 +179

**Curt and Sue Wittkopp**  
Circle, Montana • 406-974-3552 (Cell) • 406-485-3552 (Home) • www.wittkoppangus.com

**RIVER BOTTOM KENNELS**

**PROOF OF VACCINATIONS NEEDED**

We provide a place for your dogs to stay while you are away.

**OUTSIDE RUNS • INSIDE KENNELS**  
Air in the summer and heat in the winter.

**CALL LARRY 406-480-2731 or EARLENE 406-525-3181**  
**LARRY & EARLENE DEMPSEY**  
Located south of Wolf Point on Hwy. 528, 2.7 miles west of Harry's on south side of Hwy.

# POSITIONS AVAILABLE

## Northeast Montana Health Services

### FULL-TIME:

Ward Clerk at Trinity Hospital  
CNAs at all Facilities  
RNs and LPNs for Faith Home  
Housekeepers at all Facilities  
Pharmacy Technician at  
Trinity and Poplar Hospitals  
Laboratory Technologist at Poplar Hospital  
Radiologic Tech with Ultrasound Training  
at Trinity Hospital  
Director of Food and Nutrition Services  
at Faith Home  
RN's for Poplar and Trinity Hospitals  
Receptionist at Listerud Clinic  
RN MDS Coordinator at Faith Home

### PART-TIME:

EMTs & Ambulance Drivers at Trinity and Poplar Hospitals  
Executive Director for the NEMHS Foundation

For more information and applications, see us online  
at [www.nemhs.net](http://www.nemhs.net). Applications can also be picked up at  
any facility in Wolf Point or Poplar.

For further details contact Julie Kauffold,  
Director of Human Resources at Trinity Hospital  
406-653-6582 or email [jkauffold@nemhs.net](mailto:jkauffold@nemhs.net)



**FOR SALE:** 2019 Ford Edge  
Limited, heated leather, very  
clean! Call Jack 406-653-1160

**FOR SALE:** 2017 Honda  
Accord Sport, auto trans-  
mission, black exterior. Call  
Erin 406-653-1160 c/o

**FOR SALE:** 24 ft. sections of  
steel windbreak (non-standing  
& free standing). Also, free-  
standing 24 ft. panels. Kueffler  
Ranch Supply. 701-694-3620

**FOR SALE:** John Deere  
chuck wagon, hydraulic  
driven. \$4,000 Call 406-963-  
2228 c/o



## STEVENSON & SONS

**FAMILY  
ASSISTANCE IN**

*Personalized  
Funeral Services  
Cremation Services  
Pre-Planning  
Monuments  
Pet Services*

IT'S OUR PRIVILEGE TO SERVE YOU

### SERVICE TO MONTANA & NORTH DAKOTA

**Clayton Stevenson Memorial Chapel**  
102 Custer, Wolf Point, MT 59201  
Phone: (406) 653-2600  
[www.claytonstevensonchapel.com](http://www.claytonstevensonchapel.com)

**Bell Mortuary**  
701 2nd Avenue South, Glasgow, MT 59230  
Phone: (406) 228-2112  
[www.bellmortuarymontana.com](http://www.bellmortuarymontana.com)

**Stevenson & Sons Funeral Home**  
702 Lehman Ave, Circle, MT 59215  
Phone: (406) 485-3560  
[www.stevensonandsons.com](http://www.stevensonandsons.com)

**Fulkerson Stevenson**  
315 2nd St NW, Sidney, MT 59270  
Phone: (406)-488-2805  
[www.fulkersons.com](http://www.fulkersons.com)

**Fulkerson Stevenson**  
218 West Highland Drive, Williston, ND 58801  
Phone: 701-572-6329  
[www.fulkersons.com](http://www.fulkersons.com)



PAUL WEMMER

## WE ARE NORTHEASTERN MONTANA'S NEWEST CAR DEALERSHIP! BUT WE PROVIDE "OLD FASHIONED" CUSTOMER SERVICE!



**2022 CHEVY CAMARO**  
RED HOT,  
2SS, 6.2L,  
6-SPEED.  
#102837  
  
MSRP \$48,375  
**STOP IN TODAY!**

**2022 CHEVY EQUINOX**  
SILVER ICE, LT,  
AWD, 1.5L TURBO,  
HEATED SEATS.  
#123356  
  
**COMING SOON!**

**2022 GMC ACADIA**  
WHITE FROST  
TRICOAT, DENALI,  
AWD, TECHNOLOGY  
PKG., TRAILING PKG.,  
#113582  
  
**JUST ARRIVED!**

**2021 GMC 1500**  
PACIFIC BLUE,  
DOUBLE CAB,  
5.3L, ELEVATION  
ED., BLACK OUT  
PKG. #416358  
  
**CALL PAUL TODAY!**

**WE HAVE NEW  
INVENTORY  
ARRIVING WEEKLY.  
CALL US TODAY TO  
SEE WHAT'S NEXT!**

**2018 CHEVY TAHOE**  
SIREN RED,  
5.3L, LT, 4WD,  
45,000 MILES.  
#388489  
  
GAS CERTIFIED PRICE **\$53,699**


**2020 CHEVY K1500**  
BLACK, LTZ, CREW,  
4X4, 5.3L, BLACK  
OUT PKG.,  
ONLY 19,000 MILES.  
#115589  
  
CHEVY CERTIFIED **\$53,799**

**2019 CHEVY TRAVERSE**  
BLACK CURRANT,  
LT, 3.6L V6, AWD.  
#106924  
  
CHEVY CERTIFIED **\$40,999**

**2016 FORD EXPEDITION EL**  
SILVER, XLT,  
LEATHER, MID-ROW  
BUCKETS, 3.5  
ECOBOOST.  
#F55459  
MSRP \$29,000  
GAS PRICE **\$23,500**

**2012 CHEVY K1500**  
IMPERIAL BLUE,  
CREW, SHORT  
BOX, 4X4, LTZ,  
REMOTE START.  
#145145  
  
GLASGOW AUTO SALE PRICE **\$22,500**

**2017 FORD F-150**  
WHITE, CREW,  
CLOTH,  
3.5L, V-6, 4X4,  
68,000 MILES.  
#B41977  
  
GAS PRICE **\$34,000**

**2016 FORD F-250**  
INGOT SILVER, CREW,  
SHORT,  
4X4, 6.2L, XLT,  
ONLY 86,500 MILES.  
#B53917  
  
GAS PRICE **\$32,500**

\*Buyer must qualify for all rebates.

CALL PAUL OR JAMES TODAY 406-228-9325 OR ON THE WEB @ [GLASGOWAUTOSALES.COM](http://GLASGOWAUTOSALES.COM)

## HELP WANTED



# WOLF POINT SCHOOL DISTRICT

"BELIEVE, ACHIEVE, SUCCEED"

01/03/2022

### CERTIFIED OPENINGS:

- Southside Elementary Teacher (K-3)
- Northside Elementary Teacher (4-6)
- Northside Special Education Teacher (4-6 grades)
- JH ELA Teacher
- JH/HS Social Studies Teacher
- JH/HS Math Teacher
- HS Special Education Teacher

### CLASSIFIED OPENINGS:

- Instructional Paraprofessionals (all grades)
- Non-Instructional Paraprofessionals (9-12 grades)
- Assistant Custodians
- Assistant Cooks
- Substitute Teachers
- Substitute K-3 Administrative Secretary
- District-Based Therapist

### TRANSPORTATION OPENINGS:

- Cold-Weather Bus Driver
- Route Bus Driver
- Activity Bus Driver

### EXTRACURRICULAR ACTIVITIES:

- JH Head and Assistant Track Coach
- HS Assistant Track Coach (2)
- HS Head Volleyball Coach

Applications are available at [www.wolfpointschools.org](http://www.wolfpointschools.org), Job Service, or at the District Office at 400 Fallon Street.

All positions are open until filled

Please submit applications to Linda Warmbrod, District Executive Assistant, [lwarmbrod@wolfpoint.k12.mt.us](mailto:lwarmbrod@wolfpoint.k12.mt.us)

Please contact Linda with any questions at 406-653-5543

# Nemont.TV

## 2021-2022 HIGH SCHOOL BASKETBALL

### GIRLS AND BOYS TENTATIVE LIVE SCHEDULE

01/14: North Country @ Lustre  
01/15: Wolf Point @ Scobey  
01/20: MonDak @ Plentywood  
01/21: Poplar @ Wolf Point  
01/25: Lustre @ Scobey  
01/28: Culbertson @ Plentywood  
02/04: North Country @ Scobey  
02/11: Plentywood @ Froid-Lake  
02/12: Bainville @ Culbertson



**WATCH LIVE AT  
WWW.NEMONT.TV**

All games will be free for your viewing enjoyment thanks to these sponsors:

**PRO CO-OP**  
AG CENTER



**Independence  
BANK**



**Sheridan Electric  
Cooperative, Inc.**  
A Touchstone Energy Cooperative

# GREAT DEALS

**\$7.99**  
Each

Working Hands Cream  
• Use for dry skin and skin repair  
• 3.4 oz.  
750684

3.2 Oz. Foot Cream  
750691 \$7.99 Each



**\$16.99**

Do It Best  
• 6 ft. Cord 10" Brooder Heat Lamp



**\$31.99**

Exclusive **CHANNEL LOCK** products  
ONLY AVAILABLE HERE

Exclusive 25' 14/3 Heavy-Duty Locking Contractor Cord  
• Slide Locking, Lighted ends  
• Durable 14-gauge cord, made to withstand the roughest of jobs  
500230



**\$5.79**

SATCO Heat Lamp Indoor  
• BR40 Infrared Reflector  
• 125W Clear



## AGLAND CO-OP

**Hardware & Ranch**

329 Cascade Street • Wolf Point, MT  
Hours: Mon. - Sat. 8am - 5:30pm • Sun. 12pm - 3pm

## HEALTH DEPARTMENT SEEKING VOLUNTEERS



The Roosevelt County Health Department is looking for community members with or without medical training to serve as volunteers.

There are many roles in which volunteers could serve, including medication or vaccine clinic assistants, inventory/supply managers, traffic control officers, educators, and many others. The specific role that a volunteer plays will depend upon their background, interests, and skills, as well as the needs of the health department and the community.

**Volunteering is personally rewarding and takes very little time.**

Please consider calling **(406) 653-6223** to find out more information and learn how you could contribute to the health of your community.

## FREE TRADER

**ADVERTISE HERE  
TODAY!**

# CAUGHT YOU LOOKING

The FREE Trader is not responsible for any typographical error to any ad. We will re-run any / or part of an ad free of charge with the corrections at our discretion. We will not pay for any ad corrections by any other media.

# 24TH ANNUAL ICE FISHING DERBY~2022

AT DREDGE CUTS TROUT POND- HWY 117, FT. PECK LAKE

Saturday, January 29, 2022  
OR Saturday, February 5, 2022  
from 12-3 PM

Registration 11 AM-1 PM  
1st Place - Guaranteed \$2,000

## CASH AND PRIZES AWARDED

### Entry Fee: \$50 per hole or 3 holes for \$100

Must have valid  
Montana Fishing license in possession

- 1. Must be 18 or older**
- 2. Children may fish with  
a parent/guardian/or adult.**

Largest Fish- Walleye, Lake Trout,  
Northern Pike, Burbot, Bass,  
Yellow Perch, Carp, or Sucker wins.  
If a tie occurs, first fish wins!



#### SPONSORS:

Nemont Beverage, Agland Co-op, T&R Trucking, Scottie Express Wash, Coca Cola, D&G Sports & Western, Edward Jones Bethanie Keim, Ezzies Wholesale, Independence Bank Glasgow, JR's Party Store #24, Lakeridge Lodge & Bait Shop, Fort Peck Marina & Bar, Cottonwood Inn & Suites, KLTZ Mix 93, Northern Prairie Auto Sales

To enter: Contact  
The Glasgow Area Chamber of Comm. & Ag.  
PO Box 832 Glasgow, MT 59230  
Visit: [www.glasgowchamber.net](http://www.glasgowchamber.net)  
or Email: [chamber@nemont.net](mailto:chamber@nemont.net)  
**Co-Sponsored by Glasgow Area  
Chamber of Commerce & Agriculture, Inc.**

2016 FORD F-150 PLATINUM



3.5L, Automatic, Shadow Black, 61,517 Miles. UP2932

2016 FORD F-150 PLATINUM



3.5L, Automatic, Blue, 117,253 Miles. UP2933

2019 FORD F-150



King Ranch, Super Crew 601A, Loaded, 70,310 Miles. UP2941

2016 RAM 1500



5.7L, 4WD, Crew Cab, 6.4 ft. Box, Laramie, White. UP2943

2020 JEEP GRAND CHEROKEE



3.6L, Trail Hawk, 4X4, 41,289 Miles. UP2963

2018 GMC SIERRA 2500HD DENALI



6.6L, Crew Cab, Standard Box, 4WD, Dark Slate Metallic. UP2961

2018 FORD F-150 XL



3.5L, 4WD, Super Crew, 5.5' Box, White Platinum, 47,619 Miles. UP2957

2018 FORD EXPLORER SPORT



3.5L, Automatic, White, 22,806 Miles. RM1027

2015 FORD SUPER DUTY F-350



6.7L, Diesel, 4WD, Crew Cab, 6 3/4 Ft. Box, Platinum, 90,900 Miles. UP2968

2014 FORD F-150



3.5L, 4WD, Super Crew, 5 1/2 ft. box XL, Vermillion Red, 77,099 Miles. UP2948

2015 FORD EXPEDITION EL



3.5L, 4WD, 4 Door Platinum, Green Gem Metallic, 89,269 Miles. UP2949

**Celebrate the New Year in Style....  
Stop in at Hi-Line Ford Today.**

Your Local Authorized DewEze Dealer. Large selection of Bale Beds, Flatbeds & Beef Cake Feeders In Stock!

## NEW VEHICLES

### NEW BRONCO BADLANDS EDITION



Come check out the Bronco Badlands Edition in our Showroom!

\*Bronco is part of Ford's FCTP Live Mannequin Program and it's not for sale. It will become available with the other FCTP Program Broncos February 1, 2022.

#### 2021 FORD EDGE SEL



2.0L, AWD, Sport Utility, Carbonized Gray Metallic. FP2783

#### 2021 EDGE TITANIUM



2.0L, AWD, Sport Utility, Iconic Silver Metallic. FP2763

#### 2021 FORD F-150 XL



3.5L, 4WD, Super Crew, 5.5' Box, Anti Blue, ONLY 3,985 Miles. UP2969

2014 FORD F-350 SRW



6.7L, 4WD, Super Duty, 6 3/4 Ft. Box, King Ranch, 85,900 Miles. UP2971

2018 FORD F-150 LARIAT



3.5L, 4WD, Super Crew, 6.5' Box, Ruby Red Metallic, 41,000 Miles. UP2973

Call us for all your vehicle needs!  
**CALL NORM OR JOSH and \$AVE-\$AVE-\$AVE**  
Hwy. 2 East, Glasgow, MT  
**228-2141 or 1-866-528-2141**  
**[www.hilineford.net](http://www.hilineford.net)**



\*See dealer for details.

# Gysler

## Furniture & Appliances

### Great Selection of Recliners



**In Stock  
Upright and  
Chest Freezers**

**COME SEE US FOR ALL YOUR HOME FURNISHINGS! 202 Main Street - Wolf Point, MT • (406) 653-2433**



**GLASGOW STOCKYARDS I LLC**

Serving N.E. Montana  
Livestock Producers Since 1946

1946 - 2022

## JANUARY

**THURSDAY JANUARY 13, 2022** - MATH FARMS ANNUAL BULL & FEMALE PRODUCTION AUCTION AND MONTHLY STOCK COW & BRED HEIFER AUCTION AND ALL CLASS CATTLE AUCTION

**THURSDAY JANUARY 20** - FEEDER SPECIAL AND ALL CLASS CATTLE AUCTION

**THURSDAY JANUARY 27** - ALL CLASS CATTLE AUCTION

## FEBRUARY

**THURSDAY FEBRUARY 3** - BIG FEEDER SPECIAL AND ALL CLASS CATTLE AUCTION

**THURSDAY FEBRUARY 10** - 34TH WITTKOPP ANGUS BULL & FEMALE PRODUCTION AUCTION AND MONTHLY STOCK COW & BRED HEIFER AUCTION AND ALL CLASS CATTLE AUCTION

**THURSDAY FEBRUARY 17** - YOUNG BROTHERS ANGUS BULL AUCTION & FEEDER SPECIAL & ALL CLASS CATTLE AUCTION

**\*\*BULL PRODUCTION AUCTIONS: CHECK OUT THE RANCH WEB SITES AND FACEPAGES FOR MORE INFORMATION\*\***

**THURSDAY FEBRUARY 24** - ALL CLASS CATTLE AUCTION

## MARCH

**THURSDAY MARCH 3** - MARCH FEEDER SPECIAL & ALL CLASS CATTLE AUCTION

**THURSDAY MARCH 7** - VESETH CATTLE COMPANY RED ANGUS PRODUCTION AUCTION

**THURSDAY MARCH 24** - ROUGH COUNTRY BREEDERS PRODUCTION AUCTION & 3Y BAR CATTLE COMPANY PRODUCTION AUCTIONS & ALL CLASS CATTLE AUCTION

**THURSDAY MARCH 31** - 5TH ANNUAL GIBBS RED ANGUS PRODUCTION AUCTION & NORTHERN LITES RED ANGUS PRODUCTION AUCTION

## CRYSTALYX AND PURINA TUBS:

**CRYSTALYX 200# BIO TUBS: IN STOCK NOW: BGF 20% BGF 30% AND BRIGADE STRESS TUBS.**

**PURINA 250# BIO TUBS: 21-9 AND 24-12 TUBS. 24-12 IS A NEW TUB WITH 24% PROTEIN AND 12% FAT. THESE TUBS ARE ALL NATURAL AND WILL FIT THE GAP PROGRAM.**

## GLASGOW STOCKYARDS I LLC

P.O. BOX 1170 \*GLASGOW, MT 59230 • 406.228.9306

**JAKE NEWTON 406.390.5109**  
**CODY CORNWELL 406.263.1589**  
**IVA MURCH 406.263.7529**  
**DEAN BARNES 406.263.1175**  
**ED HINTON 406.783.7285**  
**DYLAN WELSH 406.399.1877**

**WWW.GLASGOWSTOCKYARDS.COM**

GSINEMONT.NET • GLASGOWSTOCKYARDS FACEBOOK

# Reach Northeast Montana With An Ad In The

**FREE TRADER ALWAYS OPEN**

[www.freetradermt.com](http://www.freetradermt.com)



Place Your Ad by:

Phone: 1-406-653-3344 or

Fax: 1-888-624-1925

Mail: 232 E Johnson St.,  
Wolf Point, MT 59201

email: [freetrader@nemont.net](mailto:freetrader@nemont.net)

## REGISTERED NURSE NEEDED AT ROOSEVELT COUNTY HEALTH DEPARTMENT

*Would you like an RN position that allows you to use a wide variety of skills with a large degree of autonomy in a supportive atmosphere?*

Roosevelt County Health Department in Wolf Point, MT is seeking a registered nurse to assist with the following programs:

### VACCINATION PROGRAM

- Vaccine administration, storage and handling
- Supporting vaccine use in schools and daycares
- Educating the public and working to increase vaccination rates in Roosevelt County

### COMMUNICABLE DISEASE PROGRAM

- Surveillance, investigation and reporting cases of legally reportable diseases
- Conduct testing for Hep B, Hep C, HIV, and sexually transmitted diseases
- Outbreak response

### MATERNAL CHILD HEALTH

- Planning and implementing measures that support children from pregnancy through adolescence and women in child-bearing years
- Opportunity to become a certified car seat installer
- Opportunity to work with the PAX Good Behavior Game

### BENEFITS:

Health, dental, and vision insurance, 10 paid holidays per year, Public Employee Retirement System

### QUALIFICATIONS:

Registered nurse in Montana

### HOURLY WAGE:

The position is 32-40 hours per week  
Hours negotiable • Up to \$35.50 depending on nursing degree and experience

### TO APPLY:

Apply at Job Service 201 Main Street Wolf Point, MT  
May request an application by phone at (406) 653-1720 or by email at [WOLFPOINTJSC@MT.GOV](mailto:WOLFPOINTJSC@MT.GOV)

**THIS POSITION OPEN UNTIL FILLED**

## FOR SALE 2015 CAN AM MAVERICK MAX 1000R X RS DPS



Low hours and only 1,150 miles. Just serviced and checked over by Can Am dealer. Winch, Light bar, Windshield and Bimini Roof

**\$14,800**

**Call James 406-650-7840**

## The Right Product at the Right Time.



No matter the brand, BioZyme has the right products for the right stage in your animal's life. In addition, all BioZyme supplement products contain Amaferm®, a natural prebiotic that is designed to maximize the nutritional value of your animal's feed resulting in better performance.

**BIOZYME INCORPORATED**

For more information, contact:  
**Stuber Enterprises, Buster Stuber (406) 762-7025**



## DO YOU NEED YOUR CARPETS CLEANED?

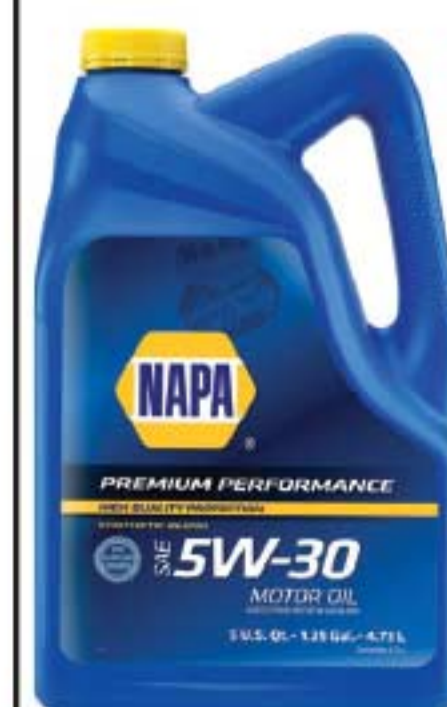
Associated Cleaners can do the job!

Extraordinary carpet, furniture and drapery cleaning

**Call Today! 653-2729**



## Oil Special!



**\$12.99** /5 Qt. Jug

NAPA Conventional Motor Oil

**\$2.59** /1 Qt.

Pricing Good until Jan. 31st, 2022

**Wolf City Auto Inc.**

300 4th Avenue North • Wolf Point, MT 59201  
406-653-2213



**WE ARE ON FACEBOOK – MISSOURI RIVER REALTY GLASGOW!**

**367YL7** – 411 1st Ave. So. Glasgow - Formerly a Chinese Restaurant. This commercial building can be whatever you wish. Business Personal Property includes but not limited to tables, chairs, display cases, register, security cameras. All equipment in the kitchen, cook stove, freezers, refrigerator, prep tables, shelving & more! The basement is mostly finished with 3 sleeping rooms, full bath, laundry area, living room and storage area ..... \$200,000

**433PM7** – NEW LISTING - 26 Ch... sock Sky Park Fort Peck, MT. 1.1+/- acre lot, all city services available..... \$110,000

**365MP7** – 923 3rd Avenue South Glasgow Single car garage with room to build a home. Extra room on lot for off street parking for your vehicles or toys..... \$29,900

**203SR7** - Recreation hunting get away! Easy access from Lewistown, Grass Range or Roundup, 1.5 hours from Billings, MT to a very unique Mountain property, unfinished cabin (steel sided) and developed spring ready for your dream cabin! Two 20 acre tracts can also be purchased if wanting more room (60 acres total) ..... \$95,000

**FARM/RANCH, RESIDENTIAL, INVESTMENT, COMMERCIAL, RECREATIONAL**

**REALTOR** **Equal Housing Opportunity** **Deb Henry (Broker) 406-263-2273**  
**Don Elletson (Sales) 406-263-0248**  
**Jarrell Schock (Broker) 406-480-5500**

**Office: 406-228-2273 • Fax: 406-228-2644**

**mrrealty1@gmail.com**

**www.MissouriRiverRealty.com**



**2022 Dura-Line  
Stock Trailer,  
7' x 24', Gooseneck  
\$18,500**



**2022 Dura-Line  
6' x 16', Bumper  
Pull, 6000 lb. axle  
\$9,950**

**EDDY BAUER  
SALES**

**“Home of the Trailer Doctor”**

**237 Eureka Street  
Wolf Point, MT**

**800-554-1322 or**

**406-653-1322**

**After Hours 406-653-1947**

## 2022 COMBINE OFFER - \$675 IN SAVINGS

### HALF PRICE COMBINE INSPECTION\*

**Two FREE Header Inspections\***

**10% Off All Parts on Select Combines 60 Series & Older\***

**With purchase of \$6,000 of related JD parts & services**

**No Payment No Interest Until November 15, 2022\***

#### PLUS PICK ONE OF THREE OPTIONS:

- ☐ **No Payments No Interest Until January 1, 2023\***
- ☐ **Half Price Standard Combine Wash**  
A \$540 value. Wash not available at all locations
- ☐ **Free Pickup and Delivery**  
Within 100 miles of dealership

**SIGN UP BY JUNE 30, 2022**



\*Savings & Credit offers subject to approved credit and \$6,000 minimum purchase on John Deere Multi-Use Account. Offer valid on qualifying purchases made between 01 January 2022 to 30 June 2022. Subject to approved installment credit with John Deere Financial, some restrictions apply, so see your dealer for complete details and other financing options. Prices and models may vary by dealer. After promotional period, interest charges and payment swill accrue at the regular Multi-Use Account rate. Parts Discount Only Applies to Shop Installed Parts. Not valid with other offers.



**C & B OPERATIONS**  
54272 HWY 2 EAST  
GLASGOW, MT  
(406) 228-2496

**C & B OPERATIONS**  
21 WEST 2ND ST  
CULBERTSON, MT  
(406) 787-6201

**C & B OPERATIONS**  
21 WEST 2ND ST  
CIRCLE, MT  
(406) 485-2145

**C & B OPERATIONS**  
804 EAST 1ST AVE  
PLENTYWOOD, MT  
(406) 765-1531

**VISIT US ONLINE AT DEEREQUIPMENT.COM**



**Sherman Inn**  
The Perfect Place to unwind

**BREAKFAST • LUNCH • DINNER**

Great Restaurant,  
Relaxing Lounge & Casino  
and Welcoming Hotel Rooms!

**Order Online: [shermaninn.com](http://shermaninn.com)**

**Homemade Daily Soup!**










Restaurant Hours Monday - Friday 7 am - 9 pm



Great Meeting Space!  
Book yours today.



Lounge & Casino Hours  
Monday - Saturday 10 am - midnight • Sunday 5 pm - 10 pm



200 East Main Street, Wolf Point, MT 59201 • 406-653-1100

*Tap Into Pure, Delicious Water.....*



**In Stock**



**STORM (Bottom-Load)**  
Our new Bottom-Load water dispenser is the latest model in Crystal Mountain's line of coolers. The Bottom-Load means no more lifting heavy bottles, just open the front door and the bottle slides into the base of the cooler with little effort.

Rent or Rent to Own programs available....

**Aspen**  
A robust bottle water dispenser with a classic design. The Aspen is the perfect water cooler for the traditional home and office delivery.

**In Stock**





**PUROMAX, Reverse Osmosis Systems**  
by F&S Incorporated.

WHEN IT HAS TO BE PURE, TAKE IT TO THE MAX. We Engineer and Design High Grade Reverse Osmosis and Water Filtration Systems for Both Residential and Commercial Use.  
SAVE ON COST – EASY MAINTENANCE  
SAVE WATER – SAVE ENERGY  
Custom Built RO Units  
Champ Series  
& Booster Pump Units

**In Stock**



730 3rd Ave., South Glasgow, MT  
406-228-2614 • Dave Leraas, Owner/Operator  
WE SERVICE WHAT WE SELL!  
Monday-Friday 8 a.m. - 5 p.m.  
Visit our Website: [BigValleyh20.com](http://BigValleyh20.com)



**LIGHTFOOT VETERINARY SERVICES**

Kelly C. Lightfoot, DVM  
Shawn Davidson, DVM  
Marshall MacDonald, DVM  
Laci Schmidt, DVM

Scobey, Montana • 783-5201 or 783-7394  
Hours - 9:00 a.m. to 5:30 p.m.

**Mixed Animal Practice & Well-Equipped Clinic**

Ultrasounding, semen testing, equine surgeries and dentistry with power float, x-rays, small animal surgeries, Pet Food, Medical Supplies, Equine Tack, Purina Equine Feed, and Vaccines

**LOOKING FOR:  
1070 Case Tractor.**

---

**FOR SALE:**  
23.1 x 30  
Brand New  
Titan Tires & Tube.

---


**Call 406-786-7543.**

**COVID VACCINE**

**SERVING AGES 5 AND UP**

Moderna, Janssen (J & J), and Pfizer vaccine available

Available through Roosevelt County Health Department



For an appointment, call (406) 653-6223



**Bryan's**

**Business for Sale**

79 Years in Business  
Family Owned

Turnkey Business!

Be your own boss!

**Contact**  
**406-653-1450**  
**210 Main St.**  
**Wolf Point, MT**

**Large Retail Business 18,000 sq. ft.**

**PROFITABLE**

**Owner is ready to retire.**

# Border Plains Equipment

## Glasgow, MT



**THE LIBERTY DIFFERENCE:**  
**RUGGED DURABILITY**  
**NEXT-GENERATION SAFE TECHNOLOGY**  
**AMERICAN-MADE DEPENDABILITY**



### Value Series

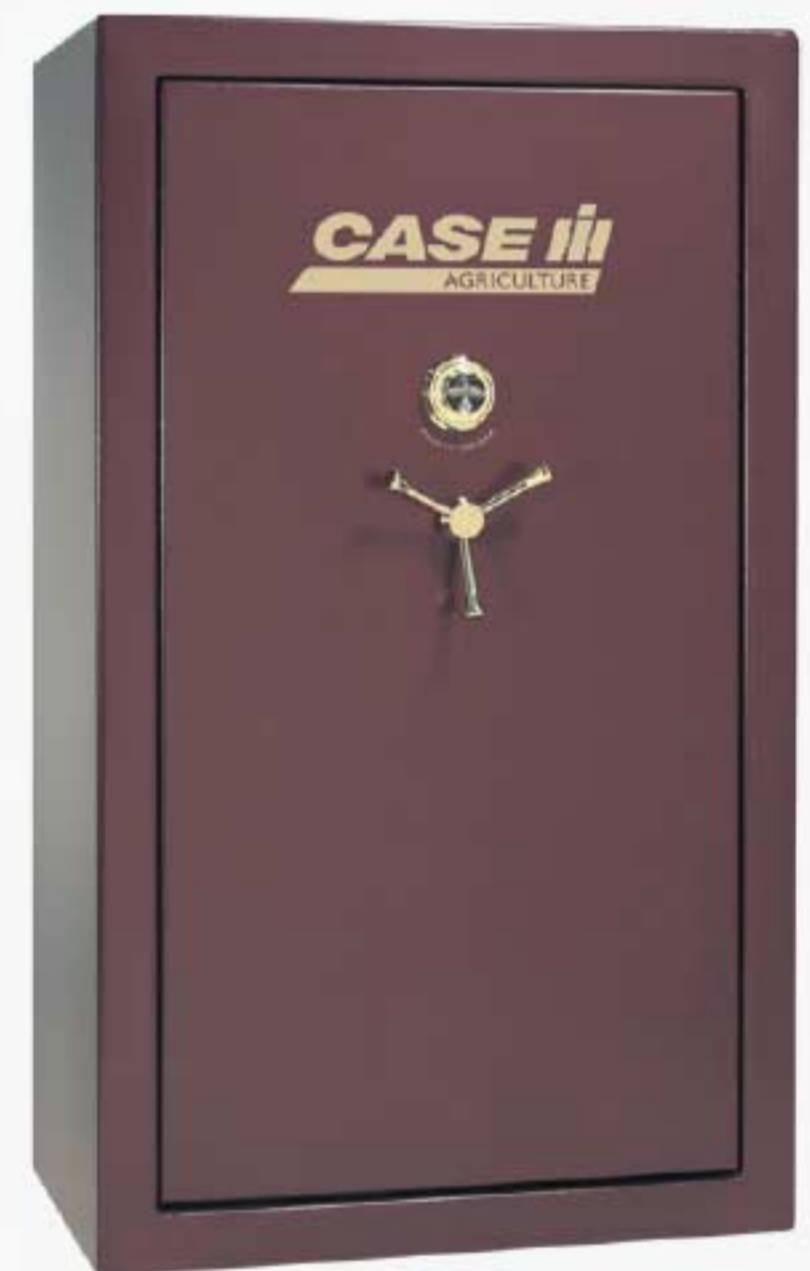
**IN STOCK**



- CERTIFIED 40 MINUTE FIRE PROTECTION
- 1/4" MILITARY LOCKING BARS
- TRIPLE HARDPLATE & RELOCKER PROTECTS LOCK
- THICKER 2-PIECE 14 GAUGE STEEL BODY
- UL LISTED TOPLIT E-LOCK

### Deluxe UL Listed Security

**IN STOCK**



- UPGRADED 75 MINUTE FIRE PROTECTION
- 1/4" MILITARY LOCKING BARS
- EVEN THICKER 11 GAUGE 2-PIECE BODY
- 4-IN-1 FLEX INTERIOR

With 30 years in the business and over 2 million safes sold, Liberty is America's #1 safe manufacturer. That's why Case IH chose to partner with us for their line of home safes. Our safes are backed by our ironclad lifetime fire and theft warranty. If your safe ever experiences a fire or attempted break-in, we've got you covered.

**Free** on-site safe opening  
**Free** replacement safe  
**Free** delivery & Installation of Replacement Safe

**LIBERTY SAFE**  
*Always Protected*



**406-228-9341 • 800-345-6042**

# NEW YEAR NEW RIDE

## STOP IN AT FOX FORD

**2018 FORD  
F-150 XLT**



**GREAT  
RIDE**

3.5L V6, 4 Dr.,  
4WD, Oxford White,  
82,705 Miles.  
Stock #D36083

**\$38,765**

**2021 FORD  
MUSTANG GT**



5.0L Ti-VCT V8 Engine,  
2 Door Coupe, RWD,  
10-Speed, Iconic Silver.  
Stock #135062

**MSRP \$48,200**

**2021 FORD  
F-150 XLT**



**GREAT  
DEAL**

2.7L V6, 4WD,  
SuperCrew,  
5.5' Box, Guard.  
Stock #E65778

**MSRP \$54,135**

**2019 FORD  
F-350 XLT**



**SPECIAL  
PRICING**

6.7L V8, 4 Dr.,  
4WD, Silver Spruce,  
90,000 Miles.  
Stock #C39679

**MSRP \$54,000**

**2018 FORD MUSTANG  
ECOBOOST**



**PREMIUM  
PKG.**

CONVERTIBLE  
2.3L, RWD, 6-Speed Manual,  
White, 40,000 Miles.  
Stock #33186

**\$27,950**

**2018 FORD F-150  
XLT 4WD**



SuperCrew, 5.5' Box, 2.7L V6,  
Shadow Black, 35,283 Miles.  
Stock #E23771

~~**\$43,000**~~  
**SALE \$39,995**

**2018 FORD F-150  
XLT 4WD**



**SPORTS  
EDITION**

SuperCrew, 5.5' Box, 2.7L V6,  
Ingot Silver, 35,793 Miles.  
Stock #D28602

~~**\$44,000**~~  
**SALE \$39,995**

**2014 FORD FOCUS  
SE**



2.0L, 4 Dr., FWD,  
Sterling Gray Metallic,  
59,490 Miles.  
Stock #235946

**\$10,900**

**2017 FORD  
F-250 XL**



6.2L V8, 4 Dr.,  
4WD, Oxford White,  
146,798 Miles.  
Stock #D68597

**\$30,675**

**2019 FORD  
TAURUS SHO**



**PERFORMANCE  
PKG.**

4 Dr., 3.5L, AWD,  
Ingot Silver Metallic,  
39,300 Miles.  
Stock #108680

**\$34,750**

**2022 JET GRAIN  
TRAILER GT**



**50'**

Triple Axle with lift, 24.5 Tires,  
72" Sides, Electric Traps and  
Tarps Stock #000117

**\$65,700**

**2007 WILSON  
GRAIN TRAILER**



78" Side Walls, 48 ft.,  
Triple Axle with lift, Stock #244489

~~**\$27,000**~~  
**SALE \$26,000**

**1978 GMC 'S'  
TRUCK S15**



Tandem Axle, Steel Floor,  
Runs & Drive. Stock #602496

**\$8,500**

**1996 CASSELTON  
GRAIN TRAILER**



50'. Stock #133147

**\$14,900**

**2020 FORD  
F-350 XLT**



Short Box, Crew Cab, 4 Dr. 4WD,  
White, 65,530 Miles. Stock #C43459

~~**\$63,799**~~  
**SALE \$61,995**

**2015 FORD  
F-250 XLT**



6.2L V8, 4 Dr., 4WD, Maroon,  
122,450 Miles. Stock #B23539

**\$35,765**

**2018 FORD EDGE  
TITANIUM**



2.0L, Sport Utility, AWD, Burgundy  
Velvet, 58,663 Miles. Stock #B86485

~~**\$31,675**~~  
**SALE \$30,995**

**2018 FORD  
F-150 LARIAT**



Crew Cab, Short Box, Tinted Windows,  
Nice Grill Guard, Blue Jean, 71,785 Miles.  
Stock #C46874

~~**\$38,995**~~  
**SALE \$36,789**

**FOX FORD**

\* SEE DEALER FOR DETAILS  
VISIT US ONLINE. GO TO: [FOXFORDWOLFPOINT.COM](http://FOXFORDWOLFPOINT.COM) • **VEHICLES, TRUCK & GRAIN TRAILERS INVENTORY**

**406-653-1350 • 101 ANACONDA. WOLF POINT, MT**

**[www.foxfordwolfpoint.com](http://www.foxfordwolfpoint.com)**

**CALL MIKE FOX, DYLAN RYDER OR NOEL SANSAVER**

