

AD DEADLINE: 5:00 p.m.
Thursday, June 1st

TAKE ONE

POSTAL CUSTOMER
FREE TRADER
Connecting Buyers & Sellers
NOW ONLINE Go to freetradermt.com

PSRST STD
U.S. POSTAGE PAID
WOLF POINT, MT
PERMIT NO. 44
ECRWSS
MAILING ADDRESS:
232 E JOHNSON ST.
WOLF POINT, MT 59201
CALL: 406-653-3344
FAX: 888-624-1925
EMAIL:
freetrader@nemont.net

The **FREE TRADER** Published Bi-Monthly Is Mailed & Distributed **FREE** from
Malta to Bainville and the Canadian Line to Circle, Montana

Vol. 30 No. 10

Connecting Buyers & Sellers For Over 30 Years

May 24, 2017

WOLF POINT CHAMBER OF COMMERCE & AGRICULTURE PRESENTS


June 17th, 2017



Featuring music by

Downtime • Seasons

\$35 Advance Ticket | \$40 At Gate | \$20 Non-drinking Ticket | 21+ ONLY | 5 PM | Marvin
Brookman Stadium | 30+ Montana Craft Beers & Wine • Also Available Bud Light & Coors Light

 [Facebook.com/wolfpointchamber](https://www.facebook.com/wolfpointchamber)

Tickets available at Bryan's, Doc' Z Missouri Breaks, and Western Bank

LOOK FOR YOUR NEXT

FREE TRADER
Connecting Buyers & Sellers

June 7th, 2017

MAINTENANCE FREE AFFORDABLE BRICK SIDING

FOR YOUR HOME OR BUSINESS, REMODEL OR NEW CONSTRUCTION



Novabrik is a mortarless brick siding material. It interlocks and stacks together to form a weather tight, maintenance free, and beautiful exterior.

No Mortar • Easy To Install
 Durable • Beautiful Concrete Brick
 Resists Water Penetration
 No Maintenance
 High Resistance to Freeze & Thaw Cycles
 High Soundproofing
 Can be used in Catastrophe Areas
 Variety of Colors to Choose From
 Finished Product is 2 3/4" Thick

RIVERSIDE BRICK YARD

Located at Riverside Storage, Fort Peck, Your Dealer in NE Montana
 Visit www.novabrik.com
 Call Don in Fort Peck for more info
 406-526-3241 Evenings • or 406-263-7207 Days

FOR SALE: 1998 Model 2550 New Holland Swather, #615312; 16' 2326 header, good cab, AC, 2430 hours, \$23,500, Call; 406-895-7929, Cloverdale Ranch, Redstone, MT 11p

FOR SALE: 2008 Canyon Trail 32 ft. Bumper Pull, Equalizer hitch, Model Y32TBHS, 2 Slides, Big living room slide, Bunk Beds slide, 2 outside showers, 1 1/2 Bath, Excellent shape, \$13,750; Call Craig. Saco, MT. 406-390-4755 c/o

FOR SALE



Custom Built Carriage, 4 wheel disc brakes, seats eight, very nice, Sets of Leather driving harness with headstalls, Single driving harness, Antique Doctors buggy, Homemade sleigh, Saddles and other tack.
CALL 406-263-8018

Western Building Center

Glacier Gold Potting Soil



\$3⁹⁹

1.5 cu. ft. POTSOIL Reg. \$5.54



Western Building Center
 5929 Road 1020, Culbertson
 (406) 787-5880

Culbertson location only. Sales limited to stock on hand. No dealer or big box sales

FOR SALE: 2015 GMC Sierra 1500 Denali, 4 Dr, Crew Cab, 6.2 Gas engine, 8-speed automatic, 10,700 miles, like new condition, fully equipped, no sunroof, White Diamond coat color, \$45,000 or OBO, Duane Evenson Estate. For more information call; Raymond Wang 406-895-7913 10o

Looking for antiques older primitive items, outdoor junk. Old filled up sheds and buildings full of junk (treasures). Often times there are things I am interested in buying. Also can conduct estate sales, large rummage sales, moving sales, including complete clean out; Call Patsy 406-785-2321 c/o



FREE TRADER

Connecting Buyers & Sellers

Check us out online!
www.freetradermt.com

WILBUR-ELLIS®

WOLF POINT - OPHEIM

Agribusiness

CHECK OUT OUR NEW FERTILIZER PLANT

We are a full service agronomy location offering; fertilizer, custom blending, spreading, soil sampling, chemical and delivery, high quality seed, and a full precision package. These are complimented with the one-on-one relationship our skilled field specialists develop with every customer we serve.

CALL FOR PRICING

Main office number
406-525-2119
Fertilizer Plant
406-525-3109

Branch Manager
Darin Weinberger
406-650-1137

Fertilizer Plant Manager
Jeff Long
406-650-1131

Agronomy Team
Ryan Wall
406-650-1138
 Opheim
Vince Renner
406-390-1907



THE WOLF POINT PUBLIC SCHOOL

Is seeking applications for the following positions:

PART TIME POSITIONS

- Substitute Teachers and Custodians
- Activity Bus Drivers
- Substitute Cooks

JH/HS

- JH English
- Counselor

NORTHSIDE SCHOOL

- Classroom Teacher

SOUTHSIDE SCHOOL

- Kindergarten Teacher
- 1st Grade Teacher
- 2nd Grade Teacher
- 3rd Grade Teacher
- Health Enhancement Teacher

COACHES

- HS Cheer Coach
- JH Boys Basketball

Applications are available at the Wolf Point Job Service or Wolf Point School District Office. Please call Superintendent Rob Osborne at 653-5540 with any questions. All positions are open until filled. For coaching positions, please contact Eric Peterson at 650-5155.

WOLF POINT SCHOOL DISTRICT – BELIEVE, ACHIEVE, SUCCEED!

FOR SALE: JD 105 Combine for parts, '98 Lumina for parts, good engine; Buzz saw; 18' Bale Elevator; Antique 12' Dump Rack; Call 406-263-0502 c/o

AN ELUDE FOR UNWANTED EQUINE: Will take donations for healing program or will negotiate; Call 406-448-2593 or 406-768-8188 10o

REAL ESTATE, HOUSE, & HOUSEHOLD AUCTION

SATURDAY, JUNE 10, 2017 10:00 A.M.

LOCATION: From Fairview, MT- Take Highway 200 W towards Sidney for 1 mile. Lunch will be available.

REAL ESTATE WILL SELL AT NOON
OWNER'S: Terry and Kathy Gaffield of Fairview, MT will offer the following property to the public at auction. The final bids will be subject to their approval. The Owners reserve the right to accept or reject any and all bids.
LEGAL DESCRIPTION: Section 18, Township 24 N, Range 60 E, #86 Parcel N/A 1.33 acres in SENE PER COS #86 The full legal description is too long to print.
HOUSE: 1232 sq. ft. house, 2-bedrooms, 1-full bath, finished full basement w/many rooms and 3/4 bath. Attached 3-car garage, 6' chain link fence in back yard.

GUN SAFE • HOUSEHOLD • ANTIQUES • BOAT, DOORS, SHOP & MISC. • LAWN & GARDEN

Auctioneers Note: Terry and Kathy have decided to sell their real estate and house. This house has been well taken care of and is in excellent shape. This property is just a mile from Fairview and has 1.33 acres along Highway 200. There are five apple trees and three fruit bushes. There are many nice items at this sale and very unique antiques. We hope to see you June 10th

- RICK



Cell 406-939-1632 Statewide Auction 406-485-2548

WE SELL & ADVERTISE ACROSS THE UNITED STATES www.r-kauction.com

Rick Kniepkamp 406-485-2548 or cell 406-939-1632

GMC HIGH PLAINS MOTORS
WOLF POINT, MONTANA

JAMES SAYS
"GM HAS STARTED THE MONTH WITH SOME GREAT OFFERS! SEE MY GUYS WHILE SUPPLIES LAST."



2017 BUICK LACROSSE
DARK FOREST GREEN, 3.6L V6, PREMIUM PKG, SIGHTS & SOUND PKG. #137472
***\$2,000 REBATE**



2017 BUICK ENCORE
COASTAL BLUE, 1.4L TURBO, AWD. #038224 MSRP \$31,985
SUPPLIER \$30,957 MINUS \$3,050 NOW \$27,887*



2017 CHEVY CRUZE
ARCTIC BLUE, LT, 1.4L TURBO. #559749
\$3,000 REBATES* BUY FOR \$19,999



2018 CHEVY EQUINOX
ALL NEW, SUMMIT WHITE, AWD, 1.5L TURBO, LS, 4G LTE. #122830
CALL DUSTIN TO TEST DRIVE



2017 CHEVY TRAVERSE
WHITE, 1LT, HEATED SEATS, AWD. #244837
\$3,000 REBATE* BUY FOR \$33,999



2018 CHEVY EQUINOX
ALL NEW, ORANGE BURST MET, AWD, 1.5L TURBO, LT, KEYLESS ENTRY. #121969
STOP IN & SEE PHIL



2017 GMC DOUBLE CAB 1500
QUICKSILVER, SLE, 5.3L, SLE VALUE PKG. #174124
\$3,500 REBATE* BUY FOR \$39,999



2017 GMC CANYON CREW
QUICKSILVER, SLE, ALL TERRAIN PKG, V6, 4X4. #252074
CALL PHIL FOR DETAILS



2017 CHEVY TAHOE LT SIGNATURE
SILVER ICE, SUN, ENTERTAINMENT, & DESTINATION PKG, MAX TRAILERING #168965
PRICED TO SELL



2017 CHEVY CREW 1500
PEPPERDUST, LTZ, 5.3, NAV, PLUS PKG. #363438 MSRP \$51,740
\$4,500 REBATES*



2017 CHEVY CREW 1500
SILVER ICE, LTZ, 5.3L, MAX TRAILER PKG, 20" WHEELS. #355884
\$53,390 MSRP
\$4,500 REBATES*



2017 GMC CREW
BLACK, SLE, 5.3L, ELEVATION EDITION. #365013 MSRP \$50,820
SUPPLIER \$47,682 MINUS \$4,700* NOW \$42,982



2017 GMC CREW 1500
WHITE, SLT, STANDARD BOX, Z71. #269382 MSRP \$53,410
SUPPLIER \$50,126, MINUS \$4,700* NOW \$45,426

SOME MAKES & MODELS AS LOW AS 0% FOR 72 MONTHS ON APPROVED CREDIT.



2017 GMC CREW
SUMMIT WHITE, ALL TERRAIN, DURAMAX, HEADREST DVD. #187189
STOP IN AND SEE PHIL TODAY

JUST ARRIVED

CHECK IT OUT

FRESH OFF THE TRUCK



2017 GMC YUKON DENALI
BLACK CHERRY, 6.2L, DVD, NAV, ROOF. #296305
CALL TO SET UP APPOINTMENT



2017 GMC YUKON XL DENALI
SPARKLING SILVER, 6.2L, DVD, NAV, ROOF. #279111
SEE ONE OF THE SALES STAFF



2017 CHEVY CRUZE
TUNGSTEN METALLIC, LT, TURBO, EASY ON GAS. #247539
STOP IN TODAY.

On approved Credit W/GM Financial - Customer must be eligible for all rebates*

CALL JAMES' SALES GUYS - DUSTIN or PHIL at 653-1310 or 1-800-733-1310
CALL FAST EDDY at 650-8143 or WES SOLBERG at 487-2821 or 783-7608
ON THE WEB - WWW.HIGHPLAINSMOTORS.COM




FAMILY ASSISTANCE IN
PERSONALIZED FUNERAL SERVICES
CREMATION SERVICES
PRE-PLANNING
MONUMENTS
PET SERVICES

STEVENSON & SONS

SERVICE TO MONTANA & NORTH DAKOTA	Fulkerson Stevenson 218 West Highland Drive Williston, ND 58801 Phone: 701-572-6329 www.fulkersons.com
Clayton Stevenson Memorial Chapel 102 Custer, Wolf Point, MT 59201 Phone: (406) 653-2600 www.claytonstevensonchapel.com	Bell Mortuary 701 2nd Avenue South, Glasgow, MT 59230 Phone: (406) 228-2112 www.bellmortuarymontana.com
Stevenson & Sons Funeral Home 702 Lehman Ave, Circle, MT 59215 Phone: (406) 485-3560 www.stevensonandsons.com	Fulkerson Stevenson 315 2nd St NW, Sidney, MT 59270 Phone: (406)-488-2805 www.fulkersons.com

IT'S OUR PRIVILEGE TO SERVE YOU



FRESH AS DAISIES

Spring cleaning special on carpets, upholstery, drapes
 CUSTOM WORK
 FREE ESTIMATES

Superb carpet and furniture cleaning!

Associated Cleaning

Call Today! 653-2729

SEAMLESS RAINGUTTERS

Seamless Rain gutters → Lifetime Warranty restrictions apply ← Exclusive Hidden Hanger System



← Fascia Soffit

Give John a Call: 768-3177 or 1-877-DripFree
 Free Estimates << >> Custom Metal Bending



Law Construction - We Service What We Sell

SWAP SHOP
 Antique & Vintage / Pawn, Buy & Consign

Main Street • Wolf Point
 Call 653-1410

HUGE ASSORTMENT OF FIRE ARMS  90+ IN STOCK	LAWN MOWERS WEED EATERS GENERATORS 		
CAR STEREOS & SPEAKERS 	TV & VIDEO GAMES & SYSTEMS 	A LARGE SELECTION OF JEWELRY 	LAPTOPS & TABLETS 

BUY • SELL • CONSIGN • PAWN
 Store Hours: Monday-Saturday • 9:00AM-5:30PM

WANTED

Looking for hay ground or CRP to lease or crop share. May be interested in long term lease. InLine Silage Bale Wrapping also Available.

Please call for more information 406-485-2534

Automotive Diesel Repair on any Ford, Chevy or Dodge
 Auto - Truck - RV Repair
 CHAPPELL'S



AUTOMOTIVE INC

Aluminum & Steel Welding/Fabrication
 54335 Hwy 2 East • Glasgow

Affordable repairs done right...Guaranteed!

406-228-8961 • chappellboys@gmail.com • After Hours: 406-230-2746 • 406-263-5997

For Sale at Private Treaty
 Performance Tested
GELBIEH BULLS
YEARLINGS & 2 YEAR OLDS
 All Polled, Mostly Black

~Satisfaction & Calving Ease Guaranteed~
 Raising Quality Gelbvieh Cattle for 30 years.
 Good Disposition

Praise the Lord Gelbvieh
 Dale & Cindy Andersen
 • Reserve, Montana •
 406-286-5602 • 765-7836 • 765-7834

MCCONE ELECTRIC MEMBERS:

I'd like to thank Don Bogar for his many many years of service to the co-op and his many accomplishments. I've attended a McCone Electric board meeting, as well as probably a hundred or so of others as a general manager. I fully understand the work that's involved, the dedication, and what it takes. I was in the co-op system for 28 years as a manager of two very successful businesses. I understand co-op balance sheets, long term planning, audits, performance appraisals, OSHA regulations, taxes, budgets, human resources, employee relations, depreciation, finances, etc. "Surround yourself with good people, keep them happy and in good equipment" has always been my motto. I love the co-op system; it's in my blood, and I feel I'd make a good board member. I farm and ranch with my wife and kids; I know how important it is that the lights are kept on. McCone Electric has a massive territory that isn't easily covered physically or financially. A challenge that I would enjoy helping fellow board members and management work on. I'd appreciate your vote and would work hard to represent you and the employee base on the McCone Electric board.

Thank you, Rondel Beery.



90 DAYS DEFERRED FINANCING WITH 0% AVAILABLE ON ALL SUV'S! THAT MEANS 90 DAYS TILL FIRST PAYMENT OAC WITH FORD MOTOR CREDIT!



2017 FORD EDGE SPORT AWD

Exterior: Burgundy, Status: In Stock, Mileage: 10, Engine: Twin Turbo Premium Unleaded V-6 2.7 L/164, Trans: Automatic, Stock#: FP2296
UP TO \$4,000 off or \$1,000 PLUS 0% with 90 days deferred*



2016 FORD FLEX LIMITED AWD

Exterior: Magnetic, Status: In Stock, Mileage: 10, Engine: Twin Turbo Premium Unleaded V-6 3.5 L/213, Trans: Automatic, Stock#: FP2272
UP TO \$4,000 off or \$1,000 PLUS 0% with 90 days deferred*



2017 FORD EXPLORER PLATINUM 4WD

Exterior: White Platinum Metallic Tri-Coat, Interior: Ebony Black, Status: In Stock, Mileage: 45, Engine: Twin Turbo Premium Unleaded V-6 3.5 L/213, Trans: Automatic, Stock#: FP2257
UP TO \$3,500 off or \$1,000 PLUS 0% with 90 days deferred*



2017 FORD EXPLORER PLATINUM 4WD

Exterior: Magnetic, Status: In Stock, Mileage: 53, Engine: Twin Turbo Premium Unleaded V-6 3.5 L/213, Trans: Automatic, Stock#: FP2274
UP TO \$3,500 off or \$1,000 PLUS 0% with 90 days deferred*



2017 FORD EXPLORER XLT 4WD

Exterior: White Gold, Status: In Stock, Mileage: 10, Engine: Regular Unleaded V-6 3.5 L/213, Trans: Automatic, Stock#: FP2331
UP TO \$3,500 off or \$1,000 PLUS 0% with 90 days deferred*



2017 FORD EXPEDITION XLT 4WD

Exterior: White Gold, Status: In Stock, Mileage: 10, Engine: Twin Turbo Regular Unleaded V-6 3.5 L/213, Trans: Automatic, Stock#: FP2253
UP TO \$6,400 off or \$4,000 PLUS 0% with 90 days deferred*



2017 FORD EXPEDITION LIMITED 4WD

Exterior: Magnetic, Status: In Stock, Mileage: 16, Engine: Twin Turbo Regular Unleaded V-6 3.5 L/213, Trans: Automatic, Stock#: FP2278
UP TO \$6,400 off or \$4,000 PLUS 0% with 90 days deferred*



2017 FORD EXPEDITION XLT 4WD

Exterior: Blue Jeans, Status: In Stock, Mileage: 10, Engine: Twin Turbo Regular Unleaded V-6 3.5 L/213, Trans: Automatic, Stock#: FP2320
UP TO \$6,400 off or \$4,000 PLUS 0% with 90 days deferred*



2017 FORD ESCAPE SE 4WD

Exterior: Magnetic, Status: In Stock, Mileage: 35, Engine: Intercooled Turbo Premium Unleaded I-4 2.0 L/121, Trans: Automatic, Stock#: FP2258
UP TO \$4,000 off or 0% WITH 90 days deferred*



2017 FORD ESCAPE TITANIUM 4WD

Exterior: Wht Gold, Status: In Stock, Mileage: 10, Engine: Intercooled Turbo Premium Unleaded I-4 2.0 L/121, Trans: Automatic, Stock#: FP2333
UP TO \$4,000 off or 0% WITH 90 days deferred*



2017 FORD EDGE TITANIUM AWD

Exterior: Orange/Brn, Status: In Stock, Mileage: 10, Engine: Regular Unleaded V-6 3.5 L/213, Trans: Automatic, Stock#: FP2334
UP TO \$4,000 off or \$1,000 PLUS 0% with 90 days deferred*



2017 FORD EDGE SEL AWD

Exterior: White Gold, Status: In Stock, Engine: Regular Unleaded V-6 3.5 L/213, Trans: Automatic, Stock#: FP2336
UP TO \$4,000 off or \$1,000 PLUS 0% with 90 days deferred*

See Dealer for details*



**CALL NORM, JOSH OR JERRY AND SAVE-SAVE-SAVE • HWY. 2 EAST, GLASGOW, MT
 228-2141 or 1-866-528-2141
 WWW.HILINEFORD.NET**

Remember all those people you invited to come visit?



THEY'RE COMING

Contemporary Sofa \$449 Many Styles to Choose from	5 PC. Dinette Set \$399 Pub-Style	Rocker Recliner \$299 Plush Comfort	VIZIO Televisions \$229 32" LED
GE Microwave \$149 1.4 cu. 1,000 watts	Whirlpool Dishwasher \$369 Hi-Temp Wash	Amana Range \$529 Smooth-Top	
Whirlpool ALL Refrigerator \$899 18 cu. Ft.	Sofa Chaise \$899 Contemporary Style, Sienna Color	Mattress Set Orthopedic Firm Twin \$299 Full \$369 Queen \$399 King \$599	
Sofa Sleeper \$699 Queen Size	Bunk Bed \$369 Twin/Full Size	Air Conditioners On Sale	
Amana Washer \$429 Heavy Duty, Extra Large Capacity	Amana Dryer \$399 Auto-Dry	5 PC. Living Room Group \$999 Sofa, Love Seat & (3) Tables	

FOR SALE

- 6' X 14' Dock
- 4' X 10' Walkway
- Mounting Pipes, Approved for Fort Peck, Treated Lumber



\$1,000
CALL 406-650-7040

YOUR MONEY SAVING STORE™
MARKLE'S WAREHOUSE
 FURNITURE * TELEVISIONS * APPLIANCES
 1 BLOCK WEST of the UNDERPASS - GLASGOW, MT · (406) 228-4012





**Up to \$1,500
Rebate** Until 5-31-17

820XR
1020XR
1322XR

Take a load off.

The biggest grain-handling lineup in the world just got a whole lot bigger.
The Brandt GrainCart 1322XR combines the extra reach Brandt is known for, with the higher capacity that meets and exceeds your farm operation needs. Boasting a 1,300 bushel tank accompanied by a 620 bu/min 22" auger, the 1322XR is for those farmers who demand more. **That's powerful value, delivered.**



**Up to \$300
Rebate** Until 5-31-17

- 10x70XL
- 10x80XL
- 13x70XL
- 13x80XL
- 13x90XL
- 13x70HP
- 13x80HP
- 13x90HP

Think fast.

Simply the fastest, most durable, and easy to use augers you can buy.
In an independent, side-by-side comparison, Brandt Swing Away augers moved up to 60%* more material than our competitors, in the same amount of time. But speed isn't our only advantage. Premium features like our low profile, self-leveling hopper and heavy-duty scissor lift provide maximum reach and safety while easy access cleanout doors and our patented chain couplers deliver industry-leading convenience and product longevity too. Think durability, ease of use, and premium quality. Think fast. Think Brandt. **That's powerful value, delivered.**
*Based on an independent side-by-side comparison by Meyers Norris Penny LLP.



**Up to \$400
Rebate** Until 5-31-17

Harvest Grain
15 Series - (2) 85'
20 Series - 95' & 110'

Performance, Conveyed.

The Harvest Grainbelt is faster, more reliable, and easier on your grain.
The Brandt Harvest Grainbelt delivers superior reliability and reduced maintenance with exclusive features like our new precision drive rollers that extend roller bearing life, and our new synchronous belt drive system that delivers enhanced wear advantages over a conventional chain drive - which of course means less downtime and more productivity for you come harvest time. **That's powerful value, delivered.**



Anything To Do With Grain,
We Handle It
406-487-2216
1-888-255-4790
email: sales@shortlineag.com
website: www.shortlineag.com
Box 1177 • Scobey, Montana 59263

HAIL SEASON IS HERE

State rates on 28 crops!! 
\$75/acre covers hail & fire both
does not apply to peas, lentils, chickpeas

CIRCLE INSURANCE AGENCY



Phone: 406-485-2741
800-856-2003
cell # 406-850-9843

MOBILE LIVESTOCK SCALE



**AVAILABLE
NOW**

SHIP FROM HOME
PAY YOURSELF THE SHRINK (3%-5%)
BUYER PAYS THE FREIGHT

CALL QUINN HARDY TODAY 406-671-6603
WOLF POINT, MT

FOR SALE

2011 Keystone Sydney Outback M329 FBH



This is a nice clean unit. It has a great floor plan with a Separate front bunk house for the kids. Power awning, Slide protector awnings are just some of the extras.

Original New Price over \$45,000

NOW \$22,500

CALL JAMES 406-650-7840



CHECK US OUT! WE ARE ON FACEBOOK - MISSOURI RIVER REALTY/GLASGOW!

278AJ7 - Custom built cabin newly constructed, 1 deeded acre near Sleeping Buffalo Resort with gorgeous Nelson Reservoir Views. 2 bdrm. 2 baths, master suite and second story bdrm. loft. Many amenities include open kitchen, vaulted ceilings & rock fireplace + more. Att. 2 car garage. JUST LISTED! Asking \$245,000

444WB7 - 545 Hwy 117 Just a stone's throw from the dredge cuts in Park Grove near Fort Peck Lake. 1.92+/- acres. A perfect place for your getaway. Park your camper, toys, build a cabin, home or shop. This property has potential to fit your needs. \$115,000

279AJ7 - 2 deeded residential building lots in the Sleeping Buffalo, Phase 1 site near Nelson Reservoir. Lot 24 is 1.03+/- acres, Lot 25 is 1.02+/- acres. Electricity in place, Sleeping Buffalo water stubbed in to lot. JUST LISTED! Only \$29,000 each

445MM7 - 377 Lustre Rd. - 27+/- acres. Beautiful 3,600 +/- sq. ft. 4-bedroom 2 3/4 bath home. Boasts a master bath with garden tub and walk in shower, large kitchen & dining space, family room, shop, shed/barn, garden, deck and more! \$250,000

239BC7 - West of Saco - 161.305+/- acre irrigated, 50.655 grazing. 4 bdrm. 3 bath home w/large 3 stall garage, 54x100 heated shop w/bathroom, office, auto lift & drive thru for semi or lg. trucks. Indoor riding arena w/heated tack room, 60x60 machine storage, hip roof barn + a 100x190 outdoor riding arena and so much more!....\$995,000

449JK7 - 1480 Tampico Rd. West of Glasgow - 20.17 acres. Freshly painted 2 large bdrms, 2 baths including a master bath, loft area, large open kitchen/living room with a fantastic view of the Milk River bottoms. Some amenities include a mud room, pantry, walk out basement with a large family room, hot tub area, Barn & corrals. Abundance of wildlife hunting in the area + more!....\$350,000

FARM / RANCH, RESIDENTIAL, INVESTMENT, COMMERCIAL, RECREATIONAL

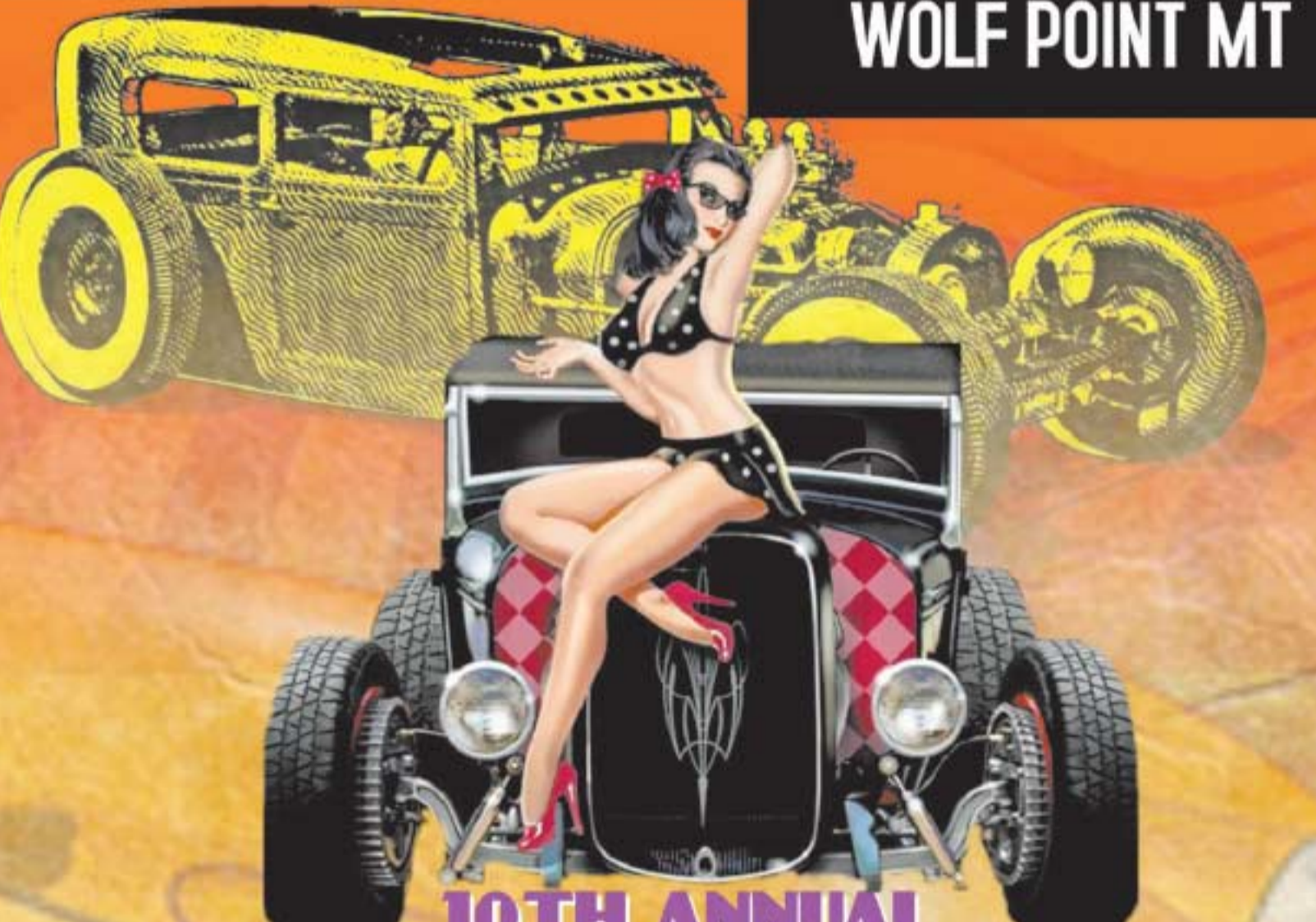
RE REALTOR **EQ** EQUAL HOUSING OPPORTUNITY

Deb Henry (Broker) 406-263-2273
Don Elletson (Sales) 406-263-0248
Jarrell Schock (Broker) 406-480-5500

Office: 406-228-2273 • Fax: 406-228-2644
mrr Realty1@gmail.com
www.MissouriRiverRealty.com

GRI
The Mark of Excellence

JUNE 17TH 2017 MARVIN BROOKMAN STADIUM WOLF POINT MT



10TH ANNUAL WOLF CITY RODS AND RIDES CAR AND BIKE SHOW
REGISTRATION SATURDAY FROM 9AM-11AM
SHOW FROM 11AM-2PM
BURNOUT CONTEST

POKER RUN FRIDAY JUNE 16TH FROM 6PM-10PM
REGISTRATION FROM 5PM-6PM AT PRO-TIRE
FOR MORE INFORMATION CONTACT
BEAU GARFIELD 406-480-3308
CHAD HESER 406-650-8575
RANDY PAUTSCH 406-650-7985

LIKE US ON **facebook**
WOLFCITYRODSANDRIDES@YAHOO.COM

WE STOCK TRAILERS TO FIT ALL YOUR NEEDS!
Stock - Horse - Flatbed - Motorcycle - 4 Wheeler - Cargo
BACKYARD SHEDS & MORE
WHY RENT WHEN YOU CAN RENT-TO-OWN

- Secure storage in your back yard.
- No credit check!
- Just first and last months payments.
- Pay the rent for 24, 36, 48, or 60 Months or pay the remaining balance and the building is yours.
- No strings attached.
- Turn in any time or pay off any time with no penalty.
- Extra cost will be incurred with Rent-to-Own.
- Notched 4x6 Skids
- 2x6 Floor Joists
- FREE Delivery (within 30 miles of the sales lot.)**



7 YEAR WARRANTY ON WORKMANSHIP & MATERIALS (Excludes Econo Buildings)
YOU DREAM IT, WE BUILD IT!!
FINANCING IS AVAILABLE



New Line of Dump Trailers, Heavy Duty 2017 IronBull Dump Trailers

5' X 10'	\$4,995
82" X 14'	\$7,395
82" X 16'	\$7,695

Travelong Groundload Stock Trailer
Massive Size Unmeasurable Quality
\$39,990 FET Tax Paid

IF QUALITY AND DURABILITY IS WHAT YOU WANT, TRAVALONG IS WHAT YOU NEED.

Standard Features: 5 Year Warranty, Length 48', Width 102", Height 10'4", LED Lights, Main Frame 6" I beam, Solid Center Gates, Panel Tie loops Jacks: 35k Dual, Rear Gate with Slider, Trap Door Clean Outs, Outside Gate Release, 8' Rear Deck, Air Brakes, Rubber Bumper, 1 Dome Light Per Compartment, Dump Valve, 104" Kingpin to Jack Clearance, 22.5K Air Ride Axles, 255/70R22.5H Tires, PPG Automotive Grade Paint, All Deck has Cleated Rubber Floor, Cleated Rubber over Axles, Spray on Gravel Guard on Undercarriage, 14" Step-In Height in Lowered Position, Exterior Gate Releases, 2 Options for 1st Transition from Rear Compartment: Full Swing, No ramp, 1/2 Width Gate, 1/2 Width Aluminum Ramp, Alley Gates

\$3,990* Down 6-Annual Payments \$7,629.42*

***ON APPROVED CREDIT**

2016 MTI Mirage 29' Snow Sport Auto Trailer, Side escape door, Drop Rear Ramp.
\$12,900

1985 6'x16' Bumper Pull Stock Trailer New Floor
\$2,995

NEW TRAILERS

2017 Mirage Trailer 6' X 12', Rear Ramp \$3,595	2017 Big Tex Mega Ramp system 7,000 lb. Axles \$5,295
3 Nail Marks on Roof 2016 Duralite Aluminum Stock Trailer 25' w/ two Gates, Rear Slider, Escape Door Reg. \$18,900 \$17,900	2017 Mirage Trailer 7' X 14', Rear Ramp \$5,480
2017 Interstate Enclosed Trailer 7' X 16' CALL FOR PRICING	2017 Mirage 7' X 14', Side By Side, For 4-Wheelers & UTVs \$5,695

USED ZERO TURN LAWNMOWERS

TORO

\$2,500-w/bag **In Stock Now**

EDDY BAUER SALES **"Home of the Trailer Doctor"**
237 Eureka Street • Wolf Point, MT
800-554-1322 or 406-653-1322
406-653-1947 after hours

BETTER THAN AUCTION PRICING!

+ Low Rate Financing Available O.A.C.

SPRAYERS

2015 John Deere R4038 sprayer, radio, 9.0L Tier 4 engine, 380/90R46 tires, SS eductor, front fill, 120-ft. booms, 20" nozzle with fence row end nozzles, auto boom level, wheel slip control, boom air purge, HID field lighting, radar. #21471. (1). **CALL**

2014 John Deere R4038 self-propelled, 3000 receiver, SF1 activation, JD section control, radio, 9.0L tier 4 engine, 420/80R46, SS eductor, 120-ft. booms, 15" nozzles, wheel slip control, boom air purge, Xenon HID field lighting. #17485. (4). Was \$335,000..... **NOW \$294,500/F.O.B.**

2014 John Deere 4940 340 hp, AWD, hydrostatic transmission, 120-ft. booms, 1200 gallon stainless steel tank, hydraulic tread adjust, 480/80R50 tires, BoomTrac Pro-5 leveling, hydraulic boom fold, SF1 activation, HID light package, independent suspension, chemical eductor, fence row nozzles, 1085 hours. #21981 (3) **\$268,000**

2013 John Deere 4940 self-propelled, 480/80R50 tires, solution pump, SS eductor delivery system, 120-ft. booms, BoomTrac auto level system, wheel slip control, xenon HID field lights, radar speed sensor, row crop fenders. #21318 (1). Was \$268,000 **NOW \$216,750 CNT/F.O.B.**

2012 John Deere 4940 120-ft., traction control, 20" nozzle spacing, halogen field lights, SS plumbing, row crop fenders, high flow solution pump, traction control, 380/105R50 tires, fence row nozzle right hand, stainless steel, eductor system, fence row nozzle left hand. #21498 (1). Was \$250,000 ... **NOW \$195,000 CNT/F.O.B.**

2009 Case IH Patriot 4420 sprayer, 120', boom leveling, stainless tank, traction control, 15" nozzle spacing, viper pro monitor, 650/65R38 tires, aim command, hid deluxe field lights, luxury cab, electric mirrors, HYD suspension, fence row nozzles, fenders, 2400 hrs. #22494 (1) **\$166,000**

(R) **2005 John Deere 4920** 120-ft., stainless tank, guidance ready, traction control, 15" nozzle spacing, high flow solution pump, 480/80R50 tires, AutoTrac ready, Xenon HID field lighting, boom return to height, fence row nozzles, strainers, full boom breakaway, radar speed sensor, row crop fenders (4), wheel slip control, 3320 hours. #21600. (2). Was \$112,500 **NOW \$97,000 CNT/F.O.B.**

1998 John Deere 4700 90-ft., poly tank, hydraulic tread adjust, traction control, 20" nozzle spacing, 800 gallon tank, on-board air system with marker, fenders, fence row nozzle right hand, 35 gallon foam marker, below horizontal cylinders, radar, 385/85R34 fronts. #22282. (4)... **\$59,000**

2001 Spray-Air 3200 88-ft. pull type, 800 gallon tank, 20" nozzle spacing, chemical eductor. #21972.(3) **\$5,500**

2011 Apache AS1220 self-propelled, 100-ft. booms, poly tank, 20" nozzle spacing, Raven Viper pro auto rate, boom height and section control, AutoTrac. #21310 (1). Was \$170,000 **NOW \$126,000 CNT/F.O.B.**

2013 Summers Ultimate 110-ft., 1650 gallon, chemical clean load system, nozzle bodies only, crossover plumbing package, hitch piece backstop, single electric end nozzle, 3 sensor UC5 Norac, New warranty remains. #10016. (3) **\$70,000**

AIR DRILLS

2015 John Deere 1835 SFP, 41-ft., 4x22" steel press wheels, smooth gauge wheel, 33x15.5 and 31x13.5, electric depth control, transport lowering, rock guards, single shoot, 33-15.5-16.5 flotation tires, 1" tip with roll pin knife, 2015 JD 1910-430 bu. tow between, 3 tank, 4 run stat double shoot, regular meter roller, auger hopper screen, Seed Star cart, 4WD, power beyond standard. #21881. (3) **\$183,500**

2014 John Deere 1835 50-ft., 10" spacing, 1" opener, 4"x22" steel packer with rock guards, SPF (single placement fertilizer opener). #21335 (3) Was \$207,500 **NOW \$178,000 CNT/F.O.B.**

2011 Bourgault 6550ST tow behind tank, 591 monitor, duals, dual fan-1 standard fan/1 high capacity, bag lift, 3 meters, deluxe loading auger, rate adjust. #22408 (1)..... **\$86,000**

2010 John Deere 61' 1830 air hoe drill, 4" spread tip, 10" spacing, 3"x21" semi-pneumatic packer wheels, single shoot, 550# opener on 4-ranks, mechanical depth control, primary hoses blockage warning system w/1910-430 bushel tow-behind air cart, 30,000 acres. #22502 (3)... **\$99,000**

2010 John Deere 1835-1910 41-ft. air hoe drill, 10" spacing, single shoot, 3x21 semi-pneumatic press wheels, smooth gauge wheels, primary hoses blockage warning system, dual main & wing caster wheels, 12.5L15, single shoot seed & separate fertilizer, dual fertilizer delivery tube, mechanical depth control with hydraulic down pressure with 1910 cart. #21441. (2). Was \$125,000 .. **NOW \$90,000 CNT/F.O.B.**

2007 John Deere 1835 50-ft., 12.5" spacing, single shoot, all run blockage, opener on rear three ranks & separate FTL disk, cast fertilizer closing wheel, narrow gauge wheel, 5.5x21" semi pneumatic press wheels, anhydrous fertilizer delivery tube, dual main & wing caster wheels, 12.5L15, mechanical depth control with hydraulic down-pressure with 1910 cart. #21868. (4)..... **\$102,000**

2007 John Deere 1835 12" spacing, 550 lb. trips, 5.5"x21" semi-pneumatic press wheels with rock guards and mud scrapers, all run seed blockage monitor, separate fertilizer placement banders, 1910 air seeder, 8" load upload auger, 6 run double shoot system with variable seed and fertilizer rate, open lid tank indicator. #22361. (4)..... **\$109,000**

2015 John Deere 1830 51-ft., 10" spacing, single shoot, 3"x21" semi pneumatic press wheels, dual main and wing caster wheels, mechanical depth control, JD 1910-350 tow between air cart, primary hoses blockage system. #21872. (2)..... **\$198,000**

2010 John Deere 1830 61-ft., 10" spacing, heavy duty trips, 4" solid press wheels, 2010 JD 1910-350, 350 bushel tow behind cart, 28Lx26 cane & rice tires, Pattison TB2150, 2580 gallon liquid fertilizer tank. #21740. (4)..... **\$135,000**

Concord 4012 40-ft., 12" spacing, single shoot with 2400 air cart. #21686 (4)..... **\$12,500**

60' spreader boom fits Flexi-Coil tank. Consignment. (1) **\$8,500**

2013 John Deere 1895 43-ft., separate fertilizer placement (SFP), smooth gauge wheels, cast fertilizer closing wheel, all run blockage, single shoot anhydrous delivery tube, 1910-550 tow behind air cart. #21514. (3)..... **\$235,500**

2013 John Deere 1895/1910 43-ft. air disc drill, double shoot, smooth gauge wheel, all run blockage, cast fertilizer closing wheel, double shoot air package for tow behind cart, dual fertilizer delivery tube with 1910 430 bushel cart. #21423. (2). Was \$204,000..... **NOW \$185,000 CNT/F.O.B.**

2005 John Deere 1895 30-ft., 10" spacing, double shoot, extended wear seed boot, dry fertilizer delivery tube, narrow gauge wheel, cast fertilizer closing wheel, double shoot air package for tow behind cart, primary hoses blockage warning system for seed & fertilizer, John Deere tow behind 1910 340 bushel tank. #22049. (4)..... **\$99,000**

2004 John Deere 1895 40-ft., separate fertilizer placement (SFP), 10" spacing, extended wear seed boots, dry fertilizer, steel gauge wheel, 1910-430 tow behind air cart, 6-run double shoot, 8" load-unload auger, variable rate seed & fertilizer delivery. #21076. (1). Was \$122,500 **NOW \$105,500 CNT/F.O.B.**

2004 John Deere 1895/1910 43-ft., 10" spacing, double shoot, smooth gauge wheels, extended wear seed boot, tow behind cart, dry fertilizer delivery tube, primary hose blockage warning system, cast fertilizer closing wheel. #21479. (4). Was \$141,000 .. **NOW \$97,500 CNT/F.O.B.**

2016 John Deere 1890 60-ft., 10" spacing, 8 run single shoot system, all run blockage with 1910 550 bushel tow-behind cart. #21857. (3)..... **\$313,600**

2014 John Deere 1835 60-ft., 10" spacing, 4" steel press wheels, 1" carbide tip openers, single placement fertilizer openers, primary blockage, JD 1910-550, 550 bushel 3-tank air cart, 3 season of USF less than 20,000 acres. #21874. (1) **\$216,000**

2012 John Deere 1890/1910 60-ft., 10" spacing, single shoot, all run blockage. #21869. (4)..... **\$192,000**

"Reconditioned" 2011 John Deere 1890 60-ft., 8 run single shoot, 7.5" spacing, primary blockage with 1910, 350 bushel tow behind cart, powered calibration, cane & rice tires, dual wheel caster beam, 10" auger, variable rate. #15455. (2) **\$179,500**

2011 John Deere 1890 42-ft., single shoot air package, 7.5" spacing, 6-run double shoot, dual 31x13.5-15 hi flotation tires with 1910, 350 bushel tow between cart. #22241. (3)..... **\$131,000**

"Factory Updated" 2013 Bourgault 3710 "Drill updated to a Bourgault 3720 no-till disc drill", 60-ft., 10" spacing, updated disc openers and mid row banders, 4.5" packer wheel, 591 monitor, blockage monitor, 6700ST tow behind 700 bushel, 4-tank metering package, dual fan, bag lift system, 650/75R34 tires. #15468. Was \$295,000 ... **NOW \$222,000 CNT/F.O.B.**

"Factory Updated" 2011 Bourgault 3710 independent coulters disc drill, 10" spacing, mid-row banders, 4.5" semi-pneumatic packer wheels, narrow 3" cleaner wheel, double shoot, Bourgault 6550 tow behind 4-tank air cart. #21865. (2)..... **\$120,000**

2009 Bourgault 3710 60-ft., "No-Till" independent coulters disc, 10" spacing, mid-row banders, 4.5" semi-pneumatic packer wheels, narrow 3" cleaner wheel, double shoot, Bourgault 6550 tow behind 4-tank car. #15533. (1). Was \$210,000 **NOW \$141,000 CNT/F.O.B**

TILLAGE

"NEW" Delta S3 32-ft. harrow cart, 5/8"x5" two-way flexible tines. #21837. (1)..... **\$11,950**

"NEW" Delta S3 24-ft. harrow cart, 5/8"x5" two-way flexible tines. #21836. (1)..... **\$9,950**

1996 John Deere 235 21-ft. disk, 3-section folding, 9" spacing. #22036. (3) **\$5,900**

"NEW" Delta S3 36-ft. harrow cart, 5/8"x5" two-way flexible tines. #21834. (1)..... **\$14,000**

"RENTAL RETURN" 2014 Salford I-2141 41-ft. Independent Series cultivator, 3 section, 7.5" spacing, 22"x13 wave on front two - 22"x8 wave on last 3 ranks on 1-5/8" coil shank, 8 bolt 305/70XR22.5 recap truck on main frame 28'-41', Cat IV articulating implement hitch, 31 weights, axle pivot grease bank 3-section. #11219 (3). Was \$99,500 **NOW \$71,500 CNT/F.O.B.**

"RENTAL RETURN" Summers 9J5004 50-ft. vertical tillage, super coulters, ideal for spring tillage, chops residue and slices through layers of soil, promoting root growth and opening soil to allow wet fields to dry. #21697. (1). Was \$75,000. **NOW \$49,000 CNT/F.O.B.**

4WD TRACTORS

2015 John Deere 9570R Cummins QSX15 570 hp engine, 18/6 powershift, 115 GPM dual hydraulic pumps, 5 hydraulic, motor seal drain, Cat. 5 HD draw bar, Command View III cab, active seat, XM radio, HID lighting, 2630 GS3 display, SF1 receiver, SF2 activation, Ethernet switch, dual radar, Firestone IF800/70R38 tires, 4260 lbs. rear tire weights, 1980 lbs. suitcase weights, 400 gallon fuel tank, 90 gallon DEF tank, 175 hours. **5 year 2000 hour JD extended warranty applies.** #21765. (2) **\$389,000**

2016 John Deere 9520R 520 hp, 18/6 powershift transmission, 2630 GS3 display, SF1 receiver, SF2 AT activation, 4600 processor, Ethernet switch, Command View III cab, leather interior, XM satellite, hi-flow hydraulic, five hydraulic remotes, case drain, Firestone tires, premium lighting, tow cable, 210 hours. #22026. (3)..... **\$371,000**

(R) **2012 John Deere 9460R** 442 engine hp., 18x6 powershift, 5 hydraulic with case drain, 800/70R38 dual tires, 6060 lbs. of weights, Command View cab, leather seat, electric mirrors, deluxe radio, HID lighting, 7" color touch display, 1940 hours. #22035. (3)..... **\$239,500**

(R) **2016 John Deere 9420R** 420 hp., 18/6 powershift, 10" color touch display, 4600 processor server, Command View III cab, XM satellite, 13.5L FT4 engine, hi-flow hydraulic system, 1000 independent PTO, Cat. 4 drawbar, 710/70R42 168A8 R1W duals, 710/70R42D rears, premium lighting, ethernet switch R4, leather trim, RH/LH electric Rem adjustable mirrors, dual beam radar sensor, F/Business band antenna, large fuel water separator, motor seal drain, backup alarm, 5 hydraulics, 865 hours. #22249. (1)..... **\$315,500**

1983 John Deere 8850 2600 hours on Cummins 450 hp, Kinze rebuild, 20.8R38 triples, EZ Steer auto steer, consignment. #22393. (1)..... **\$59,000**

(R) = "Reconditioned", CNT = "Cash No Trade", F.O.B. Customer

CONTACT A SALES PROFESSIONAL AT ANY OF OUR FOUR LOCATIONS:



FARM EQUIPMENT SALES
www.fesmt.com *Serving you since 1964*

In Glasgow see
Mike, Wade, Coel or Alex
54272 Hwy 2 East
Glasgow, MT 59230
406-228-2496
(1)

In Plentywood see
Jake
804 East 1st Ave.
Plentywood, MT 59254
406-765-1531
(2)

In Culbertson see
Mike or Luke
21 West 2nd St.
Culbertson, MT 59218
406-787-6201
(3)

In Circle see
Mike, Ole or Don
Hwy 200 East
Circle, MT 59215
406-485-2145
(4)

READY, SET, SALE!



Drive a John Deere Free For A Year

No Interest for 12 Months on Select Lawnmowers If paid in full within 12 months*18a



INTEREST WILL BE CHARGED TO YOUR ACCOUNT FROM THE PURCHASE DATE IF THE PURCHASE BALANCE IS NOT PAID IN FULL WITHIN 12 MONTHS OR IF YOUR ACCOUNT IS OTHERWISE IN DEFAULT.
* OFFER ENDS 5/1/2017 18FOR CONSUMER USE ONLY. INTEREST WILL BE CHARGED TO YOUR ACCOUNT FROM THE PURCHASE DATE AT 17.9% APR IF THE PURCHASE BALANCE IS NOT PAID IN FULL WITHIN 12 MONTHS OR IF YOUR ACCOUNT IS OTHERWISE IN DEFAULT. A SUBJECT TO APPROVED CREDIT ON REVOLVING PLAN, A SERVICE OF JOHN DEERE FINANCIAL, F.S.B. SOME RESTRICTIONS APPLY; OTHER SPECIAL RATES AND TERMS MAY BE AVAILABLE, SO SEE YOUR DEALER FOR DETAILS AND OTHER FINANCING OPTIONS. AVAILABLE AT PARTICIPATING DEALERS. PRICES AND MODELS MAY VARY BY DEALER. VALID ONLY AT PARTICIPATING US DEALERS.



D Series Mowers

MODEL	HP/DECK SIZE	LIST PRICE
D105	17.5HP, 42" DECK	\$ 1,499
D110	19.5HP, 42" DECK	\$ 1,699
D125	20HP, 42" DECK	\$ 1,799
D130	22HP, 42" DECK	\$ 1,899
D140	22HP, 48" DECK	\$ 1,999
D155	24HP, 48" DECK	\$ 2,199
D160	24HP, 48" DECK	\$ 2,349
D170	26HP, 54" DECK	\$ 2,799



X300 Series Mowers

MODEL	HP/DECK SIZE	LIST PRICE
X330	20HP, 42" DECK	\$2,999
X350	18.5HP, 42" DECK	\$3,199
X350	18.5HP, 48" DECK	\$3,599
X350R	18.5HP, 42" DECK	\$4,399
X354	18.5HP, 42" DECK	\$3,799
X370	18.5HP, 42" DECK	\$3,999
X380	22HP, 48" DECK	\$4,399
X380	22HP, 54" DECK	\$4,699
X384	22HP, 48" DECK	\$5,099
X390	22HP, 48" DECK	\$5,399
X390	22HP, 54" DECK	\$5,699
X394	22HP, 48" DECK	\$6,099



X500 Series Mowers

MODEL	HP/DECK SIZE	LIST PRICE
X570	24HP, 48" DECK	\$ 5,999
X570	24HP, 54" DECK	\$ 6,299
X580	24HP, 54" DECK	\$ 7,299
X584	24HP, 48" DECK	\$ 7,499
X584	24HP, 54" DECK	\$ 7,599
X590	25.5HP, 48" DECK	\$ 7,599
X590	25.5HP, 54" DECK	\$ 7,899



Z Trak Mowers Zero Turn Mower

MODEL	HP/DECK SIZE	LIST PRICE
Z335E	20HP 42" DECK	\$2,499
Z355E	22HP 48" DECK	\$2,999
Z335M	20HP 42" DECK	\$2,599
Z345M	22HP 42" DECK	\$2,699
Z345R	22HP 42" DECK	\$2,799
Z355R	22HP 48" DECK	\$3,099
Z375R	25HP 54" DECK	\$3,499
Z525E	22HP 48" DECK	\$3,899
Z525E	22HP 54" DECK	\$3,999
Z535M	25HP 48" DECK	\$4,399
Z535M	25HP 54" DECK	\$4,599
Z535M	25HP 62" DECK	\$4,699
Z540M	24HP 48" DECK	\$4,799
Z540M	24HP 54" DECK	\$5,099
Z535R	25HP 54" DECK	\$5,499
Z540R	24HP 48" DECK	\$5,799
Z540R	24HP 48" DECK	\$6,099
Z540R	24HP 54" DECK	\$6,299
Z540R	24HP 60" DECK	\$6,499



CONTACT A FES SALES PROFESSIONAL TO PURCHASE YOUR NEW JOHN DEERE MOWER TODAY!

GLASGOW: 406-228-2496 SALESMEN: MIKE, COEL, ALEX OR WADE	PLENTYWOOD: 406-765-1531 SALESMAN: JAKE	CULBERTSON: 406-787-6201 SALESMEN: MIKE OR LUKE	CIRCLE: 406-485-2145 SALESMEN: MIKE, OLE OR DON
--	---	---	---

SPRING MOWER SERVICE SPECIALS!

WALK BEHIND MOWERS	D SERIES MOWERS	X300 SERIES MOWERS	X500-X700 MOWERS	Z TRAC MOWERS
				
AS LOW AS \$90.00	AS LOW AS \$160.00	AS LOW AS \$195.00	AS LOW AS \$205.00	AS LOW AS \$175.00
INSPECTION & SERVICE CHANGE ENGINE OIL CHECK MOWER DRIVE BELTS CHECK LINKAGE ADJUSTMENT SHARPEN BLADES CLEAN UNDERSIDE OF DECK	INSPECTION & SERVICE Change engine oil Replace engine oil filter (if equipped) Clean/replace air filter precleaner Replace air filter element Clean engine cooling fans Replace fuel filter Replace spark plugs Clean battery terminals Sharpen Blades Check mower drive belt Clean mower deck Check & level mower deck Check and adjust mower deck belt tension (3-in-1 deck) Check and adjust mower deck spindle brakes (3-in-1 deck)	INSPECTION & SERVICE Change engine oil & filter Replace spark plugs Replace air filter elements, both foam and paper. Replace fuel filter Check mower belt Sharpen Blades Clean underside of deck Check tire pressure Clean engine cooling fans (air cooled) Clean radiator fans (liquid cooled) Tighten radiator clamps (liquid cooled)	INSPECTION & SERVICE Check/tighten clamps air intake & cooling systems Change engine oil & filter Replace fuel filter Check/clean battery & safety systems Lubricate spindles, pivots, & cylinder Change paper air cleaner element Replace spark plugs (X465, X475, X485) Check/tighten loose hardware (2WD) Clean/level mowing deck & check tire pressure Sharpen blades Clean radiator fans, screens & check fan belt	INSPECTION & SERVICE Change engine oil Replace spark plugs Replace air filter elements, both foam and paper Replace fuel filter Check mower belt Sharpen or replace blades Clean underside of deck Check tire pressure Clean engine cooling fans (air cooled)

 FES FARM EQUIPMENT SALES www.fesmt.com Serving you since 1964	CONTACT YOUR LOCAL FES SHOP FOREMAN TO SCHEDULE YOUR SPRING MOWER SERVICE TODAY!	SEE ABE IN GLASGOW 54272 HWY 2 EAST 406-228-2496	SEE BRANDON IN PLENTYWOOD 804 EAST 1ST AVENUE 406-765-1531	SEE BRUCE IN CULBERTSON 21 W. 2ND STREET 406-787-6201	SEE DUSTIN IN CIRCLE HWY 200 EAST 406-485-2145
--	---	---	---	--	---

Northern Prairie Auto Sales

CHRYSLER DODGE // Jeep RAM

TRUSTED BRANDS FROM A DEALER WHO VALUES TOP SERVICE

AMERICA'S
LONGEST-LASTING
PICKUPS*

DRIVE
AND
DISCOVER

TRADE IN
&
TRADE UP

MEMORIAL DAY SALES EVENT

2017 JEEP CHEROKEE TRAILHAWK

NEW
SAVE UP TO
\$5000



Full roof, CD, trailer tow, Comfort Group, Red

2017 RAM 1500 LONGHORN

NEW
SAVE UP TO
\$9000



Leather, trailer brake, loaded, Red

2017 RAM 1500 LARAMIE

NEW
SAVE UP TO
\$8000



RAM boxes, remote, block heater, White

2017 CHRYSLER PACIFICA TOURING

NEW
SAVE UP TO
\$2500 or 0%/60 months



Cloth, block heater, 2nd row Sto-N-Go, White

2017 RAM 1500 LARAMIE

NEW
SAVE UP TO
\$8000



Leather, brake control, remote, block heater, Brown

2017 JEEP GRAND CHEROKEE LIMITED

NEW
SAVE UP TO
\$2500



3.6 V6, blind spot/cross path, Granite

2017 CHRYSLER PACIFICA TOURING L

MSRP \$32,530
SAVINGS -\$1,280
DRIVE AWAY \$31,250*



3.6 L V6, remote, leather, power life gate, Blue

2015 JEEP GRAND CHEROKEE LIMITED

MSRP \$34,600
SAVINGS -\$3,350
DRIVE AWAY \$31,250*



Leather, sunroof, remote start, 50K, Silver

2015 DODGE JOURNEY CROSSROAD

MSRP \$24,025
SAVINGS -\$1,275
DRIVE AWAY \$22,750*



Leather, remote, back up cam, AWD, 18K, Gray

*Drive Away Price reflects applicable manufacturer Capital/trade/rebates. Listed prices are subject to change without notification. Drive Away Price includes customer cash for qualifying buyers only. Not all vehicles equipped the same. Rebates depend on model and approved credit. See dealer for details. Call for special rebate /APR Combos, not all apply. Incentives expire 05/31/2017. See dealer for new incentives effective 06/01/2017.

Call Jack Nelson, Terry Fast or Jason Partridge today!
www.northernprairieauto.com

100 Hwy 2 East, Wolf Point, MT 59201 • (406)653-1160
Monday through Friday 8am-5pm • Saturday 8am-12pm

CHRYSLER DODGE // Northern Prairie Auto Sales RAM Jeep

100 Hwy 2 East, Wolf Point MT 59201 • (406)653-1160 • www.northernprairieauto.com

★ PRE-OWNED INVENTORY ★

2015 Jeep Wrangler Sahara

Leather, hard top, heated seats, remote, 44K, White

SAVE OVER \$2950 OFF MSRP
PRICED BELOW BOOK..\$33,500

2014 Ford Connect

Transit cargo van, 2.5L, I-cyl 6-spd, 64K, White

SAVE OVER \$2900 OFF MSRP
PRICED BELOW BOOK.....\$13,000

2014 RAM 1500 Longhorn Limited

Leather, sunroof, access cover, loaded, new tires, 53K, White

SAVE OVER \$2525 OFF MSRP
PRICED BELOW BOOK..\$34,750

2013 RAM 1500 Laramie

Sunroof, leather, sunroof, RAM boxes, bedliner, 48K, Maroon/Silver

SAVE OVER \$2750 OFF MSRP
PRICED BELOW BOOK.....\$31,750

2014 Jeep Grand Cherokee Limited

3.6L V6, leather seats, nav, power lift, 80K, Black

SAVE OVER \$1575 OFF MSRP
PRICED BELOW BOOK..\$25,000

2013 Ford F-150 Lariat Crew

Back up cam, leather, access cover, V6 Eco, trailer tow, new tires, Maroon

SAVE OVER \$2075 OFF MSRP
PRICED BELOW BOOK.....\$31,250

2014 Town & Country Touring

Leather, DVD, back up cam, power lift gate, 49K, Sandstone

SAVE OVER \$2150 OFF MSRP
PRICED BELOW BOOK..\$21,750

2012 RAM 1500 ST Crew Cab

5'7 box, Chrome Appearance Group, cloth interior, 75K, Black

SAVE OVER \$1250 OFF MSRP
PRICED BELOW BOOK.....\$21,250

Freeform PLASTICS

TANKS



Call Now About All Styles & Sizes Available!

Vertical Tanks - Heavy Duty - 1500 to 6000 gallons

Multi-purpose Liquid Storage Solutions.

Our water and liquid chemical storage tanks are manufactured using the highest quality, UV stabilized polyethylene available on the market today.

Low Profile Tanks - 1620 to 3900 gallons

The Perfect Liquid Storage Solution. Heavy-duty design eliminates the need for steel support hoops.

Available in HD white, or, Gen2 (white exterior, black interior) versions.

We Stock A Variety Of Styles And Sizes - Call Today

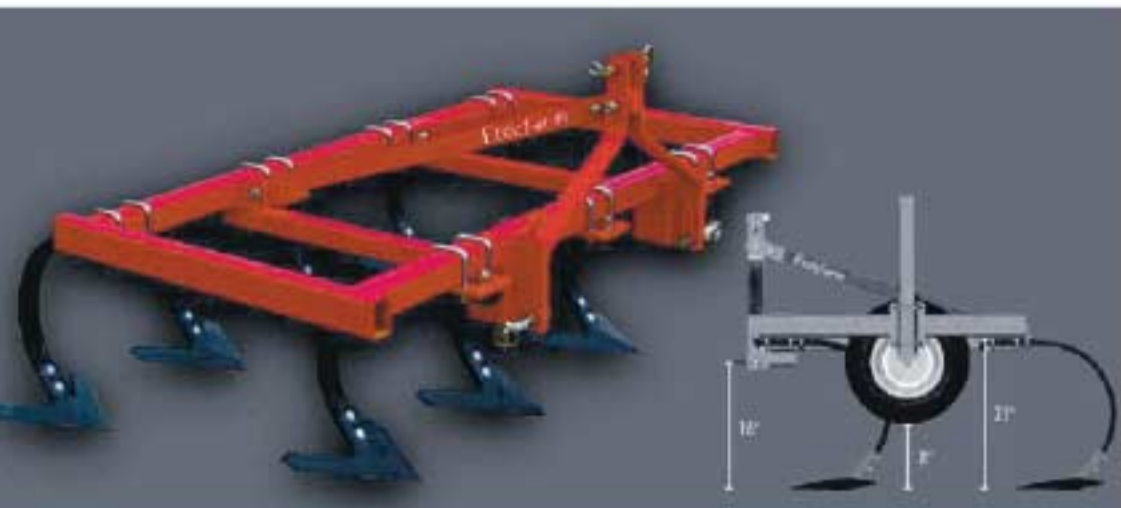
CHEMBINE



— This new product by Freeform Plastics is a **cutting-edge way of mixing your dry and liquid chemicals for your agricultural needs.** The CHEMBINE incorporates all the features of a typical chemical mixer *plus* adds some user-friendly features while dramatically improving in the following areas:

New and innovative knife block design provides a more efficiently shaped cut requiring less effort, faster & more complete drainage/rinsing as well as easier removal of the jugs. Increased agitation - Easy rinse and drain - Improved visibility with all hoses having clear sidewalls. With or without 3" Honda pump.

Freeform 3 pt. CULTIVATOR



Category 1
5'-1/4"-(7 shanks)
standard width,
also in 6'-3/4"
and 8'-1/4"
9-inch shank
spacing with
7/8" shanks

2-1/2" x 2-1/2" x 3/16" wall frame • 3" x 2" x 3/16" cross members

Anything To Do With Grain,
We Handle It

406-487-2216

1-888-255-4790

email: sales@shortlineag.com

website: www.shortlineag.com

Box 1177 • Scobey, Montana 59263

Shortline Ag Inc.



Robert Toavs
Owner & Auctioneer

- 406-392-5799
- Cell 406-480-0433
- rjtoavs@nemont.net

WANTED ITEMS FOR A JUNE CONSIGNMENT AUCTION

If you would like to consign an item Call Robert at 406-480-0433

For a complete Auction Listing visit www.toavspremierauctions.com & watch for posters

Offering: Farm, Ranch, Antique And Estate Services

No Auction Too Big Or Small, We Do Them All!

- With the newest technology in the auction business
- Full service auction from set-up to settlement • Knowledgeable and friendly staff

SCOTT'S TRACK-N-WHEEL

GLASGOW, MT • 406-228-8151

SPEND YOUR TAX REFUND WITH US!



HONDA & YAMAHA FOUR WHEELERS
HONDA & YAMAHA SIDE BY SIDES
HONDA & YAMAHA MOTORCYCLES



HONDA SNOW BLOWERS
HONDA LAWN MOWERS
HONDA GENERATORS
YAMAHA PUMPS
& PRESSURE WASHER
FULL LINE OF ACCESSORIES



STOP IN TODAY!

CHRYSLER DODGE // Northern Prairie Auto Sales Jeep RAM
100 Hwy 2 East, Wolf Point MT 59201 • (406)653-1160 • www.northernprairieauto.com

CONGRATULATIONS GRADUATES

WHAT LIES BEHIND US AND WHAT LIES BEFORE US
ARE TINY MATTERS COMPARED TO WHAT LIES WITHIN US
- RALPH WALDO EMERSON

2017 JEEP CHEROKEE TRAILHAWK



- 3.2 V6
- 9-speed auto
- trailer tow
- full roof
- comfort group

GRADUATION PRICE.....\$35,038*



Call Jason TODAY!
(406) 653-1160

*Graduation Price reflects applicable manufacturer's suggested retail price. Dealer prices are subject to change without notice. Graduation Price includes customer cash for qualifying buyers only. See dealer for details. Incentives expire 05/31/2017. See dealer for new incentives effective 06/01/2017.

NEMONT WEEDBUSTERS

Offering

- Aerial Spraying • Ground Spraying
- Liquid Fertilizer • Chemical Sales

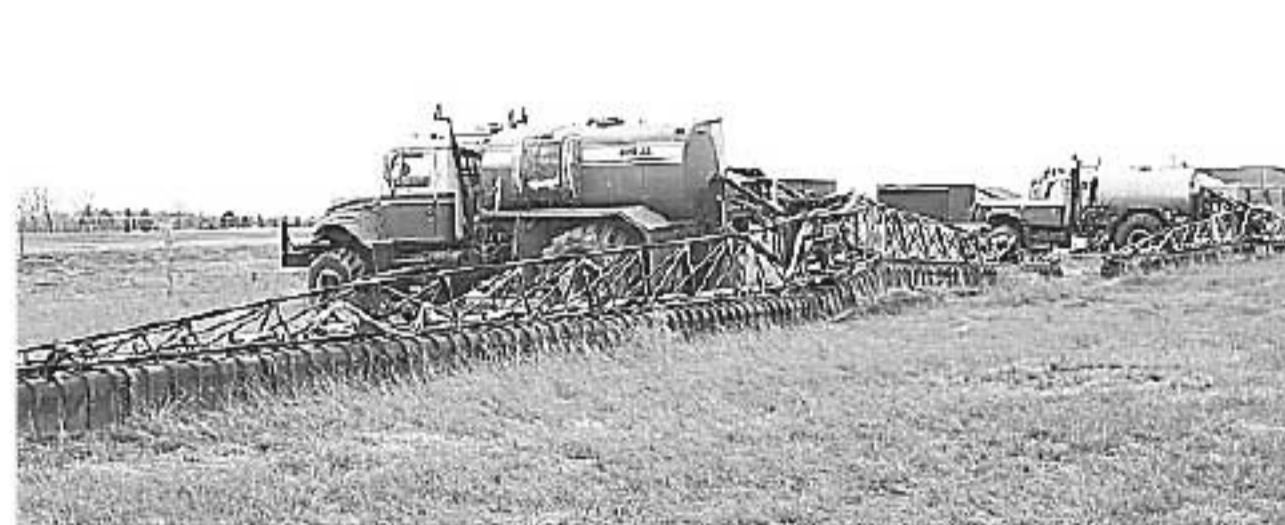


We offer aerial application with several airplanes **READY TO GO!**
 Aerial Application is now available in Richey, Glasgow & Wolf Point areas
 *No Crop Damage Due To Wheel Tracks
 *No Chemical Tie-up Due To Dust

WE CAN SPRAY IN WINDY CONDITIONS WITH OUR AG SHIELD SPRAYERS!

Featuring

- Ground Following System (GFS) for accurate spraying height
- Mounted on Lorai Floater Trucks for Less Soil Compaction
- Auto Steer
- Auto Boom Shut Off



NEMONT WEEDBUSTERS
 Contact Kendall Johnson
 406-653-1740

Visit us on the web
www.theweedbuster.com

Congratulations, CLASS OF 2017!



Planning for a "Major Life Event"?
We can help! It's what we do!

ATM Locations

Credit Union Lobby Open 24 hrs, 7 days a week
 Horseshoe Bar, Oswego

We will be closed Monday, May 29th in observance of Memorial Day



217 3rd Avenue South
 Wolf Point
 406-653-2880



FARM AND RANCH APPRAISALS & Certified Market Analysis reports. Fee and trust land; Call Bethany Toews at 406-696-2769 or 406-525-3746 12p

FOR SALE: 2008 4 Seasons Nash Travel Trailer made by Northwood, Model 22H, includes equalizer hitch, \$8,000; Call 406-942-2501 12p

FOR SALE: 1963 International 1600 truck 16' box, hoist and stock rack; 300 gallon fuel tank and stand; #70 IHC 3 pt. snow blower; Call 406-385-7810 11p

D&G SPORTS & WESTERN

MEMORIAL DAY SALE

Closed Monday, Memorial Day

All Fishing Rods & Reels
15% OFF



YETI STAINLESS STEEL RAMBLERS

20 oz. \$22.99 • 30 oz. \$29.99
 Colster \$22.99 • 10 oz. \$14.99
 18 oz. Rambler Bottle \$22.99
 36 oz. Rambler Bottle \$37.99
 64 oz. Rambler Bottle \$52.99



All Men's, Ladies & Kids Summer Sandals



15% OFF

All Men's & Ladies Summer Shorts & Capris



20% OFF

ALL Crank Bait

15% OFF



OLD TOWN KAYAKS & OCEAN KAYAKS

CARLISLE PADDLES & EXTRASPORT KAYAK VESTS



Vapor 10 \$399⁹⁹ Heron 9XT \$499⁹⁹ Vapor 10XT \$599⁹⁹ Dirigo 106 \$729⁹⁹ Loon 106 \$899⁹⁹ Capar \$699⁹⁹ Tetra 10 \$749⁹⁹ Venus 10 \$599⁹⁹

Open Monday-Saturday 8:30 a.m. - 5:30 p.m.

FREE Gift Wrapping

215 4th St. S. • Glasgow, MT • 228-9363

FARMERS UNION CARRIERS



- **Freight services**
 - Grain/fertilizer Hauling (Available Auger and sweep)
 - Refined fuel/propane (min. 8,500 gal.) - 53' dry van freight (23 ton max)
- **Wholesale tire/tube sales** (customer must provide own tire/tube installations)
 - LT/Passenger/Large and small Ag - Most brands and styles available
- **Semi-truck & trailer service and repair** (Certified Mechanic)
 - Complete repair & diagnostic capabilities - Annual DOT Inspections
 - All makes and models - Laser Alignments
- **Propane services** (Fully CTEP certified technicians)
 - Retail bulk propane deliveries (100 gal min. on call in) - Tank leasing/sales
 - System installations (inside and outside) - Parts and accessories

ALL REPAIR WORK GUARANTEED!

Farmers Union



CALL Neil or Jason **406-487-2660**
 504 Chapman Rd. (East of County Shop), Scobey, MT
 Certified Diesel Mechanics

CUSTOM MANURE SPREADING + CORRAL CLEANING



SCHEDULE YOUR CLEANING

CALL BUSTER - (406) 762-7025

MAY IS MAYTAG MONTH

UP TO **\$600**

BY MAIL WITH PURCHASE OF A SELECT MAYTAG® KITCHEN APPLIANCES*

MAYTAG

JOIN US FOR THE MONTH THAT WILL MAKE YOUR DAY

*See sales associate for rebate form with complete details. Only valid at participating Maytag brand retailers. Rebate in the form of a Maytag brand prepaid card by mail. Additional terms and conditions apply ©/TM © 2017 Maytag. All rights reserved. To learn more about the entire Maytag brand line, please visit with maytag.com NCP-22425. Printed in the U.S.A. 3/17. Form No. MM17050154SNCP

MARKLE'S WAREHOUSE

FURNITURE ★ TELEVISIONS ★ APPLIANCES

1 BLOCK WEST of the UNDERPASS - GLASGOW, MT • 406-228-4012

Glasgow Stockyards, Inc. Summer Schedule

- MAY**
- 25 THURSDAY - ALL CLASS CATTLE AUCTION
- JUNE**
- 1 THURSDAY - ALL CLASS CATTLE AUCTION
 - 8 THURSDAY - COW/CALF PAIR SPECIAL AND ALL CLASS CATTLE AUCTION
 - 9 FRIDAY - "OH WOW" DEADLINE FOR THE 1ST VIDEO AUCTION OF 2017
 - 15 THURSDAY - ALL CLASS CATTLE AUCTION
 - 22 THURSDAY - ALL CLASS CATTLE AUCTION
 - 26/27 MONDAY/ TUESDAY - NORTHERN LIVESTOCK VIDEO AUCTION EARLY SUMMER SPECIAL
 - 29 THURSDAY - BIG PRE 4TH DRY COW AUCTION
- JULY**
- 6 THURSDAY - NO AUCTION
 - 13 THURSDAY - ALL CLASS CATTLE AUCTION
 - 20 THURSDAY - NO AUCTION
 - 24/25/26 MONDAY/ TUESDAY/ WEDNESDAY - NORTHERN LIVESTOCK VIDEO AUCTION SUMMERTIME CLASSIC
 - 27 THURSDAY - ALL CLASS CATTLE AUCTION

Linda & Mark Nielsen, Owners
Iva Murch, Manager • 263-7529
Dean Barnes, Yard Manager • 263-1175
Ed Hinton, Auctioneer • 783-7285

GLASGOW STOCKYARDS INC.
1946-2017

406-228-9306
P.O. Box 129 • Glasgow, MT 59230
gsi@nemont.net
www.glasgowstockyards.com

71 Years of Great Service to Northeast Montana

Please call in consignments so buyers can be notified

FOR SALE: 1986 Z28 Camaro Iroc-Z, 42,866 original miles; Call 406-654-2843 11c

FOR SALE: 6 1/2' King Kutter blade disk combo for 3 pt. \$700; 6' scrapper/blade for 3 pt. \$300; 1,000 gallon hard H2O plastic tank \$500; Call 406-254-1274 or 406-860-4186 10c

Reach Northeast Montana With An Ad In The **FREE TRADER** ALWAYS OPEN

Place Your Ad by:
Phone: 1-406-653-3344 or Fax: 1-888-624-1925
Mail: 232 E Johnson St., Wolf Point, MT 59201
email: freetrader@nemont.net
www.freetradermont.com

FOR SALE: Vern's MFG portable metal adjustable loading chute, with one panel rack, used once, \$2,800; Call 406-783-7847 10c

The FREE TRADER is not responsible for any typographical errors to any ad. We will re-run any/ or part of an ad free of charge with the corrections at our discretion. We will not pay for any ad corrections by any other media.

FOR RENT

- Porta Potties
- Conex Storage Containers Rentals
- Rolloff - 14yds to 28 yds
- Garbage Service Door-to-Door

T&R Trucking

Glasgow
Phone 406-228-8746
Fax 406-228-8749
garbage1950@yahoo.com

CONGRATULATIONS TO ALL GRADUATES

Steve's Auto & Stuff/Bail Bonds

"It's all in the DETAILS"

SALES CONSIGNMENTS • BUY & TRADE

430 HWY 2 in Wolf Point, MT
CALL STEVE: 406-650-2222 or 406-653-2211
Or e-mail sharada@nemont.net

If water runs through it... **WE DO IT!**

Licensed and Insured
15 Years of Experience

PLUMBING Innovations, Inc.

David Pederson, Master Plumber
iplumbmt@gmail.com • (406) 653-3374
PO Box 338, Wolf Point, MT 59201

CATTLEMEN: 2016 Corn almost here. Buy it out of the field or we store and take it as you need it. Located South of Vida; Call Brett Schillinger 406-974-1434 or Jerry Schillinger 406-974-2478 c/o

FOR SALE: Twine 25 new and 12 partial balls NH440 for 3x4x8' baler, \$750; New MF2170 baler pkp parts, 13 wrappers, 23 fingers, etc \$1,100 value - make offer; Call 406-783-7847 9c

FOR SALE: Steel wind-break, Free-standing panels, Free-standing windbreak, Bextra hay saving bale feeders, & Fair Mfg. Bale Processors, Grenora ND; Call 701-694-3620 c/o

WANTED: 6-12 ft. drag /chain harrow, square baler with an engine in field ready condition, self-catching squeeze chute with an end gate that is NOT run by a rope; Call 701-339-8748 10p

Congratulations Graduates

Take a little bit of home with you!

Debit Cards allow you to access your Western Bank account from wherever you are.

Closed Monday, May 29th in observance of Memorial Day

Western Bank of Wolf Point

111 3rd Ave S., PO Box 638
Wolf Point, MT 59201 | 406-653-5500
www.westernbankwp.com

RIMROCK DENTAL CLINIC

Formerly Mintz Family Dental Clinic. Awesome dental care that is made to last. Friendly comfortable office. All types of dental care provided at this location in Glendive since 2011.
406-377-2303

BUYING HORSES: A home for every Horse, Call 406-650-8879 or 406-650-3679
11o

FOR SALE: Registered Red Angus Yearling Bulls; Call LeRoy Wiseman 406-367-5224
10p

FOR SALE: 7" x 46" Sakundiak Auger, 20 HP Onan engine, plumbed for hydraulics; Call 406-486-5769
c/o

VITAFERM Cattle Mineral & Supplements: Mineral tubs & loose mineral, Protein tubs with mineral, go to biozymeinc.com for more information on products; Call Buster @ 406-762-7025 for pricing and availability. c/o

FOR SALE: Two J.D. 510 Round Balers, good condition, shedded, newer belts on one, good belts on the other, \$1,500 apiece; 505 36' Melroe tool bar, good shape, \$3,000; Call 406-392-5383
10p

FOR SALE: 2030 John Deere tractor gas engine with 37 JD loader 3 pt. hitch and 550 PTO; JD 11 3pt. cultivator; JD 503 3pt. mower; 3pt. Demco sprayer with 30' booms and 80 gal poly tank, like new and always in shed; Call 406-650-8630
10o

FOR SALE: John Deere 9400 tractor 9980 hrs. Overhauled at 8820 hrs. \$59,000; Bourgault 5710 34 foot air seeder with 5350 three compartment tank 140-70-140 split \$31,000; 1969 D600 tandem axle tag grain truck with roll tarp \$6,900; Call 406-525-3231
11p

FOR SALE: JD 7820 Deluxe Cab, 175 HP, MFWD with TLS, 20 speed PQ, New 746 SL Loader Mechanical Joystick Multi Couplers, 8 Bucket, Grapple, Hood Guard, Fenders, New front tires, Rear 75% 480/80R46, Snap on duals, Weights, 3point Quick Attach, Fully Serviced, 3264 Hours, Kept inside, Left Hand reverser, can deliver, Excellent Condition, \$120,000; Call Craig 406-390-4755
8o


FOR SALE: 1994 Ford Tractor Bidirectional, equipped front end loader, grapple parts, New Holland swather, 16' head, tires 72%, overhaul 300 hours, good shape; 1978 GMC 2 1/2 Ton Truck, 18' Grain Box & Hoist, good tires, recent overhaul on motor; 2 Powder River Cattle squeeze chutes; 1994 Yamaha 400, 4 wheeler, low miles, \$1,500; 3 Saddle Horses - Team Ropers Dream; Call 406-680-7488
9o

RANCHETTE FOR SALE



County home in Wolf Point, MT. 3 bedrooms, 2 1/2 bathrooms. The kitchen has burgundy granite, stainless steel appliances and burgundy colored quartz café style counter tops and custom made oak pantry. Property has 20 +/- acres. Great fishing and recreation! #1817
Asking \$275,000 • Call Ted 406-650-7325

FOUR BUTTES SUPPER CLUB




Located 10 miles West of Scobey in Northeast MT. This turnkey established business included all fixtures, pool table, jukebox and PA System. Four Buttes Supper Club has a full liquor license and offers beverages and food to repeat and new patrons daily. The dining area has seating and a salad bar station. This is a great opportunity to own/operate your own business and be your own boss. #1815
PRICE REDUCED \$225,000 • Call Carla 406-650-8533

SUBS & SUCH



Established turnkey business located on prime HWY 2 frontage in Wolf Point MT. This Restaurant offers a fresh alternative to fast food. It is a sandwich and taco business that is busy year round. The land, building, fixtures, equipment, menu and clientele would be yours to work and enjoy. #1818
ONLY \$155,000
Call James 406-650-7840

RENTAL OPPORTUNITY



114 Custer St, Wolf Point
Property consists of two houses, each with an upstairs and downstairs apartment. The apartment in one unit is best suited as a bachelor apt, it needs some structural rework. The other basement apt. has been reworked as a very functional 1 bedroom apt. Both the main floor apartments are modern, and fully furnished, to include some furniture and beds. Property income generates approximately \$2,400 a month in rental income. Units have minimal vacancy rate. #1816
\$104,000 • Call Ted 406-650-7325



AGLAND REALTY

406-653-1377

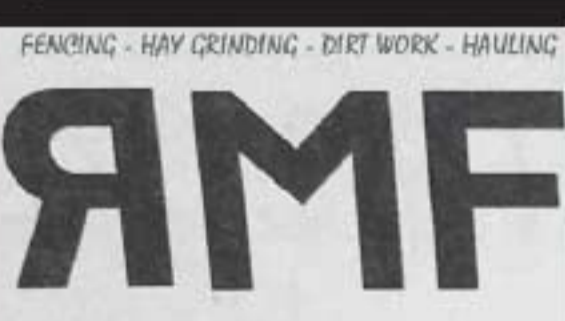
LIGHTFOOT VETERINARY SERVICES



Kelly C. Lightfoot, DVM
Shawn Davidson, DVM
Marshall MacDonald, DVM
Scobey, Montana • 783-5201 or 783-7394
Hours - 9:00a.m. to 5:30 p.m.
MIXED ANIMAL PRACTICE & WELL-EQUIPPED CLINIC
Ultrasounding, semen testing, equine surgeries and dentistry with power float, x-rays, small animal surgeries, Pet Food, Medical Supplies, Equine Tack, Purina Equine Feed, and Vaccines.

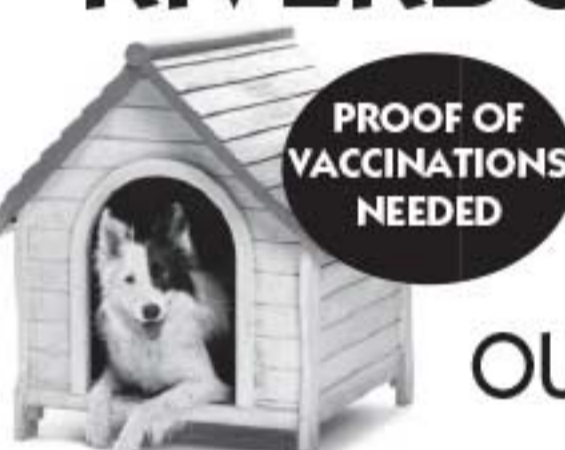
Rocky Mountain Fencing & Haygrinding Services

COMPETITIVE PRICING MULTIPLE SCREEN SIZES



CALL Cy 406-223-6671 or 406-769-2298

RIVERBOTTOM KENNELS



PROOF OF VACCINATIONS NEEDED
We will board your dog overnight or while you are on vacation.

OUTSIDE RUNS • INSIDE KENNELS

CALL 406-525-3072 or cell 406-480-2731
LARRY & EARLENE DEMPSEY

Located south of Wolf Point on Hwy. 528, 2.7 miles west of Harry's on south side of Hwy.

"dinner on the Green"

Wolf Point Airport Golf Club
Friday night - June 23, 2017
Complimentary Wine 6:00 pm
Dinner at 7:00 pm

Steak & Shrimp Dinner
\$40 a person

Advanced Reservations Needed!
Seating limited to first 150
Open to the Public!

Tickets available
at the Golf Course,
& NEMBS Foundation Directors

Or Call Beth:

768-6128/bpickthorn@nemhs.net

NEMHS Charitable Foundation



All profits from the evening go towards new medical equipment for NEMHS

In Celebration of 20 years of the Hospital Benefit Golf Tournament, the NEMHS Foundation is hosting a fun outdoor dining experience! Open to the public, Reservations Required



Being there is why I'm here.

Nathan M Lee, Agent
98 US Hwy 2 East
Glasgow, MT 59230
406-228-4329
nathan.lee.tfti@statefarm.com

Whether you need a question answered, a problem solved, or a claim reported, my job is to make it happen.

Like a good neighbor, State Farm is there.®
CALL ME TODAY.



GET READY for SUMMER SERVICE SPECIALS!

\$39.95 Works Special

Includes: Oil Change (5 quarts)

- Tire Rotation • Brake Inspection • Top Off Of Washer Fluid
- Coolant Check • Brake Fluid Check • Battery Check Inspection

\$9.99 Wiper Blades. Set of two Premium blades. Free Installation

11% off
All Batteries
Free Installation

20% off
Transmission Fluid
Service Change

20% off
Brake Pads and
Install Labor



101 Anaconda St
Wolf Point • 406-653-1350
www.foxfordwolfpoint.com



The Honda Spring Savings Event

SAVE UP TO \$100



Plus receive One Additional Year to Standard Warranties on all new Honda HRX, HRR & HRS lawn mower models, March 1 - May 31.†

Honda. A Cut Above The Rest!

SAVE \$100
\$699* YOUR PRICE
SUGGESTED RETAIL \$799**

5 YEAR REGULAR
+ 1 YEAR EXTENDED
6 YEAR†
Manufacturer's Warranty!
Through May 31



- HRX217K5VYA**
- Honda Exclusive Select Drive™ Speed Control System
 - 4-in-1 Versamow System with Clip Director® – mulch, bag, discharge or leaf shred with no tools required!
 - Roto-Stop® Blade Stop System—Stops the blade, not the engine!
 - MicroCut® Twin Blades with four cutting surfaces
 - Limited Lifetime NeXite® Deck Warranty

SAVE \$80
\$499* YOUR PRICE
SUGGESTED RETAIL \$579**

3 YEAR REGULAR
+ 1 YEAR EXTENDED
4 YEAR†
Manufacturer's Warranty!
Through May 31



- HRR216K9VLA**
- Electric Start with automotive-style key start!
 - MicroCut® Twin Blade System for superior mulching and bagging
 - Adjustable Smart Drive provides variable speed control under all mowing conditions
 - Honda's Premium Residential GCV160cc Engine

SAVE \$80
\$399* YOUR PRICE
SUGGESTED RETAIL \$479**

3 YEAR REGULAR
+ 1 YEAR EXTENDED
4 YEAR†
Manufacturer's Warranty!
Through May 31



- HRR216K9VKA**
- MicroCut® Twin Blade System for superior mulching and bagging
 - Adjustable Smart Drive provides variable speed control under all mowing conditions
 - 3-in-1 System with ClipDirector® for mulching, bagging or discharging versatility
 - Honda's Premium Residential GCV160cc Engine

Honda Generators. Power You Can Trust.

SAVE up to \$500!

SAVE \$150.95
\$999* YOUR PRICE
SUGGESTED RETAIL \$1149.95**

- EU2000i**
- 2000 watts max. (16.7A) of Honda Inverter 120 AC Power
 - Super quiet- 53 to 59 dB(A)
 - Lightweight (less than 47 lbs.)
 - Parallel with another EU2000i for additional power
 - 3 Year Honda Warranty

SAVE \$200.95
\$1499* YOUR PRICE
SUGGESTED RETAIL \$1699.95**

- EG4000CL**
- 4000 watts max. (33.3/16.7A) 120/240V
 - Honda-exclusive DAVR (Digital Auto Voltage Regulation)
 - Honda GX270 commercial engine
 - Protected by Honda Oil Alert®
 - 125V GFCI Outlet Protection
 - 3 Year Honda Warranty

SAVE \$330.95
\$1999* YOUR PRICE
SUGGESTED RETAIL \$2329.95**

- EU3000is**
- 3000 watts max. (25 A) of Honda Inverter 120VAC Power
 - Convenient electric start
 - Eco-Throttle—Runs up to 20 Hr on 3.4 Gals of Fuel
 - 12v-12A DC output
 - Power for RV's including 13,500 BTU AC and basic home backup power
 - 3 Year Honda Warranty

SAVE \$500.95
\$3999* YOUR PRICE
SUGGESTED RETAIL \$4499.95**

- EU7000is**
- 7000 Watts max (58.3/29.1 A) 120/240V of Honda Inverter Power
 - Fuel Injected Honda Commercial Grade Engine—No Carburetor!
 - Push Button Electric Starting
 - Perfect for RV's and Home Backup Power
 - 3 Year Honda Warranty

*Minimum Advertised Price. **Manufacturer's Suggested Retail Price. †The Honda One Year Extended Warranty Event offer is good on all Honda HRS, HRR and HRX Series purchased March 1st through May 31st, 2017. See your Authorized Honda Power Equipment Dealer for full details. Please read the owner's manual before operating your Honda Power Equipment and never use in a closed or partly enclosed area where you could be exposed to odorless, poisonous carbon monoxide. Connection of a generator to house power requires a transfer device to avoid possible injury to power company personnel. Consult a qualified electrician. ©2017 American Honda Motor Co., Inc.

FES FARM EQUIPMENT SALES
www.fesmt.com Serving you since 1964

CONTACT A SALES PROFESSIONAL AT ANY OF OUR FOUR LOCATIONS:

In Glasgow see Mike, Wade, Coel or Alex 54272 Hwy 2 East Glasgow, MT 59230 406-228-2496	In Plentywood see Jake 804 East 1st Ave. Plentywood, MT 59254 406-765-1531	In Culbertson see Mike or Luke 21 West 2nd St. Culbertson, MT 59218 406-787-6201	In Circle see Mike, Ole or Don Hwy 200 East Circle, MT 59215 406-485-2145
---	--	--	---

Dance2Fit

406-672-8417

Wolf Point Fitness; Dance2Fit with Jerrelynn

- Monday, Wednesday and Friday is Dance2Fit at 5:30
- Tuesday and Thursday is Boot Camp at 5:30

At Frontier Elementary School

COST \$3 a class | \$10 for a 5 class punch card

Also doing small group classes for people who prefer to work out in the privacy of their own home, \$20 for an hour workout.

PUNCH CARDS NOW AVAILABLE!
Would make a GREAT Gift!

WHY BE MOODY SHAKE That 800°F!

Wild West Days

Poplar, Mt. June 8, 9, 10, 11
Downtown Poplar

2nd Weekend in June

Thursday: "Color Fun Run"
3:30 pm registration at NEMHS
Community BBQ 6 pm at NEMHS

Friday:
Kids Events start at 10 am
Inflatables, Magician, Petting Zoo, Vendors & Presenters
Horseshoe Tournament
3 pm Registration,
4 pm Start Time,
Call 633-1079 for more info

Saturday:
Community Rummage Sale 9 am - 1 pm
Pie Social 10 am - 2 pm
Parade at 11 am
Rodeo at 2 pm
Arm Wrestling Tournament 4:00-5:30 pm
Weigh-ins, 6 pm Start time
Call 690-4512 for more info

Sunday:
Cowboy Church Service 9 am
Parade at 11 am
Rodeo at 2 pm

The famous
Chamber Burger Stand
OPENS FRIDAY at 10:00 am



RACE IN FOR GREAT DEALS!

NEW VEHICLES



SHOWROOM SPECIAL 2017 FORD FOCUS SEL HATCHBACK

17" MACHINED ALUM WHEELS, REAR VIEW CAMERA, REMOTE START, HEATED SEATS AND STEERING WHEEL

\$20,885 AFTER ALL INCENTIVES
OR 0% FOR 72 MONTHS

\$317 A MONTH, O.A.C. *SEE DEALER FOR DETAILS*



2017 FORD EXPLORER XLT

SPORT APPEARANCE PACKAGE, 20" MAGNETIC 10 SPOKE WHEELS, XLT TECH BUNDLE, BLIS, NAVIGATION, HEATED SEATS, HEATED STEERING WHEEL

\$42,335 AFTER ALL REBATES*

2017 FORD F-150 STX

20" MACHINED ALUM WHEELS, REAR VIEW CAMERA, SPORT CLOTH SEATS, REVERSE SENSING SYSTEM, FOG LAMPS, 110V OUTLET, 6.5' BOX



\$41,850 MSRP

\$950 DEALER DISCOUNT, \$4,750* CC REBATE, \$1,250 TRADE IN ASSISTANCE BONUS CASH

ADDITIONAL DEALER DISCOUNT \$500

FINAL \$34,400

TOTAL SAVINGS OF \$7,450



2017 FORD F-150 LARIAT

5.0L V8, CHROME PACKAGE, NAVIGATION, RUNNING BOARDS, 5.5' BOX, BUCKET SEATS,

UP TO **\$2,000* CASH BACK**



2017 FORD F-150 KING RANCH

KR CHROME PKG., DUAL PANEL MOONROOF, ADAPTIVE CRUISE, 360 DEGREE CAMERA, SYNC CONNECT

UP TO **\$2,000* CASH BACK**



**2017 FORD
F-350 CAB &
CHASSIS XLT**
DUAL REAR WHEEL,
POWER DRIVER SEAT,
RUBBER FLOORS, SOF,
6.2L GAS

\$44,254

AFTER ALL INCENTIVES*



**2017 FORD
F-250 CREW LARIAT**
6.7L DIESEL, LONG BOX,
FULL LENGTH RUNNING
BOARDS. 5TH WHEEL,
REMOTE START, HEATED/
COOLED SEATS

\$60,925

AFTER ALL INCENTIVES*



NEW 2018 NEVILLE

40' ALUMINUM GRAIN TRAILER AIR SEEDER SPECIAL - MILL FINISH, 4" RAISE OVER STANDARD HOPPERS, SHURCO ELECTRIC TARP & TRAPS, PINTLE HITCH, AIR RIDE, MUD FLAP PACKAGE

\$41,850 INCLUDES FET AND SHIPPING



2016 FORD EXPLORER LIMITED
20" POLISHED ALUM WHEELS, BLIS, HEATED/COOLED LEATHER SEATS, 42,000 MILES
\$32,900



**2013 FORD EXPEDITION EL
KING RANCH**
20" WHEELS, DVD HEADRESTS, POWER RUNNING BOARDS, REMOTE START, SUNROOF, 82,000 MILES
\$28,900



2014 FORD F-250 CREW XLT
6.7L DIESEL, LONG BOX, 17" WHEELS, RUNNING BOARDS, HIGH MILES BUT IN EXCELLENT CONDITION, 105,000 MILES
\$32,500



2015 FORD EXPLORER SPORT
3.5 ECO BOOST ENGINE, NAVIGATION, SUNROOF, ONLY 27,000 MILES
\$34,900



2012 FORD F-250 LARIAT
6.7L DIESEL, WESTIN GRILL GUARD, CHROME PACKAGE, 5TH WHEEL, VERY NICE! 86,000 MILES
\$36,900 SAVE \$2,350 OFF NADA RETAIL PRICE



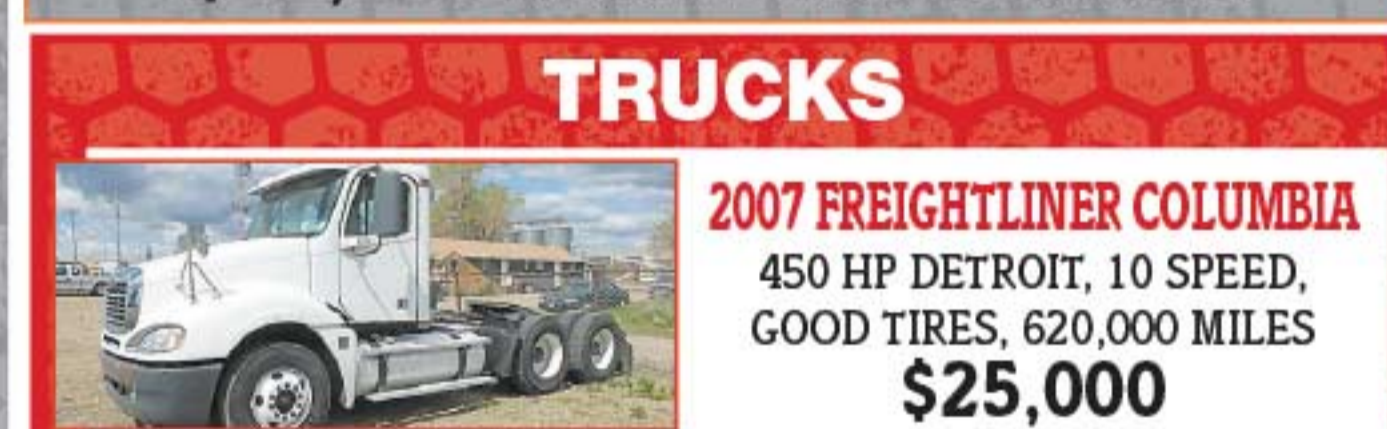
2016 FORD F-150 CREW XLT
5.0L V8, RUNNING BOARDS, 6.5' BOX, POWER SEAT, 34,000 MILES
\$32,900



2013 FORD FUSION SE
ALUM WHEELS, SPOILER, VERY SHARP UNIT! 34,000 MILES
\$13,900



**2016 FORD EXPEDITION
EL XLT**
3.5L ECO BOOST ENGINE, HEATED/COOLED LEATHER SEATS, RUNNING BOARDS, 8 PASSENGER, 24,000 MILES
\$38,900



TRUCKS

2007 FREIGHTLINER COLUMBIA
450 HP DETROIT, 10 SPEED, GOOD TIRES, 620,000 MILES
\$25,000



2011 RAM 3500 BALE BED
11' HYDRABED, DIESEL, MANUAL TRANSMISSION, FRONTIER ONE-PIECE GRILLE GUARD, 57,000 MILES WAS \$30,900
NOW \$29,900

GREAT DEALS

- 1989 FORD F-150 4X4 S-CAB ONLY 137,000 MILES..... WAS \$4,000 NOW \$3,500
- 2002 CHEVY DURAMAX GREY, NEW INJECTORS RUNS GREAT \$10,000
- 2012 F-150 LARIAT, 114,000 MILES \$19,900
- 2008 FORD F-150 XLT, 200,000..... \$10,000
- 2011 FORD F-150 GOLD, 103,000 \$19,500
- 2000 FORD F-150 4X2 \$3,500
- 2005 FORD FREESTAR..... \$5,000
- 2002 FORD TAURUS \$3,000
- 2009 FORD ESCAPE XLT ONLY 97,000 \$8,500
- 2004 FORD ESCAPE XLS, 128,000..... \$4,500

*SEE DEALER FOR DETAILS

VISIT US ONLINE. GO TO: FOXWOLFPOINT.COM • VEHICLES, TRUCK & GRAIN TRAILERS INVENTORY

406-653-1350 • 101 ANACONDA, WOLF POINT, MT

www.foxfordwolfpoint.com • CALL MIKE FOX or PAUL WEMMER

