

AD DEADLINE:

5:00 p.m.

Thursday, May 19thTAKE
ONE

FREE

TRADER

PRST STD
U.S. POSTAGE PAID
WOLF POINT, MT
PERMIT NO. 44
ECRWSSMAILING ADDRESS:
232 E JOHNSON ST.
WOLF POINT, MT 59201CALL: 406-653-3344
FAX: 888-624-1925
EMAIL:
freetrader@nemont.netThe FREE TRADER Published Bi-Monthly Is Mailed & Distributed FREE from
Malta to Bainville and the Canadian Line to Circle, Montana

Vol. 29 No. 9

Connecting Buyers & Sellers For Over 29 Years

May 11th, 2016

READY, SET, SALE!

BUY A HOME
MAINTENANCE KIT
FOR YOUR MOWER,
RECEIVE A
FREE FES HAT!

Drive a John Deere Free For A Year

No Interest for 12 Months on Select Lawnmowers

If paid in full within 12 months*18a



INTEREST WILL BE CHARGED TO YOUR ACCOUNT FROM THE PURCHASE DATE IF THE PURCHASE BALANCE IS NOT PAID IN FULL WITHIN 12 MONTHS OR IF YOUR ACCOUNT IS OTHERWISE IN DEFAULT. *18a FOR CONSUMER USE ONLY. INTEREST WILL BE CHARGED TO YOUR ACCOUNT FROM THE PURCHASE DATE AT 17.9% APR IF THE PURCHASE BALANCE IS NOT PAID IN FULL WITHIN 12 MONTHS OR IF YOUR ACCOUNT IS OTHERWISE IN DEFAULT. * OFFER ENDS 05/02/16 A SUBJECT TO APPROVED CREDIT ON REVOLVING PLAN, A SERVICE OF JOHN DEERE FINANCIAL, F.S.B. SOME RESTRICTIONS APPLY; OTHER SPECIAL RATES AND TERMS MAY BE AVAILABLE, SO SEE YOUR DEALER FOR DETAILS AND OTHER FINANCING OPTIONS. AVAILABLE AT PARTICIPATING DEALERS. PRICES AND MODELS MAY VARY BY DEALER. VALID ONLY AT PARTICIPATING US DEALERS.



D Series Mowers

MODEL	HP/DECK SIZE	LIST PRICE
D105	17.5HP, 42" DECK	\$ 1,499
D110	19.5HP, 42" DECK	\$ 1,699
D125	20HP, 42" DECK	\$ 1,799
D130	22HP, 42" DECK	\$ 1,899
D140	22HP, 48" DECK	\$ 1,999
D155	24HP, 48" DECK	\$ 2,199
D160	24HP, 48" DECK	\$ 2,349
D170	26HP, 54" DECK	\$ 2,799
S240 SPORT	18.5HP, 42" DECK	\$ 2,499



X300 Series Mowers

MODEL	HP/DECK SIZE	LIST PRICE
X330	20HP, 42" DECK	\$ 2,999
X350	18.5HP, 42" DECK	\$ 3,199
X350	18.5HP, 48" DECK	\$ 3,599
X354	18.5HP, 42" DECK	\$ 3,799
X360 (2015)	22HP, 48" DECK	\$ 5,299
X370	18.5HP, 42" DECK	\$ 3,999
X380	22HP, 48" DECK	\$ 4,399
X380	22HP, 54" DECK	\$ 4,699
X384	22HP, 48" DECK	\$ 5,099
X390	22HP, 48" DECK	\$ 5,399
X390	22HP, 54" DECK	\$ 5,699
X394	22HP, 48" DECK	\$ 6,099



X500 Series Mowers

MODEL	HP/DECK SIZE	LIST PRICE
X570	24HP, 48" DECK	\$ 5,999
X570	24HP, 54" DECK	\$ 6,299
X580	24HP, 54" DECK	\$ 7,299
X584	24HP, 48" DECK	\$ 7,499
X584	24HP, 54" DECK	\$ 7,599
X590	25.5HP, 48" DECK	\$ 7,599
X590	25.5HP, 54" DECK	\$ 7,899



Z Trak Mowers Zero Turn Mower

MODEL	HP/DECK SIZE	LIST PRICE
Z335E	20HP, 42" DECK	\$ 2,499
Z355E	22HP, 48" DECK	\$ 2,999
Z525E	22HP, 48" DECK	\$ 3,899
Z525E	22HP, 54" DECK	\$ 3,999
Z535M	25HP, 48" DECK	\$ 4,399
Z535M	25HP, 54" DECK	\$ 4,499
Z540M	24HP, 48" DECK	\$ 4,799
Z540M	24HP, 54" DECK	\$ 4,899
Z540R	24HP, 48" DECK	\$ 6,099
Z540R	24HP, 54" DECK	\$ 6,299
Z540R	24HP, 60" DECK	\$ 6,499

2015 CARRY-OVER SALE

2015 S240 SPORT, 18.5HP, 42" DECK (STK#8765)

WAS \$2,499

SALE PRICE \$2,225

2015 S240 SPORT, 18.5HP, 42" DECK (STK#8804)

WAS \$2,499

SALE PRICE \$2,225

2015 X324 LAWN TRACTOR, 23HP, 48" DECK (STK#8822)

WAS \$4,799

SALE PRICE \$4,300

2015 X324 LAWN TRACTOR, 23HP, 48" DECK (STK#8738)

WAS \$4,799

SALE PRICE \$4,300

2015 X324 LAWN TRACTOR, 23HP, 48" DECK (STK#8753)

WAS \$4,799

SALE PRICE \$4,300

2015 Z255 ZERO-TURN, 22HP, 48" DECK (STK#8730)

WAS \$2,999

SALE PRICE \$2,675

2015 Z655 ZERO-TURN, 24HP, 54" DECK (STK#8866)

WAS \$6,299

SALE PRICE \$5,630



JOHN DEERE



FES FARM EQUIPMENT SALES

www.fesmt.com Serving you since 1964

CONTACT A FES SALES PROFESSIONAL TO PURCHASE YOUR NEW JOHN DEERE MOWER TODAY!

GLASGOW:

406-228-2496 SALESMEN: MIKE,
ROB, COEL OR WADE

PLENTYWOOD:

406-765-1531 SALESMAN:
JAKE

CULBERTSON:

406-787-6201 SALESMEN:
MIKE OR LUKE

CIRCLE:

406-485-2145 SALESMEN:
MIKE, OLE OR DON

SPRING MOWER SERVICE SPECIALS!

WALK BEHIND
MOWERSAS LOW AS
\$90.00

INSPECTION & SERVICE

CHANGE ENGINE OIL
CHECK MOWER DRIVE BELTS
CHECK LINKAGE ADJUSTMENT
SHARPEN BLADES
CLEAN UNDERSIDE OF DECKD SERIES
MOWERSAS LOW AS
\$160.00

INSPECTION & SERVICE

Change engine oil
Replace engine oil filter
(if equipped)
Clean/replace air filter
pre-cleaner
Replace air filter element
Clean engine cooling fans
Replace fuel filter
Replace spark plugs
Clean battery terminals
Sharpen Blades
Check mower drive belt
Clean mower deck
Check & level mower deck
Check & adjust mower
deck belt tension
(3-in-1 deck)
Check & adjust mower
deck spindle brakes
(3-in-1 deck)X300 SERIES
MOWERSAS LOW AS
\$195.00

INSPECTION & SERVICE

Change engine Oil & Filter
Replace spark plugs
Replace air filter
elements, both foam
and paper.
Replace fuel filter
Check mower belt
Sharpen Blades
Clean underside of deck
Check tire pressure
Clean engine cooling
fans (air cooled)
Clean radiator fans
(liquid cooled)
Tighten radiator clamps
(liquid cooled)X500-X700
MOWERSAS LOW AS
\$205.00

INSPECTION & SERVICE

Check/tighten clamps air
intake & cooling systems
Change engine oil & filter
Replace fuel filter
Check/Clean battery &
safety systems
Lubricate spindles, pivots,
& cylinder
Change paper air cleaner
element
Replace spark plugs
(X465, X475, X485)
Check/tighten loose
hardware (2WD)
Clean/level mowing
deck & check tire
pressure
Sharpen blades
Clean radiator fans,
screens
& check fan beltZ TRAC
MOWERSAS LOW AS
\$175.00

INSPECTION & SERVICE

Change engine oil
Replace spark plugs
Replace air filter
elements, both
foam and paper
Replace fuel filter
Check mower belt
Sharpen or replace
blades
Clean underside of deck
Check tire pressure
Clean engine cooling
fans (air cooled)

JOHN DEERE

FES FARM EQUIPMENT SALES
www.fesmt.com Serving you since 1964CONTACT YOUR LOCAL FES SHOP
FOREMAN TO SCHEDULE YOUR SPRING
MOWER SERVICE TODAY!SEE TRAVIS IN GLASGOW
54272 HWY 2 EAST
406-228-2496SEE JIM IN PLENTYWOOD
804 EAST 1ST AVENUE
406-765-1531SEE BRUCE IN CULBERTSON
21 W. 2ND STREET
406-787-6201SEE KAYLEN IN CIRCLE
HWY 200 EAST
406-485-2145

FREE

TRADER

May 25, 2016

LOOK FOR YOUR NEXT



WILBUR-ELLIS®

WOLF POINT - OPHEIM

Agribusiness

We are a full service agronomy location offering; fertilizer, custom blending, spreading, soil sampling, chemical and delivery, high quality seed, and a full precision package. These are complimented with the one-on-one relationship our skilled field specialists develop with every customer we serve.



WILBUR-ELLIS®

Main office number
406-525-2119

Fertilizer Plant
406-525-3109

Branch Manager
Darin Weinberger

406-650-1137
Fertilizer Plant Manager
Jeff Long
406-650-1131

Agronomy Team
Chantelle Fast

406-650-1141
Ryan Wall
406-650-1138

Opheim
Vince Renner
406-390-1907

WE HAVE WHAT YOU NEED FOR WORK OR FOR PLAY

NO PAYMENTS 'TIL JUNE!*



YAMAHA
AUTOMOTIVE AND MARINE



CHAPARRAL
Coachmen

SKEEPER

CALL FOR ALL YOUR IMPLEMENT NEEDS



EMax 22 HST
Mower, Loader

Was \$20,986 • **NOW \$18,632**



Mahindra 1538 HST Cab
Loader, Backhoe

Was \$47,292 • **NOW \$44,392**



mPact XTV
1000L, Hard to Find, XL Bed, Work Horse

Was \$20,299 • **NOW \$17,694**



Mahindra mPower
85 Premium, Cab, Loader, 12 Speed, Synchro Shuttle

Was \$51,985 • **NOW \$47,995**



ATVS/UTVS

2011 Honda Recon TRX 680 FA.....	\$4,969
2015 Hisun 800 ATV	\$8,995
2015 Hisun Sector 550 UTV	\$8,995
2015 Hisun HS 700 UTV.....	\$9,995
2015 Hisun Strike 1000 4-Sector UTV.....	\$15,495



BOATS

2016 G3 Jon 1860 CCJ.....	\$23,495
2016 G3 Anglers Deep V172 FS	\$32,465
2016 G3 V210.....	\$54,625
2016 G3 Suncatcher Pontoon V20 FC.....	\$34,982
2015 G3 Suncatcher Pontoon 326 GT	\$59,875



CAMPERS

2016 Jayflight 22R6	\$15,995
2016 Coachmen Freedom Express 192 RBS ..	\$19,995
2016 Coachmen Freedom Express 292 BHDS ..	\$34,995
2015 Coachmen Chaparral 28 BHS.....	\$29,895
2016 Coachmen Chaparral 390 QSMB.....	\$47,995



USED RECS

1990 Nomad.....	\$5,995
1993 Pinnacle.....	\$9,995
2012 Northshore.....	\$16,995
2012 Keystone Avalanche.....	\$34,995
2007 Keystone Raptor	\$22,995



Introducing Mahindra's mCRD

Low Emissions Engine Technology No Diesel Particulate Filter (DPF) to monitor or replace. No regeneration required. Keep working with no operator involvement.



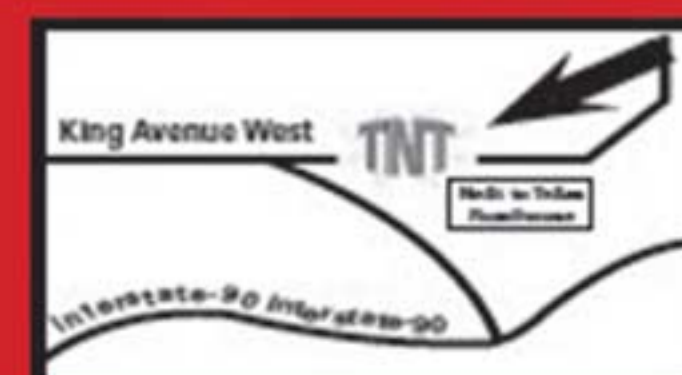
www.tntsuzukimarine.com

1832 KING AVE WEST (Next to Texas Roadhouse) • BILLINGS, MT • MONDAY - SATURDAY 8 a.m. - 6 p.m.

Contact **Bill or Jerome** 406-896-1440 • 1-877-279-8210

(1) O.A.C Rebate amounts vary based on unit. (2) Prices may not include additional options. Dealer to retail all incentives.

See Dealer for details.





THE WOLF POINT PUBLIC SCHOOL

Is seeking applications for the following positions:

CERTIFIED POSITIONS:

Junior High/High School • Data/Curriculum/Testing Coordinator
Instructional Coach/Success for All Facilitator • Activities Director • In School Suspension
3 JH/HS Summer School Teachers • 1 JH/HS Summer School Coordinator
Northside School (Grades 4-6) • Classroom Teachers • Special Education Teacher • Art
• Music • Behavior Learning Specialist • Summer School Teacher
Southside School (Grades PK-3) • Classroom Teachers • (1) Summer School Paraprofessional
• Paraprofessionals • Behavior Learning Specialist

DISTRICT-WIDE: PART TIME POSITIONS

CLASSIFIED POSITIONS:

Substitute Teachers & Custodians in all Schools • Activity Bus Drivers

COACHING POSITIONS:

High School Head Wrestling Coach • Head Cross Country Coach • Assistant Cross Country Coach

Applications are available at the Wolf Point Job Service or Wolf Point School District Office.

Please call **Gary Scott** at 653-5540 with any questions.

All positions are open until filled.

WOLF POINT SCHOOL DISTRICT – BELIEVE, ACHIEVE, SUCCEED!

SEAMLESS RAINGUTTERS

**Seamless
Raingutters**

Lifetime Warranty
restrictions apply

Exclusive
Hidden Hanger
System



**Fascia
Soffit**

Give John a Call: 768-3177 or 1-877-DripFree

Free Estimates << >> Custom Metal Bending



Law Construction – We Service What We Sell

First Creek SEEDS

**SPRING TRITICALE SEED
MILLET SEEDS
HAY BARLEY SEEDS
SUDAN SORGHUM HYBRIDS
ALFALFA & FORAGE SEEDS**

**NATIVE & INTRODUCED GRASS SEEDS
CUSTOM BLENDS
CRP MIXES**

WHAT YOU NEED • WHEN YOU WANT IT

888-757-2892 • SACO, MT • 406-527-3334



HIGH PLAINS MOTORS

JAMES SAYS
“HIGH PLAINS MOTORS HAS AN AMAZING
INVENTORY OF PICKUPS & SUVs!
IF YOU DO NOT SEE IT HERE GIVE MY
SALES PEOPLE A CALL”



JAMES JOHNSON

*SPECIAL CHEVY REBATE



2016 CHEVY TAHOE LT
2ND ROW BUCKETS, NAV, DVD, SUNROOF,
20" WHEELS, 4G LTE. #102453

*SPECIAL GMC REBATE



2016 YUKON XL DENALI
6.2L, DVD, NAV, SUNROOF, 4G LTE, HEAD UP
DISPLAY, POWER BOARDS, 22" WHEELS. #248855

2016 BUICK ENCORE



1.4 TURBO, GREAT FUEL ECONOMY, AWD,
LEATHER, BOSE, 4G LTE. #556004
STOP IN TO TEST DRIVE!

2016 DIESEL COLORADO



ALL NEW 2.8L DURAMAX, CREW CAB, LUXURY &
CONVENIENCE PKGS. JUST ARRIVED #258556
CALL DUSTIN

NEW COLOR FOR 2016



2016 CHEVY CREW LTZ
HEATED & COOLED FRONT BUCKETS, NAV,
4G LTE, BRAKE CONTROLLER #233078

GMC ACADIA



2016 ACADIA SLT
WHITE FROST, NAV, DVD, 4G LTE, TRAILERING,
TRAVEL IN STYLE. #271793

NEW 2016 CANYON



CREW CAB, 4X4, V6, CLOTH, SLE CONVENIENCE PKG.
SPECIAL PRICE #118263
CALL PHIL

*SPECIAL GMC REBATE



2016 CREW K1500
5.3L, HEATED SEATS, PREFERRED PKG, NAV,
BRAKE CONTROLLER, 4G LTE. #276272

*SPECIAL CHEVY REBATE



2016 3500HD CREW LONG BOX
HIGH COUNTRY, DURAMAX, DVD, NAV, 4G LTE.
#153994

CERTIFIED PRE-OWNED



2015 CHEVY EQUINOX
AWD, LT, LT BLUE, XM, 4CYL, 32,000 MILES,
CERTIFIED. #230650 **\$23,499**

CERTIFIED PRE-OWNED



2014 CHEVY TAHOE
WHITE, 5.3 V8, 4X4, DVD, HEATED LEATHER,
SUNROOF. #235781 **NADA \$37,600 HPM \$34,999**

Certified USED VEHICLES



2013 GMC YUKON XL
DENALI, 6.2L, AWD, DVD, ROOF, NAV. #359213
WAS \$45,399 NOW \$43,999

CERTIFIED PRE-OWNED



2014 CHEVY LTZ
RED, CREW CAB, 6'6" BOX, 20" WHEELS, 18,000
MILES, NAV. #299650 **\$39,999**

Certified USED VEHICLES



2013 GMC SLE
BLUE, CREW CAB, 5'8" BOX, 5.3L, ONLY 29,000
MILES. #100684 **WAS \$32,999 NOW \$31,999**

CERTIFIED PRE-OWNED



2016 CHEVY TRAVERSE
BLACK, LT, V6, AUTO TRANS, 8 PASSENGER, RE-
MOTE START, 17,000 MILES. #158277 **\$33,299**

RIGHT PRICED RIDE



2011 CHEVY SUBURBAN
9 PASSENGER SEATING, 5.3L V8, GREAT TIRES.
#245380 **NADA \$23,500 HPM \$21,900**

WON'T LAST LONG



2010 DODGE CARAVAN
BLACK, SXT, V6, AUTO TRANS. #458636
KELLY BLUE BOOK \$10,550 **HPM \$8,500**

JUST ARRIVED



2009 CHEVY COLORADO
BLUE, CREW CAB, 4X4, CHROME WHEELS,
3.7LITER. #123124 **\$15,500**

CALL JAMES' SALES GUYS - KEVIN, DUSTY or PHIL at 653-1310 or 1-800-733-1310

CALL FAST EDDY at 650-8143 or WES SOLBERG at 487-2821 or 783-7608

ON THE WEB - WWW.HIGHPLAINSMOTORS.COM

Make a Beeline to Markle's Warehouse for

A HONEY OF A DEAL



Save a Sweet
15% to 50%
on a store full
of Furniture &
Appliances!

CONTEMPORARY SOFA

\$449

Sleek & Stylish

MATCHING LOVE SEAT
ONLY \$399

5PC DINETTE SET

\$399

Pub Style Table with 4 Bar Stools

POWER LIFT CHAIR

\$699

Heat & Massage

AMANA WASHER

\$429

Extra Large Capacity

AMANA DRYER

\$399

Auto Dry, Energy Saver

AREA
RUGS
\$99

MATTRESS SET
ORTHOPEDIC FIRM

\$399 Queen Size

King...**\$599**

Full...**\$369**

Twin...**\$299**

5PC LIVING
ROOM GROUP

\$999

Plush Casual Style
Sofa, Loveseat (3)
Occasional Tables

All Wall
Decorations
**25%
OFF**

WHIRLPOOL
DISHWASHER

\$399

Hi-temp Wash, Sani Rinse

GE REFRIGERATOR

\$599

18 cu. ft.

AMANA RANGE

\$549

Smooth-top, Self Clean Oven

OVER THE RANGE
MICROWAVE

\$199

1.5 cu. Ft. Capacity
1,000 Watts

ROCKER
RECLINERS

Starting at **\$299**

BIG MAN'S
RECLINERS

Starting at **\$399**

LAMP
SETS
Starting at
\$99

DUAL RECLINING SOFA

\$699

Hi-Back Comfort

MATCHING SNUGLER

\$469

ADJUSTABLE BED
QUEEN SIZE

\$699

MEMORY FOAM MATTRESS

\$999

13" Gel Queen Size

VIZIO
Televisions
**ON
SALE**

"YOUR MONEY SAVINGS STORE"

MARKLE'S WAREHOUSE

FURNITURE * TELEVISIONS * APPLIANCES

HOURS

Monday-Friday
8 a.m. - 5:30 p.m.

Saturday
8 a.m. - 5 p.m.

1 BLOCK WEST of the UNDERPASS - GLASGOW, MT • (406) 228-4012



ANTIQUE, COINS, SPORTING GOODS & GUNS AUCTION

Signs Will
be Posted!

MAY 14TH, 2016

10:00 A.M.

Be on
Time!

MALTA CITY HALL, MALTA, MT.

Lunch will be served by DalRena's



CLIFF RUSTAD, Auctioneer

406-654-1772 Home or 406-654-4053 Cell

BONDED & INSURED

Sale day takes precedent over advertising error. Not responsible for accidents.
TERMS: Cash, Check, Certified Check with proper identification or letter of credit.
No items will be removed until they are paid for.

Glasgow Stockyards, Inc Summer Schedule

MAY 2016 • THURSDAY

12 Koenig Red Angus Bull And Female Auction

Fahlgren Angus Bull Auction

(See Catalogs This Web Site)

Cow/Calf Pair Special and All Class
Cattle Auction

19 All Class Cattle Auction

26 All Class Cattle Auction

JUNE 2016 • THURSDAY

2 All Class Cattle Auction

9 Cow/Calf Pair Special & All Class Cattle
Auction

11 SATURDAY: Gun-Reloading-Ammo-Hunting-
Fishing-Camping-Tool Auction - THIS IS
AN AWESOME AUCTION THAT YOU WON'T
WANT TO MISS!

16 All Class Cattle Auction

23 Pre 4th Dry Cow Auction & All Class Cattle
Auction

30 No Auction

JULY 2016 • THURSDAY

7 Dry Cow Special and All Class Cattle
Auction

14 No Auction

21 All Class Cattle Auction

28 No Auction



Linda & Mark Nielsen, Owners
Iva Murch, Manager • 263-7529
Dean Barnes, Yard Manager • 263-1175
Ed Hinton, Auctioneer • 783-7285

70 Years of Great
Service to
Northeast Montana

406-228-9306
P.O. Box 129 • Glasgow, MT 59230
gsi@nemont.net
www.glasgowstockyards.com

GLASGOW
STOCKYARDS
INC.
1946-2016

Please call in consignments so buyers can be notified

Flying ~S~ Feedlot Cleaning Services

406-485-2110



Ranchers, are your feedlots getting deep in a certain natural resource? If you don't have the time or equipment to move this abundant natural resource, call Flying ~S~. We are located out of Circle, MT. We pride ourselves on being honest, hardworking and having reasonable rates. We currently have two spreader units and a payloader. If you are interested in some work being done, call for scheduling and rates.

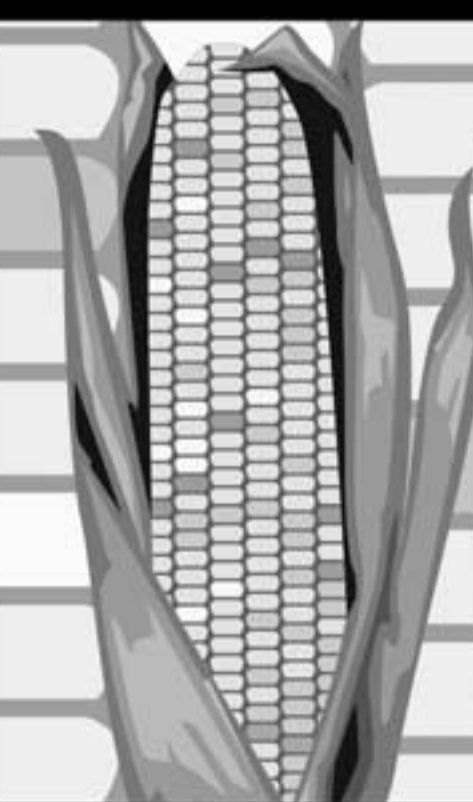
Rex & Kacie Sikveland

406-974-2111 or 406-485-2110

Let'r Fly

FEED CORN FOR SALE Call Jim Dewit

Ft. Peck, Mt • 406-390-3051



LOOKING FOR A GREAT DEAL

WE'RE **OVERSTOCKED** WITH USED VEHICLES

2014 Ford
Focus SE



White, 2.0L, 32,790
Miles, RM0978

2012 GMC
Acadia



Quicksilver Metallic, V6,
AWD, 59,766 Miles, UP2453

2014 Ford F-150
SVT Raptor



White, 6.2L V8, 19,000
Miles, UP2450

2012 Ford F-350
Crew Cab 4WD



White, Turbo Diesel 6.7L V8,
32,800 Miles UP2403

2012 Ford Expedition
EL Limited



Silver, 5.4L V8, 76,524
Miles, UP2427

2011 Ford
Explorer XLT



Ruby Red, V6 3.5L, Ebony
Heated Leather interior
79,300 Miles UP2467

2012 Chevrolet
Silverado 1500 LT



Blue, 5.3L V8, 36,188
Miles, UP2444

2015 Ford
F-150 Crew Cab 4WD



Race Red 3.5L V6,
25,000 Miles, UP2449

2012 Ford
F-150 Lariat



Gold, 3.5L V6, 53,669
Miles, UP2451

2012 Chevrolet
Suburban 1500 LT



Tan, 5.3L V8, 80,265
Miles, UP2437

2014 Ford
F150 XLT



S/Cab, Ruby Red, V6 3.5L,
Gray Cloth interior, 8 ft. box,
clean pickup, only 20,000 Miles
UP2468

2007 Ford
F150 XLT



S/Cab, Red, V8 5.4L, Gray Cloth
interior, 6.5ft box 119,258 Miles
UP2458

2016 Ford
Explorer Limited



Blue, 3.5L V6, 8,000
Miles, UP2446

2013 Ford
F-350 Lariat



White, 6.7L V8 Turbo Diesel,
19,925 Miles, UP2385

2011 Ford F-350
Lariat Super Duty



Red, 6.7L V8 Turbo Diesel,
119,000 Miles, UP2241

HI-LINE FORD

GLASGOW, MT

CALL NORM, JOSH OR JERRY
AND \$AVE-\$AVE-\$AVE • HWY. 2 EAST, GLASGOW, MT

228-2141 or 1-866-528-2141 • WWW.HILINEFORD.NET

CHECK OUT OUR CONVENIENT ACCESS VISA® PREPAID CARD

Access a World of Possibilities

WHEN A CHECKING
ACCOUNT IS NOT
AN OPTION:

- Shopping online without
risking your bank account
- Providing spending money
to students away at school
- Setting aside spending
money and sticking to a
budget
- Reload at your financial
institution
- Fraud protection when
card is lost or stolen*

Available at

**Western Bank
of Wolf Point**

*refer to the cardholder
agreement for the details

111 3rd Ave. S. PO Box 638
Wolf Point, MT 59201 (406) 653-5500
www.westernbankwp.com

MEMBER
FDIC



BRANSON TRUCKING

FOR ALL YOUR HAY
AND LIVESTOCK
HAULING NEEDS!

CALL ZACH
406.650.6397

RIVERBOTTOM KENNELS



We will board your dog overnight
or while you are on vacation.

OUTSIDE RUNS • INSIDE KENNELS

CALL 406-525-3072 or cell 406-480-2731
LARRY & EARLENE DEMPSEY

Located south of Wolf Point on Hwy. 528, 2.7 miles west of Harry's on south side of Hwy.

NOW SERVICING THE FORT PECK AREA!



My name is Sharon Wemmer, and a few months back I was encouraged to get my Real Estate License by some really good friends of mine. It was a very challenging experience, but I am so happy that I took their encouragement and challenged myself.

I come to this business with excitement and the desire to be a part of people finding a place to call their home. My experience through the years in the job force includes finance, retail and great customer service.

I love the lake and the small towns of Eastern Montana and would love the opportunity to show others just what a great place this is to live, play, retire or raise a family.



1122 COUNTRY RD.
NASHUA, MT

2 bedrooms main floor, 2 bonus rooms
upstairs. New sewer lines in house and
to the city line, new furnace with central
air, newly painted downstairs with new
flooring in the kitchen. 1 car detached
garage. Nice size city lot. DON'T PASS
THIS UP AT

\$82,900

FOR
SALE

aglandrealty.com

AGLAND REALTY

CALL SHARON 406-850-8760

Associated Cleaners has the cure!

Extraordinary carpet,
furniture and drapery cleaning.

Call Today!
653-2729

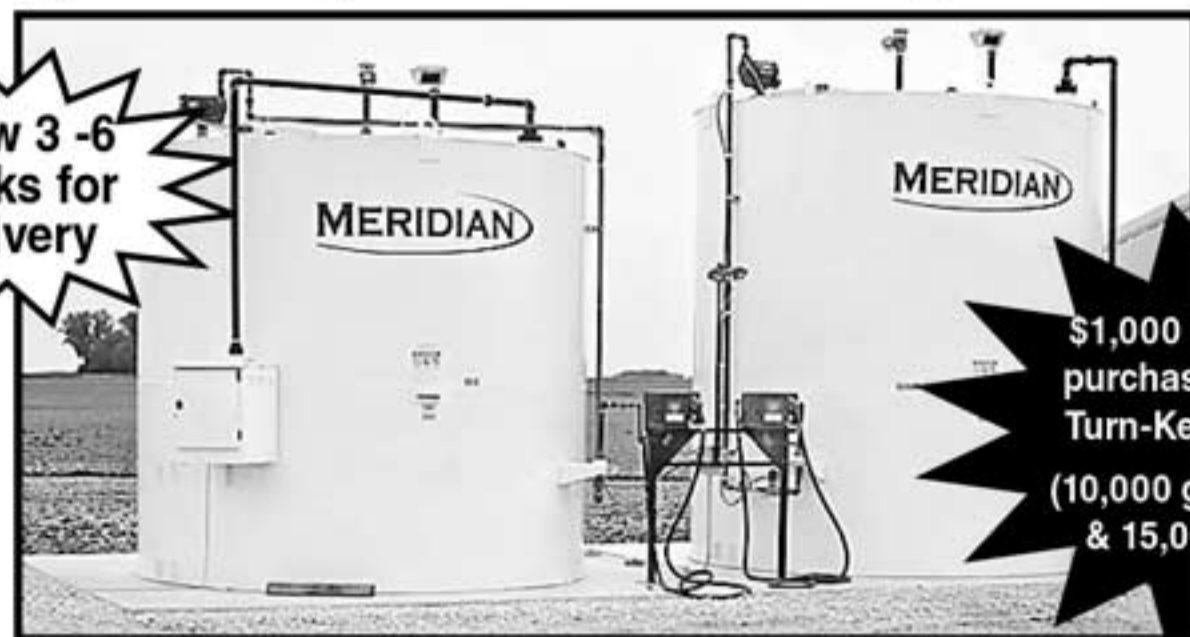


Spring
Cleaning
Fever

Meridian Fuel Tanks

Capacity. Efficiency. Safety.

Allow 3-6 Weeks for Delivery



\$1,000 Rebate! With purchase of qualifying Turn-Key tank system. (10,000 gal, 12,000 gal & 15,000 gal tanks.)

VERTICAL DOUBLE WALL IDEAL STORAGE.

Meridian's UL double wall - 100% containment fuel storage solutions offer excellence in storage versatility. Unlike single wall tanks, this double wall containment system features an "all openings on top design" which eliminates the need for a containment dike. These 4,000 - 20,000 gallon tanks are built with heavy gauge steel construction.

Quality and Workmanship - Meridian is committed to the best double wall fuel tank service and warranty in the industry with a 1 year limited paint warranty.

GREAT FEATURES. GREAT QUALITY.

- ▶ UL-142 TANKS BEAR THE UL LABEL
- ▶ SECONDARY CONTAINMENT
- ▶ LIFTING LUGS
- ▶ PUMP AND ACCESSORY PERCHES
- ▶ PREMIUM POWDER-COAT FINISH
- ▶ ADDITIONAL SPARE FITTINGS
- ▶ EMERGENCY VENTS
- ▶ 24" MAN-WAY
- ▶ INTERSTITIAL SPACE SIGHT GLASS
- ▶ ALL TANKS COME WITH A TANK LEVEL CHART

PUMPS METERS & DISPENSING EQUIPMENT

- ▶ 35 GPM (Diesel ONLY)
- ▶ 20 GPM (Gas or Diesel)
- ▶ Meter (4-digit mechanical meter gallons)
- ▶ Factory Installed ▶ 1" X 35' Hose Reel Upgrade Available

Allow 3-6 Weeks for Delivery



HORIZONTAL
2,000 & 5,000
Gallon
IN STOCK

HORIZONTAL DOUBLE WALL SUPERIOR STRENGTH.

Meridian's UL approved fuel tanks feature the same design, strength and quality standards you have come to expect from all Meridian built products. Meridian's heavy steel components are engineered for dependable durability and maintenance free storage. The double wall tanks are finished in an all weather premium powder-coat finish. Meridian is supported by an unsurpassed service team and a strong dealer network throughout the United States.

PUMPS METERS & DISPENSING EQUIPMENT

- ▶ 20 GPM (Gas or Diesel) for skid tanks - Accessories included 1" X 18' hose, ultra-high flow nozzle & meter for use on 500 to 4,000 gallon tanks.
- ▶ 35 GPM (Diesel ONLY) for skid tanks - Accessories included 1" X 18' hose, ultra-high flow nozzle & meter for use on 4K & 5K gallon tanks.
- ▶ Factory Installed plumbing systems ▶ 1" X 35' Hose Reel Upgrade Available

GREAT FEATURES. GREAT QUALITY.

- ▶ UL-142 TANKS BEAR THE UL LABEL
- ▶ SECONDARY CONTAINMENT
- ▶ DIP STICK FOR TANK LEVEL INSPECTION
- ▶ PREMIUM POWDER-COAT FINISH (SOME MODELS)
- ▶ ADDITIONAL SPARE FITTINGS
- ▶ TANK SADDLES
- ▶ VENTED FILL CAP (500 - 2,000)
- ▶ INTERSTITIAL SPACE SIGHT GLASS
- ▶ LADDER & PLATFORM (4000-15000 TANK SIZES)
- ▶ 3" TOP FILL SYSTEM WITH SPILL BUCKET & BOLT IN MANWAY (4000-15000 TANK SIZES)

CALL TODAY FOR PRICING!

In Stock

Meridian 1260 RT Bulk Seed Tender



- Six, 210 cu. ft. Compartments (totaling a massive 1260 cu. ft.)
- The best, most efficient design to deliver multiple varieties of products to their destinations
- Articulating (170°) Swing Conveyor is equipped with a 10" tube and Meridian's patented 12" cross cleated belt, offering capacities up to 5,000 bu/hr

- Conveyor folds/unfolds automatically with the push of a button, allowing for effortless and precise positioning of the discharge
- Under bin/main belt is a 24" flat belt that only runs after the discharge conveyor has started to prevent over flowing of the hopper; can run independently for unloading into a pit
- This model has a full function wireless remote • Electric Roll Tarp cover • Rear Working Light and **includes optional Power Pack (gas engine and hydraulic pump) & Triple Axle with Air Ride Suspension**

\$104,995 * With Instant Rebate \$5,000 • Includes FET • Only One in Stock



MORE AUGERS ON THE WAY!

- 7" x 39' MERIDIAN AUGER** with 23.5 HP EFI Kohler engine, cold weather muffler, Meridian Mover, electric clutch, plumbed for bin sweep & more RETAIL \$17,285 **SALE \$14,850**
- 8" x 33' MERIDIAN AUGERS** with 26.5 HP EFI Kohler engine, cold weather muffler, Meridian Mover, electric clutch, reversing gear box, light package, shovel kit & more RETAIL \$17,314 **SALE \$14,500**
- 8" x 39' MERIDIAN AUGERS** with 26.5 HP EFI Kohler engine, cold weather muffler, Meridian Mover, electric clutch, reversing gear box, plumbed for bin sweep, light package, shovel kit & more RETAIL \$18,563 **SALE \$15,500**
- 8" x 39' MERIDIAN AUGERS** with 26.5 HP EFI Kohler engine, cold weather muffler, Meridian Mover, electric clutch, reversing gear box, light package, shovel kit & more RETAIL \$17,809 **SALE \$15,000**
- 8" x 39' MERIDIAN AUGER** with 26.5 HP EFI Kohler engine, cold weather muffler, E-Kay Scissor lift mover, electric clutch, 11 gallon gas tank, FABTEC 360 degree electric operated sprout..... RETAIL \$19,822 **SALE \$17,000**
- (1) (2) 8" x 46' MERIDIAN AUGERS** with 26.5 HP EFI Kohler engine, cold weather muffler, Meridian Mover, electric clutch, reversing gear box, light package, shovel kit & more RETAIL \$18,175 **SALE \$15,695**
- 10" x 39' MERIDIAN AUGER** with 35 HP Vanguard, Meridian mover, spring belt tensioner, electric clutch, reversible gear box, light kit RETAIL \$19,000 **SALE \$16,500**
- 12" x 72' MERIDIAN AUGER** with 74" low profile hopper..... RETAIL \$21,700 **SALE \$17,600**
- 12" x 85' MERIDIAN AUGER** with 74" low profile hopper RETAIL \$24,450 **SALE \$19,995**



MERIDIAN
SIMPLY THE BEST!

1,768 bu Multi Purpose
3,265 bu Multi Purpose
4,120 bu Multi Purpose
3,265 bu GrainMax
4,120 bu GrainMax
HOPPER BINS IN STOCK

Standard Features

- Powder coated interior and exterior (ext. only on Grain Max Bins)
- 22" spring loaded remote lid (top)
- Telescopic ladder
- Rack & pinion slide gate
- 24" clearance under gate

Options

- Grain Guard aeration
- Poke hole • Bin ladders
- Manway (bottom)
- Ladder cages
- Manhole (roof)
- Skid foundations
- View Glasses

Steel Bins prices are down! NOW is the best time to buy!



Meridian Fuel Trailers - In Stock

Max - 990 gallon tank, 50 ft. hose, 40 gallon per minute pump, 55 gallon DEF system, aluminum wheels **SALE PRICE Plus \$1,000 Cash Back or \$1,500 Voucher**

Call for detailsRetail \$16,715..... **Sale \$15,995**

Ultra Max - 990 gallon tank, 50 ft. hose, 40 gallon per minute pump, 110 gallon DEF system, aluminum wheels **SALE PRICE Plus \$1,000 Cash Back or \$1,500 Voucher**

Call for detailsRetail \$19,500..... **Sale \$16,995**

Service Max 3 - 990 Gallon tank, 50 ft. hose, 40 gallon per minute pump, **triple axle, generator, welder, air compressor, tool box**, 55 gallon DEF system, aluminum wheels **SALE PRICE Plus \$4,000 Cash Back or \$4,500 Voucher- Call for details** Retail \$38,085 **Sale \$32,295**



Anything To Do With Grain,
We Handle It

406-487-2216

1-888-255-4790

email: sales@shortlineag.com • website: www.shortlineag.com

Box 1177 • Scobey, Montana 59263

Authorized Dealer

MERIDIAN

FODDER & SONS

HAY GRINDING
SERVING NORTH EAST MONTANA'S
LIVESTOCK PRODUCERS

406-781-1197

PARKER HESER

STEVE VINNEDGE



Toavs Premier Auctions

Robert Toavs
Owner & Auctioneer
• 406-392-5799
• Cell 406-480-0433
• rjtoavs@nemont.net

SPRING CALENDAR

**HARRY (JIM) FURHMAN ESTATE AUCTION
WITH GUEST CONSIGNERS - JUNE 18TH**

If you would like to consign an item Call Robert at 406-480-0433

For a complete Auction Listing visit www.toavspremierauctions.com & watch for posters

**Offering: Farm, Ranch, Antique And Estate Services
No Auction Too Big Or Small, We Do Them All!**

- With the newest technology in the auction business
- Full service auction from set-up to settlement • Knowledgeable and friendly staff

SMALL OFFICE SPACE FOR RENT

In Wolf Point,
Located on Highway 2

292 sq. ft. \$350 per month

Utilities Included, Available Now



CALL 406-650-7040

FOR RENT

- Porta Potties
- Conex Storage Containers Rentals
- Rolloff
- 14yds to 28 yds
- Garbage Service Door-to-Door

T&R Trucking



Glasgow
Phone 406-228-8746
Fax 406-228-8749
garbage1950@yahoo.com

MJB

PROFESSIONAL
LAWNS
-N-IRRIGATION

20 YEARS EXPERIENCE
ALL PHASES

- Core Aeration & Thatching
- New & Re-do Landscapes Commercial & Residential
- Irrigation Installation: Rainbird Systems Only
- Seed & Sod Lawns • Trees & Shrubs
- Hardscapes: Boulders, Walls, Arbors, Interlock Paving Stones, Patios, Decks, Fence
- Nightscape Lighting: Commercial Grade
- Water Features • Fertilizing • Winterization
- Spring Turn On & Repairs, Irrigation Coming Soon .. Additional Services!!
- Chemical Application and Treatment

Mike Bowman
406-650-1213
406-392-5569

Licensed • Insured • Bonded

"Dedicated to Quality.....
Committed to Service"



Position Available



Parts Counterman & Sales Position at Carquest

Looking for a hardworking & reliable individual with some computer knowledge.

Auto, Ag, or Truck background would be nice!

Wages depend on experience & knowledge.

Traditional Monday thru Friday schedule or 8 days on & 4 days off option, flexible.

Great Benefits Package includes full individual Health Insurance with Dental & Vision.

401K Retirement Plan-Matching 3%.

Paid vacation & personal/sick days.

Long Term employment offers college plan for kids education.

Great opportunity for some one looking for a good steady career.

Contact Seth at 653-1253, send e-mail to sethvrooman@gmail.com,
or stop by store for an application



Curtiss Farm & Auto
Wolf Point, MT 653-1253



Congratulations,
CLASS OF 2016!



Planning for a
"Major Life Event"?
We can help! It's what we do!

ATM Locations

Credit Union Lobby Open 24 hrs, 7 days a week
Horseshoe Bar, Oswego

*We will be closed Monday, May 30th
in observance of Memorial Day*



217 3rd Avenue South
Wolf Point
406-653-2880



Automotive Diesel Repair on Ford, Chevy and Dodge's

Auto - Truck - RV Repair

CHAPPELL'S



AUTOMOTIVE INC

Aluminum & Steel Welding/Fabrication

54335 Hwy 2 East
Glasgow

Affordable repairs done right...Guaranteed!

406-228-8961 • chappellboys@gmail.com

After Hours: 406-230-2746 • 406-263-5997

2014 Camaro

Garage kept, one owner, 7,500 miles. Six cylinder with the six speed manual transmission. Like new condition. Located in Williston. 406-390-0732

\$19,000 OBO



FOR SALE: 2004 Kenworth, W900L 18 speed, wet kit, lift axle, studio sleeper, 630 hp Cat, \$55,000; Call Glenn Larson 406-850-0922 c/o

FOR SALE: 2010 Dakota Grain Trailer, 45' Triple Axel, Roll Tarp, Excellent Condition, \$34,500; Circle, MT; Call Jerry 406-974-2478 c/o

FOR SALE

4 WHEEL DRIVE & TRACK TRACTORS

2013 Case-IH 500HD, PS, 710X42D, PRO 700, 1000 PTO, 500HP, 622HRS \$262,000

2015 JOHN DEERE 9570RT, PS, 36" TKS, 1000 PTO, HI-FLOW HYD, 570HP, 475 HRS \$375,000

1979 STIEGER ST470 III, PS, NEW 30.5X32 DUALS, FULL REBUILD, ALL NEW CENTER PINS, ATOM-JET HYDRAULICS, @ 525 HP \$59,000

2004 BUHLER 2425, 710 DUALS, FULL WGTS, 425 HP, 2050 HRS, 170 HRS ON ENGINE \$99,000

2014 JOHN DEERE 9560R, PS, 520X46 TRIPS, HI-FLOW HYD, 5 SCV'S, 560 HP, 730 HRS \$295,000

2012 JOHN DEERE 9510R, PS, 520X46 TRIPS, HI-FLOW HYD, PTO, 510 HP, 2000 HRS \$215,000

HAY EQUIPMENT

BALE KING 12 WHEEL V RAKE \$24,900

BALE KING 14 WHEEL V RAKE \$29,500

BALE KING BR800 8 BALE RETRIEVER, SINGLE ARM \$31,900

BALE KING 5100TR BALE PROCESSOR, W/40BU. GRAIN TANK \$29,000

GRAIN CARTS

2015 BRENT 1194, 1100 BU, TARP, SCALE \$68,000

2014 BRENT 1196, 1100 BU, TARP, SCALE \$49,000

TRACTORS / LOADER

2014 JOHN DEERE 6125R, MFWD, AQ20, 480X38, H360/GPL, 125 EHP, 140 HRS \$115,000

2014 JOHN DEERE 6190R, MFWD, AQ20, 480X46, H380/GPL, 190 EHP, 245 HRS \$152,000

(6) 2015 JOHN DEERE 6150R, MFWD, AQ 20SP, H360 LDR/GPL, 150 EHP, 650-800 HRS, \$126,000

(1) 2014 JOHN DEERE 6170R, MFWD, AQ 20SP, H380 LDR/GPL, 170 EHP, 300 HRS, \$147,000

2015 JOHN DEERE 6175R, MFWD, AQ 20SP, 380 LDR/GPL, 175 DHP, 1050 HRS, \$145,000

SPRAYERS

2014 JOHN DEERE 4940, 1200 GL, 120 FT, 990 HRS \$260,000

2013 JOHN DEERE 4940, 1200 GL, 120 FT, 670 HRS \$255,000

2014 JOHN DEERE 4830, 1000 GL, 100 FT, 270 HRS \$244,000

2013 JOHN DEERE 4830, 1000 GL, 100 FT, 780 HRS \$217,000

2015 JOHN DEERE R4045, 1200 GL, 120 FT, 420X50, 620 HRS \$325,000

2014 JOHN DEERE LR4038, 1000 GL, 100 FT, 380X46, 210 HRS \$269,000

2012 JOHN DEERE 4830, 1000 GL, 100 FT, 1250 HRS \$165,000

3 TO 5 YEAR LEASES AVAILABLE ON ALL TRACTORS, SPRAYERS AND COMBINES!!

FINANCING: ON APPROVED CREDIT

10% DOWN, 3.85% APR

LARSON & CO., LLC

Glenn A. Larson - 406-850-0922

FOR RENT: Small office space in Wolf Point, \$350 a month; Call 406-650-7040 c/o

FOR SALE: 5' rotary mower, 3 PT., \$650; Call 406-963-2228 9o

FOR SALE: J.D. 400 grinder mixer, needs work; \$750; Call 406-963-2228 9o



Main Street • Wolf Point
Call 653-1410

IN STOCK & READY TO GO
LAWN MOWERS,
ASSORTMENT OF YARD
TOOLS & WEED EATERS



HUGE
INVENTORY OF
FIRE ARMS



FISHING
RODS & REELS



Star Quilts,
Pendleton
& Bead
Work

HUSQVARNA GAS
CONCRETE SAW
ASSORTMENT OF
CHAIN SAWS



A LARGE
ASSORTMENT OF
HAND TOOLS,
SHOP TOOLS, GARAGE TOOLS
& POWER TOOLS



WINDOW AIR
CONDITIONERS



BUY • SELL • CONSIGN • PAWN

Store Hours: Monday-Saturday • 9:00AM-5:30PM





FARM/RANCH, RESIDENTIAL, INVESTMENT, COMMERCIAL, RECREATIONAL

432TJ7 - Gem Views Subdivision Fort Peck, Montana - Lot 4 Henry James Lane, 3.6+/- acres. Residential building lot, water, outdoor fire pit, concrete slab for garage. Just a couple minutes from the Duck Creek boat ramp. Some of the nicest homes in the area are located in this 10 lot subdivision. Restrictive covenants protect your investment for the future. Horse OK **NEW LISTING \$275,000**

415BG7 - 311 Charles St. Nashua - 2,592+/- 3 bdrm., 2 bath home. Many updates including a new kitchen, new wiring throughout, painting, flooring, bathrooms and more! Detached garage & large yard..... **\$180,000**

405KRE7 - Kirkland Ranch Estates Subdivision Lot 89, .50 acres. Located near the Missouri River below Fort Peck Dam in the middle of some of Montana's best hunting and fishing. Build a garage to store your toys & bring your camper. Property is also adjacent to a planned future golf course..... **\$34,000**

497CM7 - 73 Pike Place Rock Creek - 2 story 3,299+/- sq. ft. custom home. 3 bdrm. 3 baths. Some amenities include custom kitchen, quartz counter tops, guest suite above the detached 2 car garage, & landscaped yard w/sprinklers. Dock your boat in the adjacent bay & enjoy the awesome view from the front veranda..... **\$549,000**

496WW7 - 57 Pine Cone Drive- Beautiful 2,366+/- sq. ft. 3 bdrm. 2 1/2 bath home, located in the highly desirable Pines Recreation area at Fort Peck Lake. Well taken care of home along with the great views of Fort Peck Lake and the surrounding area. Deck, hot tub & fire pit area to enjoy yourself or for entertaining. Property includes a double detached garage, storage shed, sprinkler system and so much more!..... **\$439,000**

433UT7- Idlewild Subdivision Fort Peck - .73 Acres Residential building lot # 14. Property boundary is aligned with trees and has community water..... **JUST LISTED - PENDING \$65,000**

424HS7- Duck Creek Subdivision - Freshly updated manufactured 3 bdrm. 2 bath home (including master bath). A great view from the front deck. 30x40 insulated garage for all your toys **A MUST SEE \$259,000**

431RR7- Lot 55 Bass Lane No. Rock Creek - Dry cabin on a lg. lot on the North Fork of Rock Creek. A great lot to build your dream home or cabin on or just use it as a getaway location. Overlooks a protected bay and is within walking distance of a boat ramp **\$135,000**



REALTOR

Deb Henry (Broker) 406-263-2273
Don Elletson (Sales) 406-263-0248
Jarrell Schock (Broker) 406-480-5500



The Mark of Excellence

Office: 406-228-2273 • Fax: 406-228-2644
mrrealty1@gmail.com
www.MissouriRiverRealty.com



GET A JUMP ON SUMMER

Come in now to get your Marine Audio System set up!





Quality, Service, Reliability

54079 US Hwy 2 W., Glasgow, MT 59230
406-228-9840
 (Across From Ezzie's West End)

Also Specializing in: Window Tinting, Stereo Installation, Truck Accessories and Remote Start

FOR SALE

- 6' X 14' Dock
- 4' X 10' Walkway
- Mounting Pipes, Approved for Fort Peck, Treated Lumber

\$1,500

CALL 406-650-7040



STORM WATER CONSTRUCTION, INC. AUCTION

MAY 21, 2016 AT 10:00 A.M. WEST OF HAVRE, MT

647 Road 860 NW off Hwy 2

4 miles west of Havre. Turn north at mm 376. Signs will be posted!

Pat Bibeau will be downsizing and can be contacted at (406) 265-2070 leave message with inquiries. Lots of Equipment and Construction related items. Lunch will be available.



Concrete

- Curling Compound Sprayer
- Concrete Form Pins
- Various sizes: Flat Ties & Snap Ties
- Clean Strip Form Release
- Finish Concrete Tools
- 2' Concrete Form Pins
- 500-1000 Form Wedges
- Concrete Form Blankets
- Wheelbarrow

Skidsteer and Attachments

- 2004 470 Daewoo by Doosan
- Forks
- Grapples
- Buckets
- Snow Backs for Bucket
- Bale Forks
- Rock Bucket

Equipment

- Hay Buster 2650
- Vermeer 605 Super M Baler
- John Deere 5510 Tractor w/540 Loader (needs clutch)
- Baler Twine and Wrap
- 1820 Ditch Witch Trencher w/Extra 4' Chains
- Snow Champ 8/26 Power Propelled Snow Blower
- Hydroseeder - Fire Fighting or Hydroseeding Purposes
- Metal Lathe
- Chop Saw on Mounted Assembly
- DeWalt 200 Psi Portable Compressor
- 20 Ton Hydraulic Press
- 8" Bench Grinder
- Milwaukee Chop Saw
- Craftsman 15G Wheeled Air Tank
- Pro-Tech 16 Speed Floor Drill Press
- 24" High Velocity Drum Fan
- Portable Diesel Power Washer

Seeding Equipment

- Harrows - Small to Large 16'
- John Deere Disc 310 14' Tandem Disc
- John Deere 9350 Seeder - Double Disc

Electrical

- Lighting Fixtures
- Flood Lights
- Electric Conduct Sticks 3/4" & 1"
- Box 110V Flood Lights
- Residential/Commercial Parts and Wiring
- Several Electric Motors

Fencing & Misc.

- Fence Posts & Treated Poles
- Misc. Fencing Materials
- Rolls of Multiple Sized Cable w/attached ends
- 1/2" to 1" Air Hoses
- Garden Hoses
- 1" - 1' Nails
- All sizes Nuts & Bolts
- Vehicle Chains and Tractor Chains
- Tree Root Barrier
- 3 - Steel Stair Sets
- Water/Oil Containers
- Screws - Various Sizes
- Paint & Supplies
- 4" PVC 45 - 90 Deg Connectors, T's etc.
- 8" & Smaller PVC Sticks
- Roofing Materials
- Scaffolding 2' - 5'

Containers

- 3 - 9' x 48' Domestic Containers
- 1 - 8' x 40' Steel Ocean Container
- 25' Circle D Gooseneck
- 32' Delta Triple Axle
- 18' Homemade
- 20' Econoline Tiltbed
- 20' Top 3 Gooseneck
- 18' DCT Car Trailer
- 20' DCT Topdeck

Vehicle Add ons

- Headache Racks
- Toolboxes
- 100G Fuel Tank w/pump
- Homemade A Frame w/ 2 Ton Chain Fall
- Tires/Rims. Spares
- Various Dodge Pickup Parts
- Beacons

Household/ Office Furniture and Supplies

- Kenmore Dryer
- Microwaves
- 40G Ice Machine
- Printers/Fax Machines
- Desks & Desk Chairs
- File Cabinets - Lrg & Sm

The Auction will be held inside a heated shop, rain or shine!



Trailers



Many more items not listed....



Skidsteer Attachments



Fencing Supplies



CLIFF RUSTAD, Auctioneer

406-654-1772 Home or 406-654-4053 Cell

BONDED & INSURED

Sale day takes precedent over advertising error. Not responsible for accidents.
 TERMS; Cash, Check, Certified Check with proper identification or letter of credit.
 No items will be removed until they are paid for.

The Honda Spring Savings Event

ACT NOW! SAVINGS EVENT & EXTENDED WARRANTY ENDS 5/31!

HONDA
Power
Equipment

Very Smart.

Cut Yard Work Down To Size.

SAVE UP TO
\$100

Plus receive One Additional Year to Standard Warranties on all new Honda HRX, HRR & HRS models, March 1 - May 31.[†]

Check Out The New
Honda Select Drive™
Transmission control,
comfort & convenience!
On Select HRX models.

5 YEAR + 1 YEAR
REGULAR EXTENDED
6 YEAR[†]
Manufacturer's Warranty!
Through May 31

NeXite
LIFETIME
Deck Warranty

HRX217K5VYA

- Honda Exclusive Select Drive™ Speed Control System
- 4-in-1 Versamow System with Clip Director® – mulch, bag, discharge or leaf shred with no tools required!
- Roto-Stop® Blade Stop System – Stops the blade, not the engine!
- MicroCut® Twin Blades with four cutting surfaces
- Honda's Premium Residential GCV190cc Engine
- Limited Lifetime NeXite® Deck Warranty

SAVE \$100

\$699* YOUR PRICE
SUGGESTED RETAIL \$799**

HONDA
ONE YEAR
EXTENDED
WARRANTY
EVENT

Special
Financing
Available
Subject to credit approval. Ask for details.

SAVE \$80

\$399* YOUR PRICE
SUGGESTED RETAIL \$479**

SAVE \$80

\$499* YOUR PRICE
SUGGESTED RETAIL \$579**

SAVE \$80

\$499* YOUR PRICE
SUGGESTED RETAIL \$579**

3 YEAR
REGULAR
+ 1 YEAR
EXTENDED
4 YEAR[†]
Manufacturer's Warranty!
Through May 31

3 YEAR
REGULAR
+ 1 YEAR
EXTENDED
4 YEAR[†]
Manufacturer's Warranty!
Through May 31

3 YEAR
REGULAR
+ 1 YEAR
EXTENDED
4 YEAR[†]
Manufacturer's Warranty!
Through May 31

HRR216K9VKA

- MicroCut® Twin Blade System for superior mulching and bagging
- Adjustable Smart Drive provides variable speed control under all mowing conditions
- 3-in-1 System with Clip Director® for mulching, bagging or discharging versatility
- Honda's Premium Residential GCV160cc Engine

HRR216K9VYA

- Roto-Stop® Blade Stop System – Stops the blade, not the engine!
- MicroCut® Twin Blade System for superior mulching and bagging
- Adjustable Smart Drive provides variable speed control under all mowing conditions
- Honda's Premium Residential GCV160cc Engine

HRR216K9VLA

- Electric Start with automotive-style key start!
- MicroCut® Twin Blade System for superior mulching and bagging
- Adjustable Smart Drive provides variable speed control under all mowing conditions
- Honda's Premium Residential GCV160cc Engine

*Minimum Advertised Price. **Manufacturer's Suggested Retail Price. †The Honda One Year Extended Warranty Event offer is good on all Honda HRS, HRR and HRX Series purchased March 1st through May 31st, 2016. See your Authorized Honda Power Equipment Dealer for full details.

Please read the owner's manual before operating your Honda Power Equipment and never use in a closed or partly enclosed area where you could be exposed to odorless, poisonous carbon monoxide. Connection of a generator to house power requires a transfer device to avoid possible injury to power company personnel. Consult a qualified electrician. ©2016 American Honda Motor Co., Inc.

HONDA
Power
Equipment

SPRING
HONDA
CLEARANCE SALE!

15%

ON 2015
HOLDOVER ITEMS*

*SEE DEALER FOR SELECT ITEMS



GENERATORS
TILLERS
WALK BEHIND LAWN MOWERS
TRIMMERS
PUMPS



SAVE \$150.95

\$999* YOUR PRICE
SUGGESTED RETAIL \$1149.95**

EU2000i

- 2000 watts max. (16.7 A) of Honda Inverter 120 AC Power
- Super quiet - 53 to 59 dB(A)
- Lightweight (less than 47 lbs.)
- Parallel with another EU2000i for additional power
- 3 Year Honda Warranty

SAVE \$180.95

\$1099* YOUR PRICE
SUGGESTED RETAIL \$1279.95**

EU2000i Companion

- 2000 watts max. (16.7 A) of Honda Inverter 120 AC Power
- 30A Receptacle allows easy hook up to RV with optional connector
- Parallel with another EU2000i for additional power
- 3 Year Honda Warranty

Power You Can Trust.
SAVE up to \$500!



SAVE \$200.95

\$1499* YOUR PRICE
SUGGESTED RETAIL \$1699.95**

EG4000CL

- 4000 watts max. (33.3/16.7A) 120/240V
- Honda-exclusive DAVR (Digital Auto Voltage Regulation)
- Honda GX270 commercial engine
- Protected by Honda Oil Alert®
- 125V GFCI Outlet Protection
- 3 Year Honda Warranty



SAVE \$330.95

\$1999* YOUR PRICE
SUGGESTED RETAIL \$2329.95**

EU3000is

- 3000 watts max. (25 A) of Honda Inverter 120V AC Power
- Convenient electric start
- Eco-Throttle – Runs up to 20 Hr on 3.4 Gals of Fuel
- 12v - 12A DC output
- Power for RV's including 13,500 BTU AC and basic home backup power
- 3 Year Honda Warranty



SAVE \$500.95

\$3999* YOUR PRICE
SUGGESTED RETAIL \$4499.95**

EU7000is

- 7000 Watts max (58.3/29.1 A) 120/240V of Honda Inverter Power
- Fuel Injected Honda Commercial Grade Engine – No Carburetor!
- Push Button Electric Starting
- Perfect for RV's and Home Backup Power
- 3 Year Honda Warranty

Visit us online at honda.com

Honda POWER EVENT SAVE up to \$500!

FES FARM EQUIPMENT SALES
Serving you since 1964

In Glasgow see Derrick, Scott or Mike
54272 HWY 2 East
Glasgow, MT. 59230
1-406-228-2496

In Plentywood see Bob, Darwin or Katrina
804 East 1st Ave.
Plentywood, MT. 59254
1-406-765-1531

In Culbertson see Todd or Kyle
21 West 2nd St.
Culbertson, MT. 59218
1-406-787-6201

In Circle see Justin or Kyle K
Hwy 200 East
Circle, MT. 59215
1-406-485-2145

ROUND BALER | John Deere



2015 John Deere 569 surface wrap, 1000 PTO, hydraulic pickup lift, bale push bar, 21.5L-16.1 tires. #21185. (1) **\$47,000**

2015 John Deere 569 surface wrap, 1000 PTO, hydraulic pickup lift, bale push bar, 21.5L-16.1 tires. #21189. (1)..... **\$47,000**

2014 John Deere 569 Megawide pickup, twine & surface wrap, 1000 PTO, bale push bar, 21.5L-16.1 10 ply tires. #16006995 (1)..... **\$46,500**

2014 John Deere 569 Megawide pickup, twine & surface wrap, 1000 PTO, bale push bar, 21.5L-16.1 10 ply tires. #16006994. (1)..... **\$46,500**

2014 John Deere 569 surface wrap, 1000 PTO, hydraulic pickup lift, bale push bar, 3000 bales. #21188. (3)..... **\$43,500**

2013 John Deere 569 "Premium round" baler, megawide pickup, surface wrap, 1000 PTO, bale push bar, hydraulic pickup lift, 21.5L-16.1 tires. #16006961. (3) **\$45,000**

2013 John Deere 569 surface wrap, 1000 PTO, Megawide pickup with hydraulic lift, 21.5x16.1 tires, 3860 bales. #17510. (3)..... **\$42,900**

2013 John Deere 569 Megawide pickup, twine & surface wrap, 1000 PTO, bale push bar, 21.5L-16.1 10 ply tires, hydraulic pickup lift. #16006992. (1)..... **\$41,000**

2013 John Deere 569 Megawide pickup, twine & surface wrap, 1000 PTO, bale push bar, 21.5L-16.1 10 ply tires, hydraulic pickup lift, approximately 12,000 bales. #21332 (3)..... **\$34,000**

2013 John Deere 569, Megawide pickup, twine & surface wrap, 1000 PTO, bale push bar, 21.5L-16.1 10 ply tires, hydraulic pickup lift, approximately 12,000 bales. #21333 (3) **\$34,000**

2012 John Deere 568 1 3/8" 1000 RPM hookup, 10 ply tires, Megawide Plus pickup, push bar, cover-surface wrap, hydraulic pickup lift. #21404. (1)..... **\$29,500**

2010 John Deere 568 Megawide pickup, twine/surface wrap, 1000 PTO, hydraulic pickup lift, 21.5L-16.1 10 ply tires, slip clutch alert & speed sensor, bale push bar. #16006844. (4) **\$34,000**

2009 John Deere 568 twine & surface wrap, Megawide pickup with hydraulic lift, 1000 PTO, bale push bar, 10,725 bales. #21037. (4)..... **\$31,000**

John Deere 568 Megawide pickup with hydraulic lift and dual gauge wheels, 1000 PTO, surface wrap, bale push bar, 21.5x16.1 tires, 13,566 bales. #17503. (1)..... **\$29,500**

2007 John Deere 568 Megawide pickup, twine & surface wrap, 1000 PTO, bale push bar, 21.5L-16.1 10-ply tires, hydraulic pickup lift, Bale Trak Pro monitor, pickup gauge wheels. #16006985. (4) **\$29,500**

2007 John Deere 568 Megawide pickup, twine & surface wrap, 1000 PTO, bale push bar, 21.5L-16.1 10 ply tires, hydraulic pickup lift. #16006996. (1)..... **\$27,000**

2007 John Deere 568 Megawide pickup, twine/surface wrap, 1000 PTO, 31x13.5 8 PR, hydraulic pickup lift, slip clutch alert & speed sensor, bale push bar. #16006845. (4) **\$28,000**

John Deere 568 twine & surface wrap, Megawide pickup with hydraulic lift, 1000 PTO, bale push bar, 21.5L-16.1 tires. #17500. (1) **\$19,500**

2007 John Deere 567 Megawide pickup with hydraulic pickup & gauge wheels, twine & surface wrap, 1000 PTO, bale push bar, 31-13.5x15 tires. #16204. (4) **\$22,500**

2001 John Deere 567 twine/surface wrap, 1000 PTO, Megawide Plus pickup, push bar, hydraulic pickup lift. #16006827. (3)..... **\$18,500**

2001 John Deere 567 Megawide pickup with hydraulic lift, twine & surface wrap, 1000 PTO, bale push bar, chain oiler. #17512. (1)..**\$16,000**

2000 John Deere 567 regular pickup with hydraulic lift & gauge wheels, twine & surface wrap, 1000 PTO, bale push bar, 10,000 bales. #21153. (4)..... **\$13,500**

MASSEY-FERGUSON

2013 Massey-Ferguson 2856 Megawide pickup, twine & surface wrap, 1000 PTO, GTA console, bale kicker, 21.5L-16.1 tires. #21403. (1) **\$26,500**

VERMEER

2005 Vermeer 605M 21.5L-16.1 tires, hydraulic bale ramp, net wrap. #21406. (1)..... **\$12,500**

CASE IH

1996 Case IH 8465 regular pickup, twine, 540 PTO, push bar, new monitor. #16006972. (4) .. **Only \$3,500 FOB Circle**



Morris 1400 round bale mover, carries (14) 5-ft.x6-ft. bales. #16006848. (1)..... **\$22,500**

SWATHER



2013 MacDon M155 cab, air conditioning, 16-ft. auger header, steel conditioner, 25-ft. D65 draper header, 320 engine hours, 250 cutting hours. #21110. (1)..... **\$137,500**

2008 MacDon M200 16-ft. R80 rotary disc header, conditioner, Cat 6.6L 213 hp engine, 1950 hours. #21408. (1)..... **\$85,000**



1998 MacDon 9300 with MacDon 920 16-ft. header, steel on steel conditioner rolls. #16006969. (1)..... **\$39,000**

2003 Hesston 8250S self-propelled with 16-ft. auger head & 22-ft. draper head, steel conditioner. #21350 (3)..... **\$42,500**



1989 Case IH 6500 15-ft. and 30-ft draper header. #17511. (4) **\$13,500**



1999 John Deere 1600A 16-ft. MoCo, 1000 PTO. #17513. (1) **\$8,500**

2001 Hesston 1275 16-ft. mower conditioner, steel conditioners, 1000 PTO. #16006976. (1)..... **\$9,500**

2014 John Deere conditioner with feed kit for 425D MacDon draper header. #16009948. (1)..... **\$16,500**

Check Out Our WEBSITE:

www.fesmt.com

CONSUMER PRODUCTS | NEW GATORS



2015 John Deere RSX850i power steering, green & yellow, sport package, 14" Bighorn wheels, sport bucket seats, Fox 2.0 performance shocks, prerunner bumper. #8674. (1).
Was \$19,650 Now \$16,950

2015 John Deere RXS825i S4 4 seater, power steering, 14" Bighorn tires, bench seating, deluxe cargo box, heavy duty brush guard. #8837. (1).
Was \$21,175 Now \$18,575

2015 John Deere RXS825i power steering, green & yellow, 14" Bighorn tires, bench seat, deluxe cargo box, OPS with doors & roof. #8869. (3).
Was \$20,975 Now \$18,375

2015 John Deere RXS825i power steering, green & yellow, 14" Bighorn tires, bench seat, deluxe cargo box, doors, roof. #8781. (4).
Was \$20,450 Now \$17,950

2015 John Deere XUV 550 green & yellow, 12" Maxxis Bighorn tires, standard bench seat, manual lift box. #8675. (1).
Was \$12,175 Now \$10,525

SIDE BY SIDE

2011 John Deere 825i green & yellow gator, 14" Bighorn tires, hi performance sport, deluxe cargo box, power & protection package, rear protection package, brake & taillights, poly liner. #21317 (1)..... **\$9,500**



2012 John Deere RSX850i green sport gator, 14" Maxxis Bighorn tires, bucket sport seat, sports package. #16007575..... **\$12,995**



2012 John Deere RSX825i camo gator, 12" tires, benchseat, deluxe cargo box. #16007529. (3).
WAS \$9,150 THEN \$8,150 NOW \$6,950

2008 John Deere 850D gator, 4WD, diesel, extreme terrain tires, deluxe light kit, horn kit, front fender kit, deluxe outdoor package. #16589 (1) **\$7,950**

LAWN AND GARDEN



2008 John Deere Z445 zero turn mower, 25 hp, 48" mowing deck. #16657. (1) **\$2,125**

2012 John Deere Z425 mower, 48" deck, power flow bagger. #16654. (3) **\$2,400**

2013 John Deere X300R lawn tractor, 18.5 hp, 42" mower deck, rear mounted 7 bushel grass catcher. #16639 (1) **\$2,995**

2011 John Deere X300 lawn tractor, 18.5 hp, hydro, 42" mower deck. #16640 (3) **\$1,895**

2011 John Deere D140 mower, hydro, gas, 2WD, 48" deck. #16677 (4) **\$995**

1996 John Deere 325 lawn tractor, 2 wheel steer, 54" deck. #21108 (4).... **\$1,295**

1982 John Deere 317 lawn tractor, 47" deck, 33" tiller. #21313 (4)..... **\$650**

2012 John Deere X540 lawn tractor, hydro transmission, 2WD, gas, 54" deck. #21232 (3) **\$2,995**



2010 John Deere X540 lawn tractor, 25 hp, hydro, 2WD, 54" deck. #16648 (1) **\$4,500**

2009 John Deere X320 lawn tractor, 22 hp, hydro, 48" mower deck. #16649 (3) **\$1,995**

2007 John Deere X320 lawn tractor, 22 hp, hydro, 48" mower deck. #16547 (4) **\$1,975**

2014 John Deere X304 mower, 18.5 hp, 42" deck, 54 hours. #16660 (1) **\$3,225**

2008 John Deere X304 Kawasaki 17 hp engine, automatic transmission, 42" edge Xtra deck, 4 wheel steer. #21482. (1) **\$1,985**

FES FARM EQUIPMENT SALES

Serving you since 1964

406-228-2496 or
800-428-2496 Glasgow, MT (1)
406-765-1531 or
800-443-9447 Plentywood, MT (2)
406-485-2145 or
800-521-5800 Circle, MT (4)
406-787-6201 Culbertson, MT (3)

Check out our website: www.fesmt.com

AFTER HOURS SALES:

GLASGOW: Mike Johnson, Salesman **406-263-2501**;
 Rob Campbell, Salesman, **406-942-0543**;
 Wade Engstrom AMS/Commercial
 Sprayer Specialist, **406-263-2498**;
 Coel Slutheit, **406-263-2494**

CIRCLE: Mike Haynie, Salesman, **406-939-5994**;
 Ole Rolandson, Salesman, **406-974-2144**;
 Don Waner, Salesman, **406-230-1059**

CULBERTSON: Mike Kjos, **406-489-7277**;
 Luke Anderson, Salesman, **406-478-3118**

Northern Prairie Auto Sales

CHRYSLER DODGE // Jeep RAM

Trusted Brands From A Dealer Who Values Top Service

RAM COMMERCIAL TRUCK SEASON

**OVER \$6000
EXTRA SAVINGS
ON SELECT
2016 RAM 1500S**

**DRIVE
AND DISCOVER**

0% FINANCING
60 mo on RAM 1500s
36 mo on RAM 2500s

**Download our
App FREE**
Available on the
App Store
ANDROID APP ON
Google play

2016 RAM 2500 Longhorn Mega Cab

NEW

**0%/36 mo. or
up to \$5000
in rebates**



6.4 Hemi, leather, block heater, Black/Gold

2016 RAM 1500 ST Crew

NEW

**0%/36 mo. or
up to \$4500
in rebates**



5.7 Hemi, back up cam, tow package, Granite

2016 Town & Country Touring

NEW

MSRP \$38,830

**DRIVE AWAY PRICE
\$35,330***



Leather, block heater, Deep Cherry

2016 Town & Country Touring

NEW

MSRP \$38,830

**DRIVE AWAY PRICE
\$35,330***



Leather, block heater, floor mats, Bright White

2016 RAM 3500 Laramie

NEW

**0%/36 mo. or
up to \$3500
in rebates**



6.7 Diesel, remote, LED bed lighting, Brown

2016 RAM 1500 ECO Diesel Limited

NEW

**0%/60 mo. or
up to \$4000
in rebates**



Sunroof, trailer tow, leather, Granite

2016 RAM 2500 Laramie Mega Cab

NEW

**0%/36 mo. or
up to \$3500
in rebates**



Diesel, leather, remote, cab lights, Black

2016 RAM 1500 Bighorn

NEW

**0%/60 mo. or
up to \$6250
in rebates**

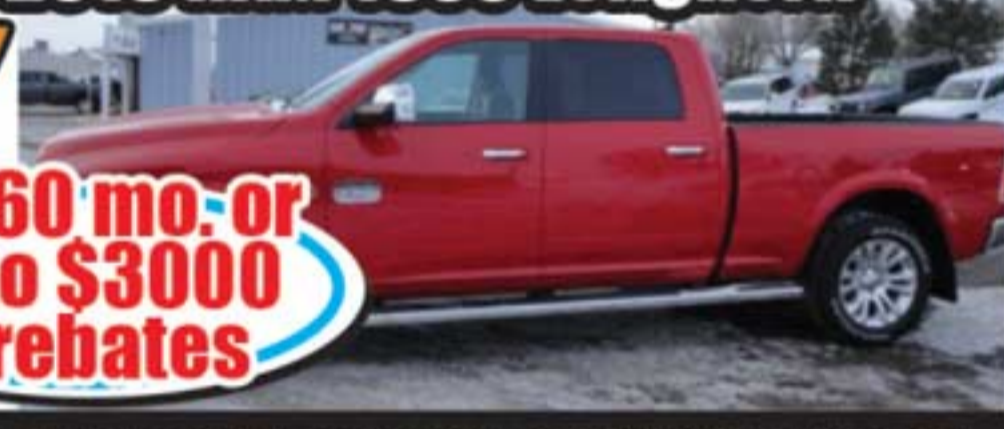


5.7 Hemi, 32 gal tank, anti-spin, Red

2016 RAM 1500 Longhorn

NEW

**0%/60 mo. or
up to \$3000
in rebates**



5.7 Hemi, sunroof, LOADED, Bright Red

*Drive Away Price reflects applicable manufacturer Capital/trade/rebates. Listed prices are subject to change without notification. Drive Away Price includes customer cash for qualifying buyers only. Not all vehicles equipped the same. Rebates depend on model and approved credit. See dealer for details. Call for special rebate /APR Combos, not all apply. Incentives expire 05/31/2016.

Call Jack Nelson, Terry Fast or Jason Partridge today!

www.northernprairieauto.com

100 Hwy 2 East, Wolf Point, MT 59201 • (406)653-1160
Monday through Friday 8am-5pm • Saturday 8am-12pm

CHRYSLER DODGE // Northern Prairie Auto Sales RAM Jeep
100 Hwy 2 East, Wolf Point MT 59201 • (406)653-1160 • www.northernprairieauto.com



CERTIFIED PRE-OWNED



2016 Chrysler 300C AWD

3.6 V6, leather, full glass top, remote, nav, 12K, Granite



**SAVE OVER \$4500 OFF MSRP
PRICED BELOW BOOK.....\$37,500**

2016 Dodge Journey SXT

AWD, black cloth interior, Flex Seating Group, 3 rows, 14K, Black
**SAVE OVER \$3400 OFF MSRP
PRICED BELOW BOOK.....\$26,800**

2014 RAM 1500 Laramie

5.7 Hemi, bucket seats, remote, trailer tow and mirrors, Brown
**SAVE OVER \$2750 OFF MSRP
PRICED BELOW BOOK.....\$33,750**

2015 RAM 1500 Bighorn

5.7 Hemi, 8-spd, back up cam, cloth, 21K, clean! Flame Red
**SAVE OVER \$2000 OFF MSRP
PRICED BELOW BOOK.....\$35,000**

2013 RAM 2500 Laramie

6.4, sunroof, remote, nav, 47K, heated/vented leather, very clean! Granite
SAVE OVER \$4200 OFF MSRP! PRICED BELOW BOOK \$36,750

2014 RAM 3500 Laramie

Diesel, leather, remote, single wheel bail bed feed pickup, 55K, White
SAVE OVER \$3700 OFF MSRP! PRICED BELOW BOOK \$44,250

2013 RAM 1500 Laramie

5.7 Hemi, nerf bars, leather, 33K, heated steering wheel, one owner Maroon
SAVE OVER \$2700 OFF MSRP! PRICED BELOW BOOK \$34,250



GUIDANCE TERMINALS

Now Is The Perfect Time
To Upgrade!

In Stock...

STX \$2,595 - S-Lite \$895

Also Available...

Outback MAX \$5,995



RUGGED. RELIABLE. SIMPLE.

NEW MOWERS HAVE ARRIVED!

ZERO-TURN YOUR
LIFE AROUND.



NEW Models
Now In Stock

Including:

32" With Steering Wheel, 452cc Toro Motor

50" With Steering Wheel, 24.5 h.p. 708 cc Toro V-Twin

42" With Steering Wheel, 24.5 h.p. Toro 708 cc V-Twin

50" Lever Steering with 23 h.p. Kawasaki V-Twin 726cc

Select Toro Timecutters
\$150 OFF Plus **EXTRA**

1 Year Warranty including May 5th -
Engines & Transmissions May 18th

Spray Season is around the corner! We Have The Equipment & Parts You Need!

F/S Manufacturing Inc. ATV SPRAYERS

3 MODELS IN STOCK

Estate Sprayer

- 60" Spray Boom with 3 Nozzles
- TeeJet Spray Wand
- 13" Turf Tires
- Tru-Kleen Full-Drain Tank
- 23 Gallon Capacity
- 2.2 GPM Pump
- Adjustable Hitch



NEW
DESIGN

ATV Contour Sprayer/Spot Sprayer

- Full-Drain Tank
- TeeJet Nozzles
- Spray Wand and 20' Hose
- 4 GPM Electric Pump
- NOW STANDARD
- Liquid-Filled Gauge and Pressure Regulator
- Master Shut-off Valve (Left/Right Shut-offs at booms)



ATV 50/100 Gallon Skid Sprayers

- Adjustable Swing-Away Control Arm
- Master Shut-off
- Left/Right Shut-off Valves at Booms
- Pressure Regulator & Liquid-Filled Gauge
- Standard TeeJet Components
- Tru-Kleen Tank
- Empties to the Last Drop!
- Tank has molded Anti-Vortex Baffle
- Hose Reel & Spray Wand
- 4 HP Honda with 22.5 GPM Centrifugal Pump
- Boom - 18 Ft. Spray Pattern (20 In. Spacing)



Tru-Kleen™ Recirculating Batch Master

- Features
- 3 Point Recirculating Tru-Kleen Tank with 5.5 HP Honda Engine and 2" Banjo Pump
 - Powers an Entire Loading System
 - Mixes Dry Chemical



Tru-Kleen™ Chemical Injector

- Features
- Injects Chemical into Pump Pressure Line (Installed after Pump)
 - Keeps Pump Free of Chemical
 - Rinses Cones
 - Mixes Dry Chemical



Tru-Kleen™ Chemical Injector

- Features:
- Loads chemical from Totes or Barrels
 - Uses existing transfer pump
 - Mechanical Measuring - No Meters
 - Induction of chemical from jugs
 - Rinses both cones
 - Rinses jugs



AIR BUBBLE JETS

reduce drift and
improve leaf contact

- They reduce the number of very small droplets - these are the ones which cause drift.
- They create pockets of air in the droplets that on contact with the leaf, collapse dispersing the liquid evenly



Clamp-On BUCKET FORKS



3000 lb. capacity
Use your bucket to move pallets, totes -
plus many other uses!!
Only takes seconds put on and take off!

Tru-Kleen™



a quality **TRU-KLEEN** product

SEED TREATERS

5 Gallon 12 Volt or
20 Gallon 110 or 12 Volt

36" PUSH TYPE APPLICATOR



In Stock!

Dandy-Lion Killer

a quality **TRU-KLEEN** product

from F/S Manufacturing



48" Pull-type Applicator

Are you tired of fighting with dandelions or other weeds? Frustrated because you can't use your sprayer without the risk of chemical drift killing your wife's flowers? Then you need a DANDY-LION KILLER from F/S Manufacturing. Its simple, gravity-fed operation makes it an easy, effective and safe tool for anyone to use, regardless of experience. The Dandy-Lion Killer is A NO-DRIFT CHEMICAL APPLICATOR, so even when the wind threatens your weekend spraying, you can still get out there and beat the weeds!



Good Supply on Hand
Banjo Valves, Fittings & Hose In Stock!

EDUCATOR 65 Gallon In Stock!



- Features
- 65 Gallon tank
 - 100-240 flw at 30psi
 - Max discharge - 20ft.
 - Low profile
 - Works with bulk systems
 - Slitting & rinse knife - installed!
 - Agitator/Rinse system
 - Available in 2" or 3" plumbing

Handler II 42 gallon 2" or 3"
NOW IN STOCK

MORE THAN MEETS THEY EYE

Freeform

PLASTIC PRODUCTS
A Division of Bourgault Industries Ltd.

Water Tanks



10% OFF
ALL TANKS
IN STOCK

Low Profile
Generation II Tanks
Stocked are 1620, 2340,
3180 & 3900 Gallon

Vertical Generation II Tanks
Stocked are 1500, 1680 &
2100 Gallon

Heavy Duty Tanks
NOW in Stock
2100, 4400 & 6000 Gallon

- UV8 Protection against algae build up.
- Heavy duty 3" bulkhead fitting
- Can be used for liquid fertilizer



406-487-2216
1-888-255-4790

email: sales@shortlineag.com
website: www.shortlineag.com
Box 1177 • Scobey, Montana 59263

WE STOCK TRAILERS TO FIT ALL YOUR NEEDS!

Stock – Horse – Flatbed – Motorcycle – 4 Wheeler – Cargo

Great Assortment Of Pickup Flat Beds, Lawn Mowers & DR Trimmers



**Duralite Aluminum
Stock Trailer**
25' w/ two Gates, Rear
Slider, Escape Door
\$18,900



**2016 Travalum
Trailer**
7' X 24' Stock
Trailer, 2 gates
\$18,000



**2016 Dump
Trailer with Tarp**
6' 8" X 14'
\$7,495



**1986 Kiefer
Horse Trailer**
7 X 18', New Tires
\$4,900



**2007 Montana
Gooseneck Camper**
34' Long w/ 4 Slides
\$25,000



**2006 Polaris 700
Sportsmen 4-Wheeler**
198 Miles, Winch, Snow Blade,
Aluminum Wheels & Tires, Like New
\$6,500



1994 TRAILS WEST SIERRA

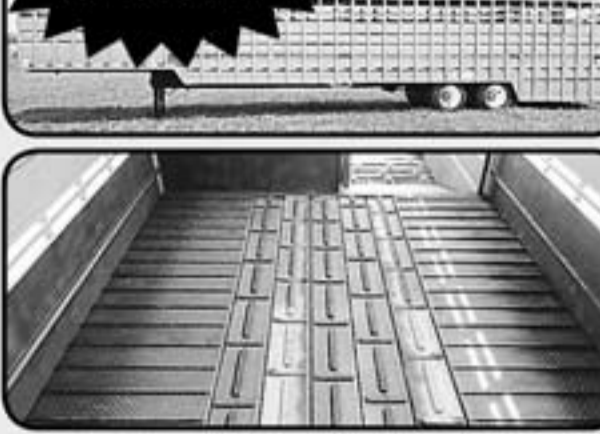
3 Horse Slant \$18,220 • 6' X 10' Large Dressing Room \$800 Mangers \$1,290 • Bay Window in Dressing Room \$200

New Tires

Rear Tack w/swing out rack \$90 • This Trailer is like NEW! Used very Little!

Books at **\$21,500** • Special Pricing **\$9,500**

**In
Stock**



Travalong Groundload Stock Trailer
Massive Size Unmeasurable Quality

\$39,990

**Semi & Trailer
\$57,900**

**IF QUALITY AND DURABILITY IS WHAT YOU WANT, TRAVALONG IS
WHAT YOU NEED.**

Standard Features 5 Year Warranty, Length 48', Width 102", Height 10'4", LED Lights, Main Frame 6" I beam, Solid Center Gates, Panel Tie loops Jacks: 35k Dual, Rear Gate with Slider, Trap Door Clean Outs, Outside Gate Release, 8' Rear Deck, Air Brakes, Rubber Bumper, 1 Dome Light Per Compartment, Dump Valve, 104" Kingpin to Jack Clearance, 22.5K Air Ride Axles, 255/70R22.5H Tires, PPG Automotive Grade Paint, All Deck has Cleated Rubber Floor, Cleated Rubber over Axles, Spray on Gravel Guard on Undercarriage, 14" Step-In Height in Lowered Position, Exterior Gate Releases, 2 Options for 1st Transition from Rear Compartment: Full Swing, No ramp, 1/2 Width Gate, 1/2 Width Aluminum Ramp, Alley Gates



EDDY BAUER SALES

"Home of the Trailer Doctor"

237 Eureka Street • Wolf Point, MT
800-554-1322 or 406-653-1322
406-653-1947 after hours

LIGHTFOOT VETERINARY SERVICES



Kelly C. Lightfoot, DVM

Shawn Davidson, DVM

Scobey, Montana • 783-5201 or 783-7394
Hours - 9:00a.m. to 5:30 p.m.

**MIXED ANIMAL PRACTICE &
WELL-EQUIPPED CLINIC**

Ultrasounding, semen testing, equine surgeries
and dentistry with power float, x-rays, small animal surgeries,
Pet Food, Medical Supplies, Equine Tack, Purina Equine Feed, and Vaccines.



MAINTENANCE FREE AFFORDABLE BRICK SIDING

FOR YOUR HOME OR BUSINESS, REMODEL OR NEW CONSTRUCTION

*Novabrik is a mortarless brick siding material. It interlocks and stacks
together to form a weather tight, maintenance free, and beautiful exterior.*



No Mortar • Easy To Install • Durable • Beautiful Concrete
Brick • Resists Water Penetration • No Maintenance • High
Resistance to Freeze & Thaw Cycles • High Soundproofing
• Can be used in Catastrophe Areas • Variety of Colors to
Choose From • Finished Product is 2 3/4" Thick

RIVERSIDE BRICK YARD

Located at Riverside Storage, Fort Peck, Your Dealer in NE Montana

Visit www.novabrik.com

Call Don in Fort Peck for more info
406-526-3241 Evenings • or 406-263-7207 Days



The Cat Is Out Of The Bag...

The Bargains & the "Happenings" Going On In
N.E. Montana Are in the

FREE TRADER

Check Out The Sales
Auctions, Classifieds Ads &
Community Events
Advertised In This Issue

**Please let these advertisers
know you've seen their ad
in the Free Trader**

Connecting Buyers
& Sellers

For Over
29 Years

To Advertise Your Next Sale
Or Community Event
Call: **406-653-3344**
Fax: **888-624-1925**
Mail: 232 E Johnson St.
Wolf Point, MT 59201
Email: freetrader@nemont.net

FOR SALE



Three bedroom, one bathroom with heated attached and detached garages. One acre of land in the Wolf Point Airport Addition.**\$139,500**

HELLAND AGENCY Contact: Earl Handy
406-228-2114 or 760-954-3301

Congratulations to all the 2016 Graduates!

See our Wide Selection of
Graduation Gifts: Albums, Jewelry Boxes, Microwave Accessories, Laundry Bags and more.
Party Supplies: Plates, Napkins, Thank you notes, Balloons and more.

Bridal Registry

Brianne Grewe
Dustin Brunelle
May 21st - Shower
June 4th - Wedding

Wendy Wilson
Michael Janey
June 18th - Wedding

~We will be CLOSED~ Sun & Mon May 29th & 30th

Have a Safe and Fun Memorial Day Weekend!

Red Barn Gifts

Fort Peck Hwy., Glasgow • 406-228-9256
Store Hours: 10AM - 5:30PM Weekdays • 10AM - 4PM Saturdays



The NEW ProMate EcoMax

THE MOST EFFICIENT WAY TO TREAT HARD WATER

Hard water takes a toll on your home, leaving behind mineral deposits that clog up appliances, create spotty dishes, make skin dry and clothes dull and scratchy.

The ProMate EcoMax reduces the effect these minerals have on your family, your home and your water-using appliances.

- Our highest efficiency model yet
- Uses 30% less water and 40% less salt than competing systems
- Designed for simplicity and durability
- Fewer regeneration cycles means lower energy bills
- Carries an independent product certification from IAPMO

NEW ProMate ecomax

Hellenbrand See water clearly.

YOU CAN BUY, RENT OR LEASE

730 3rd Ave. South • Glasgow, MT • 406-228-2614
Dave Leraas, Owner/Operator • We Service What We Sell!
Monday-Friday 8 a.m. - 5 p.m. • Visit our Website: BigValleyh20.com

NEWTON BUY OF THE MONTH

2013 GMC SIERRA 3500HD SLE



4X4, 6.6L, DURAMAX, ALLISON TRANSMISSION, WHITE, 8 FT. BED, AC, NICE LOCAL TRUCK 73K
ONLY \$39,500

2012 CHEVY 2500 HD LT



4X4, 6.6L, DURAMAX, ALLISON TRANSMISSION, WHITE, LEATHER INTERIOR, 45K
ONLY \$41,500

2004 CHEVY 2500 HD CREW CAB LS



4X4, 6.0L V8, A/T, A/C, MAROON, NICE CLEAN LOCAL TRADE
ONLY \$16,500

NEWTON MOTORS INC.

www.newtonmotors.net



440 W HWY #2 GLASGOW, MONTANA
(Across from the Fairgrounds)
Call Kenny, Terry, Ted, Doug or Andy
800-255-1472 • 406-228-9325
406-228-4381

FOR SALE: 8ft "Knapheide" utility box for installation on single wheel pick up. In very good condition. \$1,995; Call 406-650-7840 c/o

Josh Toews Hay Grinding

Call for Rates & Schedule

Cell: 406-861-4146
Home: 406-525-3746

BURNHAM FENCING

- Barbed Wire Fence
- Pipe & Wood Corrals
- Wind Break, Repairs
- Skid Steer Work



Alex Burnham
Saco, MT
CELL 406.527.7920

FOR SALE: John Deere 700 dirt scraper, Morris 36 foot rod weeder; Call 406-525-3647 10p

FOR RENT: Beautiful Vacation Home on the Missouri River, Idlewild Subdivision, Fort Peck, NEW Riverfront property, Fully furnished; Call Don 406-263-7207 9o

FOR SALE: 1951 Chevrolet with hoist; 1956 Dodge with hoist; 1952 Chevrolet ¾ ton; John Deere Manure Spreader Model L Series 1, 16' tandem wheel stock trailer; Call 406-525-3647 10p

FOR SALE PRIVATE TREATY RED ANGUS BULLS



Quality & Integrity

CALL Brady
406-353-7085

FOR SALE: JD5010 w/5220 engine, runs good, excellent rubber, w Leon loader. \$6,000 OBO; Call 406-263-1439 9p

FOR SALE: 1951 Chevrolet Deluxe, 4 dr., \$4,500; 1968 Chevrolet Monza, 2 dr, hard top, \$6,500; 1996 Chevrolet Corvette, \$8,000; 1982 Honda street bike 200cc, \$500; Call 406-654-5228 leave msg 9o

LOOKING FOR: House Lifting & Rolloffs, PROMPT EXPERIENCE, Competitive Pricing; Call Dale Freitag 406 654-1123 or 406-654-4605 or Dan Liese 406-379-2320 or 406-262-3253 12p

FOR SALE



2006 Interstate Custom Motor Cycle Trailer

7 X 14 Tandem Axle

\$5,995 OBO

CALL 406-650-7040

Run Your Business or Classified Ad Where You'll Get Results...in The Free Trader

COMING MID-JUNE FREE TRADER ONLINE freetradermt.com

We mail FREE to all towns and rural areas from Malta to Bainville, Scobey to Circle.
 We distribute FREE to the towns of Bainville, Culbertson and all points north to the Canadian Border.
 EFFECTIVE ADVERTISING cannot be achieved without reaching the right prospects.
 WHERE you advertise can be as important as what you advertise.
 This publication's PROVEN TRACK RECORD OF 29 YEARS is your key to getting results.
 We SATURATE the market place with our TOTAL MARKET coverage.

New deadline date: at 5pm On Thursday's

MAY	SUN	MON	TUE	WED	THU	FRI	SAT
	1	2	3	4		6	7
	8	9	10	11	12	13	14
	15	16	17	18	19	20	21
20	22	23	24	25	26	27	28
1	29	30	31				
6							

JUNE	SUN	MON	TUE	WED	THU	FRI	SAT
			1	2	3	4	
	5	6	7	8	9	10	11
	12	13	14	15	16	17	18
20	19	20	21	22	23	24	25
1	26	27	28	29	30		
6							

JULY	SUN	MON	TUE	WED	THU	FRI	SAT
						1	2
	3	4	5	6	7	8	9
	10	11	12	13	14	15	16
20	17	18	19	20	21	22	23
1	24	25	26	27	28	29	30
6							

 Deadline Date

 Over 14,000 copies
 Printed with Over
 12,000
 Mailed direct

☒ Best Distribution

☒ Best Value

☒ Best Results

That's the reason our advertisers are

**REPEAT
ADVERTISERS!**

30 words only

\$10⁰⁰ per issue

\$.20 each additional word

Name _____						\$10.00/30 words _____ + 20c/ word over 30 _____ # of Issues Ad is to Run x _____ Total Enclosed _____
Address _____						
City, State, Zip _____						
Phone _____						
One word per box please						
1	2	3	4	5	6	
FOR	SALE					
7	8	9	10	11	12	
13	14	15	16	17	18	
19	20	21	22	23	24	
25	26	27	28	29	30	\$10.00
\$10.20	\$10.40	\$10.60	\$10.80	\$11.00	\$11.20	
\$11.40	\$11.60	\$11.80	\$12.00	\$12.20	\$12.40	

FREE TRADER

Place your ad by:
 Phone: 1-406-653-3344, or
 FAX: 1-888-624-1925 Mail: 232 E Johnson St.
 Wolf Point, MT 59201
 email: freetrader@nemont.net

The FREE TRADER is not responsible for any typographical errors to any ad. We will re-run any/ or part of an ad free of charge with the corrections at our discretion. We will not pay for any ad corrections by any other media

INSTRUCTIONS

- 1) Print name, address, phone # clearly
- 2) Print ad copy: (1 word per box) include phone # with area code (3 words) in ad copy.



**AD DEADLINE
THURSDAY,
MAY 19TH
5 P.M.**

WE'VE EXPANDED

Printing Over 14,000 Copies Every Issue

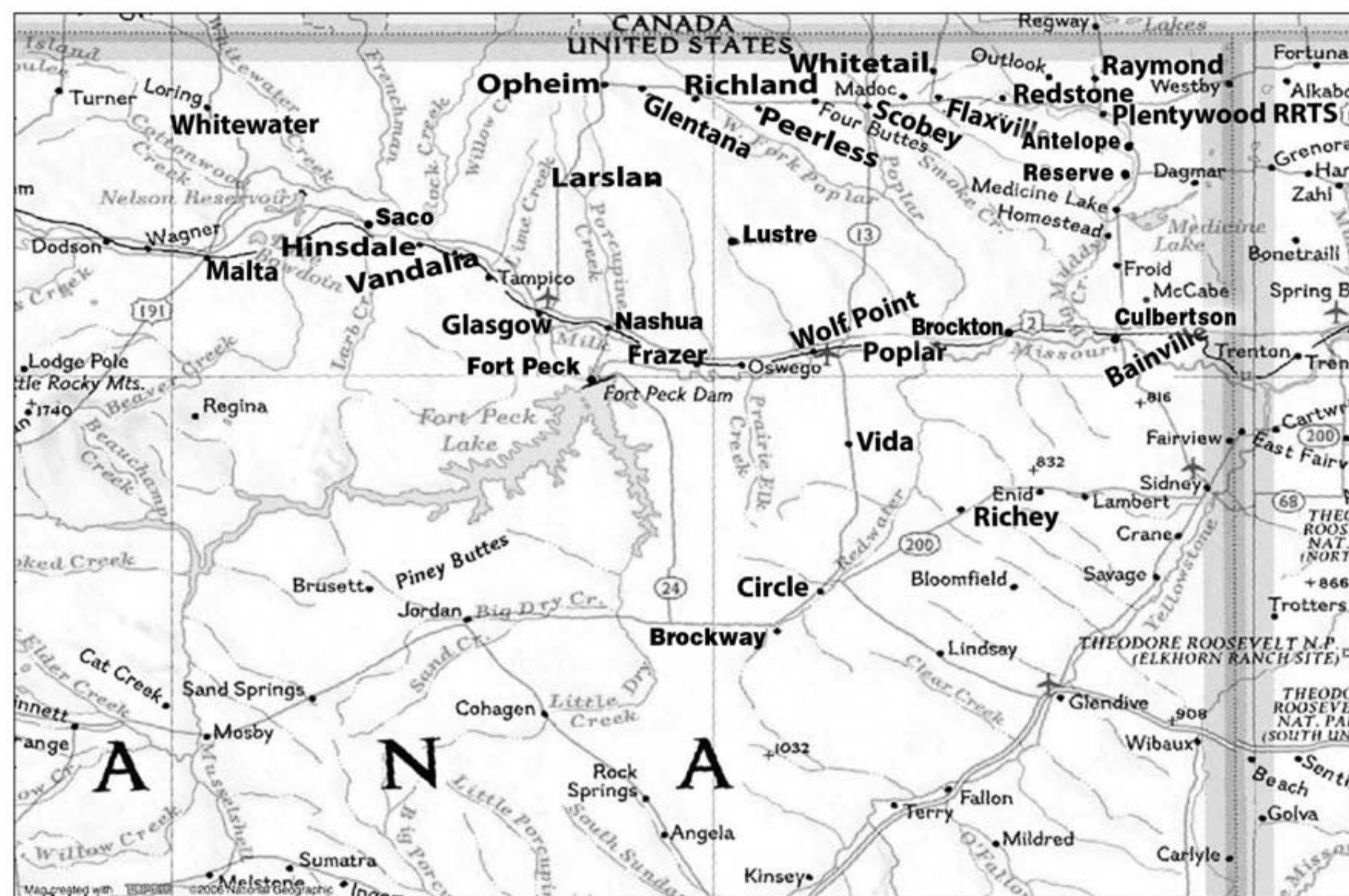
Mailing Direct To Everyone In

Wolf Point	Peerless	Antelope
Frazer	Opheim	Saco
Brockton	Hinsdale	Flaxville
Larlan	St. Marie	Whitewater
Richland	Plentywood	Bainville
Vandalia	RRTS	Culbertson
Whitetail	Scobey	Malta
Circle	Glasgow	Raymond
Vida	Ft. Peck	Redstone
Poplar	Nashua	Richey
		Brockway

If you live in one of these towns
you receive the Free Trader

FREE

In Your Mail Box



Best Distribution



Best Value



Best Results

Counter copies are sent to the Towns of:

Glasgow, Wolf Point, Culbertson, Circle, Bainville, Froid, Medicine Lake, Reserve, Antelope, Plentywood, Raymond, Westby, and Malta

Advertise in the Paper that gets Results!

For over 28 years, We have provided a Sales Tool to Businesses & individuals in the Northeast Montana.

**That's the reason our advertisers are
REPEAT ADVERTISERS!**

We mail **FREE** to all towns and rural areas from Malta to Bainville, Scobey to Circle. We distribute **FREE** to the towns of Glasgow, Bainville, Culbertson and all points north to the Canadian border.

EFFECTIVE ADVERTISING cannot be achieved without reaching the right prospects.

WHERE you advertise can be as important as what you advertise.

This publication's **PROVEN TRACK RECORD OF 29 YEARS** is your key to getting results.

We **SATURATE** the market place with our **TOTAL MARKET** coverage.

FREE TRADER

Place your ad by: Phone: 1-406-653-3344 or FAX: 1-888-624-1925

Mail: 232 E Johnson St., Wolf Point, MT 59201 - email: freetrader@nemont.net

The FREE Trader is not responsible for any typographical error to any ad. We will re-run any / or part of an ad free of charge with the corrections at our discretion. We will not pay for any ad corrections by any other media.

SATURDAY JUNE 11, 2016
DANIEL ALANIZ ESTATE AUCTION
 Gun-Reloading-Ammo-Hunting-Fishing-Camping-Tool
THIS IS AN AWESOME AUCTION THAT
YOU WON'T WANT TO MISS!!
 go to www.glasgowstockyards.com for more information

GSI AUCTION SERVICE



Specializing in
FARM AND RANCH AUCTIONS
EQUIPMENT - ANTIQUES
406-228-9306

P.O. Box 129 - Glasgow, MT
 email: gsi@nemont.net
www.glasgowstockyards.com
 Iva Murch 406-228-9306 or 406-263-7529

Hellenbrand See water clearly.

Drinking Water Systems

Millennium RO

If you're looking for superior filtration to remove inorganic materials like nitrates, arsenic or lead, the Hellenbrand Millennium Reverse Osmosis, our most advanced system is a good fit.



- ◆ Four Stages of enhanced filtration
- ◆ Filters out up to 99% of the contaminants that standard filtrations can leave behind
- ◆ Connects directly to your plumbing

Always Fresh® Drinking Water Systems

If your water tastes or smells bad, the Hellenbrand Always Fresh Drinking Water Filtration System is a simple solution for general point-of-use water filtration issues.



- ◆ Five stages of filtration
- ◆ Removed contaminants like chlorine, MTBEs, volatile organic compounds, lead, giardia and cryptosporidium
- ◆ Provides fresh, tasteless and odorless water from your tap

Big Valley WATER

730 3rd Ave. South • Glasgow, MT
 406-228-2614 • Fax 406-228-2712
 Monday - Friday 8:00 a.m. - 5:00 p.m.
bigvalleywater@nemont.net

FOR SALE: Land Pride 3 PT. grooming mower, 7'6" cut, 540 PTO, been stored inside, \$1,200; Call 406-963-2228 90



VIRGIN 2 YEAR BULLS FOR SALE

For Information Call
 (406) 893-4456 Home • (406) 893-7788 Cell

FARMERS UNION CARRIERS



- **Freight services**
 - Grain/fertilizer Hauling (Available Auger and sweep)
 - Refined fuel/propane (min. 8,500 gal.) - 53' dry van freight (23 ton max)
- **Wholesale tire/tube sales** (customer must provide own tire/tube installations)
 - LT/Passenger/Large and small Ag - Most brands and styles available
- **Semi-truck & trailer service and repair** (Certified Mechanic)
 - Complete repair & diagnostic capabilities - Annual DOT Inspections
 - All makes and models - Laser Alignments
- **Propane services** (Fully CTEP certified technicians)
 - Retail bulk propane deliveries (100 gal min. on call in) - Tank leasing/sales
 - System installations (inside and outside) - Parts and accessories

ALL REPAIR WORK GUARANTEED!

Farmers Union



CALL Neil or Jason **406-487-2660**
 504 Chapman Rd. (East of County Shop), Scobey, MT
 Certified Diesel Mechanics

FAMILY ASSISTANCE IN

PERSONALIZED
FUNERAL SERVICES
CREMATION SERVICES
PRE-PLANNING
MONUMENTS
PET SERVICES

STEVENSON & SONS

SERVICE TO
MONTANA &
NORTH DAKOTA

Fulkerson Stevenson
 218 West Highland Drive
 Williston, ND 58801
 Phone: 701-572-6329
www.fulkersons.com

Clayton Stevenson Memorial Chapel
 102 Custer, Wolf Point, MT 59201
 Phone: (406) 653-2600
www.claytonstevensonchapel.com

Bell Mortuary
 701 2nd Avenue South, Glasgow, MT 59230
 Phone: (406) 228-2112
www.bellmortuarymontana.com

Stevenson & Sons Funeral Home
 702 Lehman Ave, Circle, MT 59215
 Phone: (406) 485-3560
www.stevensonandsons.com

Fulkerson Stevenson
 315 2nd St NW, Sidney, MT 59270
 Phone: (406)-488-2805
www.fulkersons.com

IT'S OUR PRIVILEGE TO SERVE YOU

HONDA
Power
Equipment

NOW IN STOCK



Generators;
Power You
Can Trust!

GENERATORS

EU2000i Companion

- Features**
- 2000 watts, 120V
 - Built in 30A outlet for easy parallel capability with another EU2000i
 - Ideal for TV/DVD, satellite, fridge, coffee pot, and more
 - Great for RV applications
 - Super quiet
 - Inverter - stable power for computers and more



Many
Styles in
Stock

HONDA HRC MOWERS

Features - HRC216K2HXA

- Honda Hydrostatic Drive, Rear Bagger/Mulcher
- Honda Exclusive Shaft Drive (No Belts) • RotoStop® Blade Stop System- Stops the Blade, Not the engine!
- Exclusive Honda MicroCut® Twin Blade System • 21" Heavy Duty Steel Deck is rugged and built to last • Front Bumper Guard and Front Bumper/Tie Down Standard • 8 Cutting Heights
- 1 Year Commercial Warranty (2 Year Engine & Homeowner) • Honda Commercial-Grade GXV160 OHV 4-Stroke • See Dealer for details



Many
Styles in
Stock

HONDA TILLERS

Features- FG110KAT

- Honda Legendary Powerful 4-Stroke Engine • Highly Fuel Efficient and Uses Regular Gas - No Mixing! • Exclusive Patented Honda Hybrid Tines for outstanding tilling and cultivating performance • Exclusive Fastest Time Speed 294 RPM • Folding handle makes storage easy • Exclusive Two Position Wheel Kit, provides for easy transport for smooth or rough terrain is standard • Includes adjustable depth bar • Engine guard and easy carry handle standard • 2 year Homeowner warranty • See Dealer for details

Read the owner's manual before operating Honda Power Equipment.



Being
there
is why
I'm here.

Nathan M Lee, Agent
 98 US Hwy 2 East
 Glasgow, MT 59230
 406-228-4329
nathan.lee.tfti@statefarm.com

Whether you need a question answered, a problem solved, or a claim reported, my job is to make it happen.

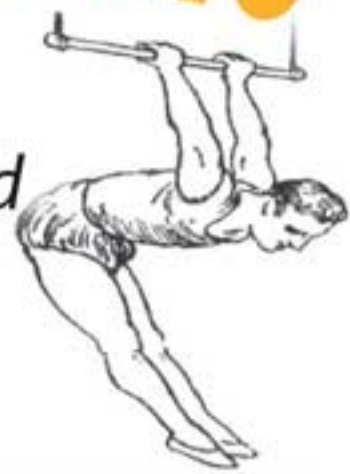
Like a good neighbor,
State Farm is there.®
CALL ME TODAY.



SCOTT'S TRACK N WHEEL 53949 Hwy 2 West • Glasgow
406-228-8151

Yellow Peas For Sale

Certified Trapeze



Trapeze is a high "PERFORMER" in the field

- *Consistent Yielder
- *Early Maturity
- *Excellent Lodging Resistance
- *Pods High
- *Powdery Mildew Resistance



(406) 489-0165 **Skov Seed** (406) 747-5217

FOR SALE: New Boss V-Plow 9' X 2" \$7,000; Contact Don 406-263-7207 9o

FOR SALE: IH 560 gas tractor, wide front, live PTO and hydraulics, good rubber, \$3,500; Call 406-963-2228 9o

LOOKING FOR: House Lifting & Rolloffs, PROMPT EXPERIENCE, Competitive Pricing; Call Dale Freitag 406 654-1123 or 406-654-4605 or Dan Liese 406-379-2320 or 406-262-3253 12p

FOR SALE: 1995 Dodge ¾ Ton 4X4, 1995 Dodge Dakota, 2WD; CALL 406-779-3557 9p

Looking to buy antiques, primitives, vintage. Old cupboards, farm tables, chicken nests, galvanized tubs, good antiques, military. I look at most things, enjoy a farm dig out. Also, can conduct estate, moving, or clean out sales; Patsy 406-785-2321 or 406-263-7936 c/o



Janice Wemmer-Kegley,
Owner
& Stylist
(406) 653-2817

200 Highway
2 East,
Suite G
Wolf Point,
MT 59201



Special Savings!

\$2.19*/Qt.

**NAPA
Conventional
Motor Oil**

Offers Good May 1-31, 2016

Wolf City Auto Inc.

300 4th Avenue North
Wolf Point, MT 59201
406-653-2213



FARM EQUIPMENT SALES



JOHN DEERE

National FFA Scholarships Awarded to Local Students

The National FFA Organization awarded \$2,000 John Deere Company/Farm Equipment Sales, Inc. scholarships to 4 local students. These scholarships are from FES Farm Equipment Sales and John Deere Company through a special project of the National FFA Foundation.



Lukas Johnson
Hinsdale HS FFA.

Lukas plans to use the funds to pursue an Engineering degree at Montana State University- Bozeman.



Sean Williams
Lambert FFA.

Sean plans to use the funds to pursue a Welding degree at the University Of Montana College Of Technology-Missoula.



Samantha Fellman
Culbertson HS FFA.

Samantha plans to use the funds to pursue a Veterinarian degree at Montana State University- Bozeman.



Rachel Prevost
Lambert FFA.

Rachel plans to use the funds to pursue a Farm Broadcasting TV Journalist degree at Carroll College (MT).

National FFA Scholarships Awarded to Local Students

Farm Equipment Sales, Inc., John Deere Company, and the National FFA Foundation have partnered to award \$2,000 college scholarships to 4 Eastern Montana FFA students. Currently, more than 120 sponsors contribute more than \$2.2 million to support scholarships for students. For 31 years, scholarships have been made available through funding secured by the National FFA Foundation. This generous funding comes from individuals, businesses and corporate sponsors to encourage excellence and enable students to pursue their educational goals.

These FES scholarships are 4 of 1,788 scholarships awarded in 2016 through the National FFA Organization. 2016 marks the 32nd year FFA Foundation Scholarships have been made available by the generous partnership donations from individuals, businesses like Farm Equipment Sales, and corporate sponsors like John Deere Company to encourage excellence and enable students to pursue their educational goals in agriculture. 116 sponsors contributed more than \$2.6 million to support FFA scholarships for 1 out of every 5 applicants pursuing degrees in agriculture related fields. The FFA Collegiate Scholarship Program has awarded over \$44 million in scholarships since 1984.

To Apply for the FES FFA Scholarship in 2017

The 2017 scholarship application will be available at www.FFA.org beginning on November 15, 2016, and must be completed by 5:00 P.M. on February 1, 2017. Scholarships are available to students pursuing agriculture related degrees or vocational programs at two-year or four-year colleges and universities. FFA activities, work experience, leadership activities, academic record, and financial need are all considered in scholarship selection. FFA members are eligible to receive one scholarship as a graduating high school senior, and a second scholarship during college.

About National FFA Foundation

The National FFA Foundation builds partnerships with industry, education, government, other foundations and individuals to secure financial resources that recognize FFA member achievements, develop student leaders and support the future of agricultural education. Governed by a 19-member board of trustees comprised of educators, business leaders, individual donors and FFA alumni, the foundation is a separately-registered nonprofit organization. About 82 percent of every dollar received by the foundation supports FFA members and agricultural education opportunities. For more, visit FFA.org/Give.



FARM EQUIPMENT SALES
Serving you since 1964

In Glasgow
54272 HWY 2 East
Glasgow, MT 59230
406-228-2496

In Plentywood
804 East 1st Ave
Plentywood, MT 59254
406-765-1531

In Culbertson
21 West 2nd St.
Culbertson, MT 59218
406-787-6201

In Circle
Hwy 200 East
Circle, MT 59215
406-485-2145



**MONTANA
TRUCK
MONTH**

39 years

Ford- F-Series
**America's Best
Selling Trucks**



Check out our website Today!

FOXFORDWOLFPOINT.COM

OVER 114 NEW, USED, TRUCKS AND TRAILERS ONLINE WITH PICTURES, DESCRIPTIONS AND FACTORY WINDOW STICKERS.

CPO SPECIAL PRICING! 2.9% FINANCING FOR 66 MONTHS**



**2015 FORD F-150
SUPERCREW XLT**
GREAT BUY NEW
ALUMINUM BODY WITH
ONLY 15,443
MILES! - 100,000 MILE
WARRANTY + 2.9% FOR
66 MONTHS**

CPO PRICING \$33,750



**2014 FORD F-150
SUPERCREW LARIAT**
6.5' BOX, 20" WHEELS,
NAVIGATION, SUNROOF,
3.5L ECO-BOOST V6, CPO
CERTIFIED - 100,000 MILE
WARRANTY + 2.9% FOR
66 MONTHS**

CPO PRICING \$37,900



**2014 FORD F-150
SUPERCREW FX4**
6.5' BOX, NAVIGATION,
SUNROOF, 5.0L V8, CPO
CERTIFIED - 100,000 MILE
WARRANTY + 2.9% FOR
66 MONTHS**

CPO PRICING \$38,900

**O.A.C. ON APPROVED CREDIT

CALL FOR SPECIAL SUPER DUTY BLOW OUT PRICING!!! - TOO LOW TO ADVERTISE!!!

NEW VEHICLES



2016 FORD FUSION SE
LEATHER HEATED SEATS,
SE TECH PKG.,
2.0L ECO-BOOST, 33 MPG,
\$\$\$ CALL FOR MAY SPECIAL PRICING \$\$\$



**2016 FORD F-150 LARIAT
CREW CAB**
SHADOW BLACK, W/SPORT PACKAGE
5.0L, REMOTE START, NAVIGATION, 4WD
\$\$\$ CALL FOR MAY SPECIAL PRICING \$\$\$



2016 FORD EXPLORER PLATINUM
HEATED /COOLED LEATHER,
REMOTE START, 4WD, 3.5L,
NAVIGATION, GUARD MET-COLOR
\$\$\$ CALL FOR MAY SPECIAL PRICING \$\$\$



2016 FORD F-350 LARIAT
NAVIGATION, CHROME PKG.,
20" WHEELS, FORD 5TH WHEEL
\$\$\$ CALL FOR MAY SPECIAL PRICING \$\$\$



**2016 FORD EXPEDITION
EL PLATINUM**
NAVIGATION, POWER RUNNING
BOARDS, SUNROOF
\$\$\$ CALL FOR MAY SPECIAL PRICING \$\$\$



**2016 FORD MUSTANG GT
PREMIUM**
MAGNETIC COLOR WITH BLACK ACCENT
PACKAGE, NAVIGATION, AUTO, READY TO ROCK!
\$\$\$ CALL FOR MAY SPECIAL PRICING \$\$\$



2016 FORD F-250 LARIAT CREW
SILVER/MAGNETIC TWO TONE PAINT, 40/20/40 BENCH
SEAT, RUNNING BOARDS, SPRAY-IN BEDLINER, FORD
5TH WHEEL HITCH, LARIAT INT. PKG
\$\$\$ CALL FOR MAY SPECIAL PRICING \$\$\$



**2016 FORD F-150
CREW XLT**
302A PKG., 3.5L ECO-BOOST, FX4 OFF-ROAD
PKGS., REARVIEW CAMERA, REVERSE SENSING
\$\$\$ CALL FOR MAY SPECIAL PRICING \$\$\$

* MSRP MINUS CURRENT FACTORY INCENTIVES

USED VEHICLES AND TRUCKS



2012 FORD ESCAPE
\$14,200
XLT SPORT PACKAGE, PREMIUM CLOTH
INTERIOR, SPECIAL WHEELS, FOUR
WHEEL DRIVE (REALLY!) 74,400 MILES



2011 FORD F-150 KING RANCH
\$26,500
OFF-ROAD PKG.,
6.5' BOX,
67,800 MILES



2011 FORD F-350 LARIAT
NADA RETAIL \$37,300
OUR PRICE \$28,900
6.7L DIESEL, 20" WHEELS, 5TH
WHEEL, 119,000 MILES



2014 FORD F-150 KING RANCH
\$38,900
LOADED, NAVIGATION, 6.5' BOX,
FRONTIER GRILL GUARD,
ACCESS COVER, 34,402 MILES



2010 MERCURY MILAN
\$11,200
LEATHER, 31 MPG
HIGHWAY, ONLY 49,902 MILES,
IN GREAT SHAPE!

20% OFF
ALL BRAKE AND
TRANSMISSION SERVICE WORK

PLUS
Free Wiper Blades for any
Transmission Service.



GET READY FOR
SUMMER
SERVICE SPECIALS!

\$39.99

WORKS SPECIAL

Includes: Oil Change (5 quarts)
• Tire Rotation • Brake Inspection

SPRING SAVINGS ON TRUCK & TRAILERS!

VISIT US ONLINE. GO TO: FOXFORDWOLFPOINT.COM • VEHICLES, TRUCK & GRAIN TRAILERS INVENTORY

**WATCH FOR MARKDOWNS
ON TRAILERS!**



**2016 NEVILLE
DROP DECK**
53' TRIPLE AXLE,
BEAVERTAIL 3 RAMPS, AIR
RIDE, 60,000 GVWR



**2004 INTERNATIONAL
4000 SERIES CUBE BODY**
24' CUBE VAN, DT466
ENGINE, AUTO,
304,937 MILES



**2016
NEVILLE 42'**
11R25.5 TIRES, AIR RIDE,
ELECTRIC TARP, STEEL,
WHITE



**2016
NEVILLE**
38.5' STEEL MANUAL TARP
AND TRAPS

**2016
NEVILLE 53'**
DROP DECK - 3 AXLES,
BEAVERTAIL, AIR RIDE,
SLIDING WINCHES
\$40,000



**1974 CHEVY
TANDEM**
20FT BOX AND HOIST,
GOOD TIRES, 5&2 TRANS,
427 BIG BLOCK RUN GREAT



**1992 WILSON ALUM
GRAIN TRAILER**
CONVERTS TO DRY HAULER,
GOOD TIRES/BRAKES, POWER
TARP, DOT'D READY TO GO!



**1995 EAST 48' DROP
DECK TRAILER**
STEEL ROD RAIL SYSTEM FOR
TIE DOWNS, GOOD TIRES,
DECK IN GREAT SHAPE!



2004 KENWORTH T800
JUST GONE THROUGH SHOP - RUNNING
GREAT, GOOD BRAKES, GRILL GUARD,
TIRES 50%, C15 CAT 475HP, WET KIT, 13
SPEED, 652,000 MILES

CALL FOR GREAT PRICING!

\$11,000

\$39,900

\$31,900

\$11,500

\$14,500

\$18,500

\$27,900



406-653-1350 • 101 ANACONDA, WOLF POINT, MT

www.foxfordwolfpoint.com • CALL MIKE FOX, PAUL WEMMER or SCOTT KEEN